

CITY OF SURREY

BY-LAW NO. 16031

A By-law to close and to remove the dedication
of a highway of portions of King George Highway.
.....

WHEREAS pursuant to Subsection 40(1)(a) of the *Community Charter*, S.B.C. 2003, c. 26, the Council may, by by-law, close all or part of a highway that is vested in the municipality to all or some types of traffic;

AND WHEREAS pursuant to Section 40(2) of the *Community Charter*, S.B.C. 2003, c. 26, the Council may, by by-law, remove the dedication of a highway that has been closed by a by-law under Subsection 40(1)(a).

NOW THEREFORE the Council of the City of Surrey in open meeting assembled, ENACTS as follows:

1. Those portions of road lying in District Lot 165 Group 2 New Westminster District, shown outlined in heavy black line on a Reference Plan attached hereto, and forming part of this by-law, duly signed by the Mayor and Clerk, prepared by Larry Achtemichuk, B.C.L.S. on the 24th day of May, 2006, and more particularly described as follows:

That portion of road dedicated on Plan 5388, containing 296.5 square metres and called Parcel A,

That portion of road dedicated on Plan 5388, containing 165.6 square metres and called Parcel B,

(hereinafter referred to as those portions of King George Highway)

shall be closed to traffic.

2. The dedication as highway be removed of said portions of King George Highway.
3. This By-law may be cited for all purposes as "Surrey Close and Remove the Dedication of Highway of Portions of King George Highway By-law, 2006, No. 16031".

READ A FIRST, SECOND AND THIRD TIME on the 12th day of June, 2006.

NOTICE OF INTENTION

ADVERTISED on the 17th and 18th day of June and on the 24th and 25th day of June, 2006, in the SURREY LEADER/PEACE ARCH Community newspaper.

RECONSIDERED AND FINALLY ADOPTED, signed by the Mayor and Clerk, and sealed with the Corporate Seal on the 26th day of June, 2006.

_____ MAYOR

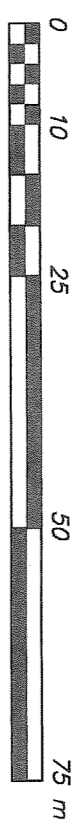
_____ CLERK

Reference Plan to Accompany the City of Surrey Highway Dedication
 Cancellation By-Law No. 16031
 Covering Portions Of Road
 Shown On Plan 5388 All of District Lot 165 Group 2 NWD

Pursuant to Section 120 of the Land Title Act & Section 40 Community Charter

B.C.G.S. 926.017

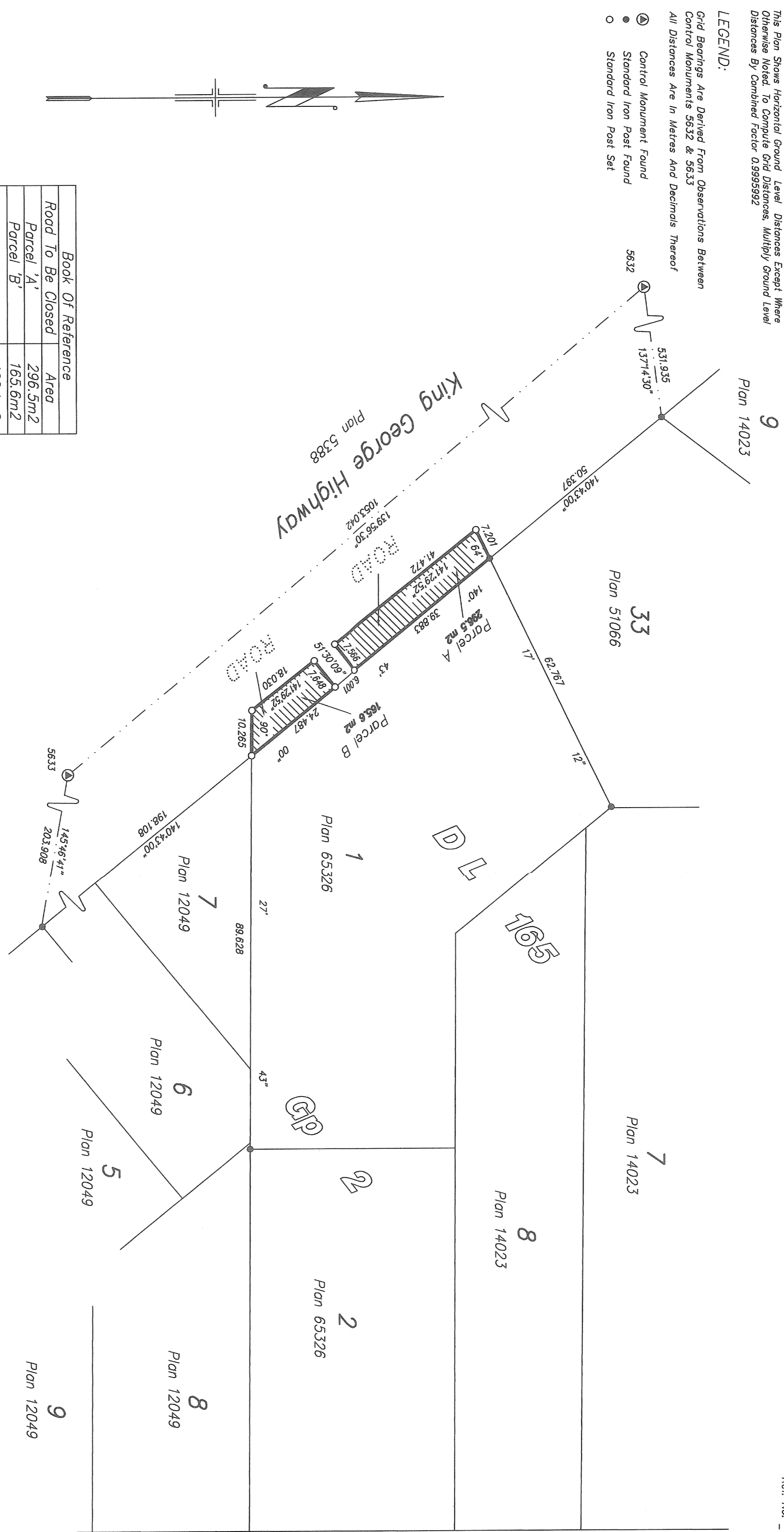
SCALE 1 : 750



This Plan Shows Horizontal Ground Level Distances Except Where
 Otherwise Noted. To Compute Grid Distances, Multiply Ground Level
 Distances By Combined Factor 0.9995992

LEGEND:

- ▲ Grid Bearings Are Derived From Observations Between Control Monuments 5532 & 5633
- All Distances Are In Metres And Decimals Thereof
- Control Monument Found
- Standard Iron Post Found
- Standard Iron Post Set



Book Of Reference	
Road To Be Closed	Area
Parcel 'A'	296.5m ²
Parcel 'B'	165.6m ²
Total Area	462.1m ²

I, Larry Achtentchuk, A British Columbia Land Surveyor,
 Of Surrey, In British Columbia, Certify That I Was
 Present At And Personally Supervised The Survey
 Represented By This Plan, And That The Survey And
 Plan Are Correct. The Field Survey Was Completed On
 The 23 Day Of May 2006. The Plan Was
 Completed And Checked, And The Checklist Filed Under
 # 48867, On The 24th Day Of May 2006.

B.C.L.S.

Deposited In The Land Title Office
 At New Westminster, B.C.
 This _____ Day Of _____

Ref. No. _____
 Registrar _____

Plan BCP ---

City of Surrey

Mayor Dianne Watts

City Clerk Margaret Jones

Witness As To Both Signatures

Print Name: _____

Address: _____

Occupation: _____

148th Street

This Plan Lies Within The Greater Vancouver Regional District

Terra Pacific Land Surveying Ltd

Suite 119 - 19292 - 60th Avenue, Surrey, BC

Tel: 604-533-0954

File: 05-073Ref