

CITY OF SURREY

BY-LAW NO. 16070A

A by-law to amend Surrey Zoning By-law, 1993, No. 12000, as amended
.....

THE CITY COUNCIL of the City of Surrey, in open meeting assembled, ENACTS AS FOLLOWS:

1. Surrey Zoning By-law, 1993, No. 12000, as amended, is hereby further amended, pursuant to the provisions of Section 903 of the Local Government Act, R.S.B.C. 1996 c. 323, as amended by changing the classification of the following parcels of land, presently shown upon the maps designated as the Zoning Maps and marked as Schedule "A" of Surrey Zoning By-law, 1993, No. 12000, as amended as follows:

FROM: ONE-ACRE RESIDENTIAL ZONE (RA) AND
SINGLE FAMILY RESIDENTIAL ZONE (RF)
TO: COMPREHENSIVE DEVELOPMENT ZONE (CD)

Parcel Identifier: 010-105-417

Lot "A" Section 17 Township 1 New Westminster District Plan No. 15499

13487 - 16 Avenue

Portions of 135 Street shown on the Survey Plan attached hereto and forming part of this by-law as Schedule "A", certified correct by John Onderwater and Associates, B.C.L.S. on the 13th day of July 2006 containing 871.7 square metres, called Block A, and 208.7 square metres, called Block B.

(hereinafter referred to as the "*Lands*")

2. The following regulations shall apply to the *Lands*:

A. Intent

This Comprehensive Development Zone is intended for *single family dwellings* on small *suburban* lots.

B. Permitted Uses

The *Lands* and *structures* shall be used for the following uses only, or for a combination of such uses:

1. One *single family dwelling*.

2. *Accessory uses* including the following:
 - (a) *Bed and breakfast* use in accordance with Section B.2, Part 4 General Provisions, of Surrey Zoning By-law, 1993, No. 12000, as amended; and
 - (b) The keeping of *boarders* or *lodgers* in accordance with Section B.2, Part 4 General Provisions, of Surrey Zoning By-law, 1993, No. 12000, as amended.

C. Lot Area

Not applicable to this Zone.

D. Density

1. The maximum unit *density* shall not exceed 6.9 *dwelling units* per hectare [2.8 u.p.a.], calculated on the basis of the entire *Lands*.
2.
 - (a) For the purpose of this Section and notwithstanding the definition of *floor area ratio* in Part 1 Definitions of Surrey Zoning By-law, 1993, No. 12000, as amended, all covered areas used for parking shall be included in the calculation of *floor area ratio* unless the covered parking is located within the *basement*; and
 - (b) For *building* construction within a *lot* the *floor area ratio* shall not exceed 0.32, provided that, of the resulting allowable floor area, 45 square metres [480 sq.ft.] shall be reserved for use only as a garage or carport, and 10 square metres [105 sq.ft.] shall be reserved for use only as *accessory buildings* and *structures*.

E. Lot Coverage

The maximum *lot coverage* shall be 25%.

F. Yards and Setbacks

Buildings and *structures* shall be sited in accordance with the following minimum *setbacks*:

Use	<i>Setback</i>	<i>Front Yard</i>	<i>Rear Yard</i>	<i>Side Yard</i>	<i>Side Yard on Flanking Street</i>
<i>Principal Building</i>		7.5 m. [25 ft.]	7.5 m. [25 ft.]	3.0 m. [10 ft.]	7.5 m. [25 ft.]
<i>Accessory Buildings and Structures Greater Than 10 square metres [105 sq.ft.] in Size</i>		18.0 m. [60 ft.]	1.8 m [6 ft.]	1.0 m [3 ft.]	7.5 m [25 ft.]
<i>Other Accessory Buildings and Structures</i>		18.0 m [60 ft.]	0.0 m	0.0 m.	7.5 m. [25 ft.]

Measurements to be determined as per Part 1 Definitions, of Surrey Zoning By-law, 1993, No. 12000, as amended.

G. Height of Buildings

Measurements to be determined as per Part 1 Definitions of Surrey Zoning By-law, 1993, No. 12000, as amended.

1. *Principal buildings:* The *building height* shall not exceed 9 metres [30 feet].
2. *Accessory buildings and structures:* The *building height* shall not exceed 4 metres [13 feet] except that where the roof slope and construction materials of an *accessory building* are the same as that of the *principal building*, the *building height* of the *accessory building* may be increased to 5 metres [16.5 ft.].

H. Off-Street Parking and Loading/Unloading

1. Resident and visitor *parking spaces* shall be provided as stated in Table C.6 of Part 5 Off-Street Parking and Loading/Unloading of Surrey Zoning By-law, 1993, No. 12000, as amended.
2. Outside parking or storage of *campers*, boats and *vehicles* including cars, trucks and *house trailers* ancillary to the residential use, shall be limited to:
 - (a) A maximum of 2 cars or trucks;

- (b) *House trailer, camper* or boat provided that the combined total shall not exceed 1; and
 - (c) The total amount permitted under (a) and (b) shall not exceed 3.
3. No outside parking or storage of a *house trailer* or boat is permitted within the *front yard setback*, or within the required *side yards* adjacent the *dwelling*, or within 1 metre [3 ft.] of the *side lot line*, except on *lots* which have no vehicular access to the *rear yard* or where access is not feasible through modification of *landscaping* or fencing or both, either 1 *house trailer* or 1 boat may be parked in the front driveway or to the side of the front *driveway* or in the *side yard*, but no closer than 1 metre [3 ft.] to a *side lot line* nor within 1 metre [3 ft.] of the *front lot line* subject to the residential parking requirements stated in Table C.6 of Part 5 Off-Street Parking and Loading/Unloading of Surrey Zoning By-law, 1993, No. 12000, as amended.

I. Landscaping

- 1. All developed portions of the *lot* not covered by *buildings, structures* or paved areas shall be landscaped including the retention of mature trees. This *landscaping* shall be maintained.
- 2. The parking or storage of *house trailers* or boats shall be adequately screened by compact evergreen trees or shrubs at least 1.8 metres [6 ft.] in height and located between the said *house trailer* or boat and any point on the *lot line* within 7.5 metres [25 ft.] of the said *house trailer* or boat, in order to obscure the view from the abutting *lot* or street, except:
 - (a) On a *corner lot*, this required landscape screening shall not be located in an area bounded by the intersecting *lot lines* at a street corner and a straight line joining points 9 metres [30 ft.] along the said *lot lines* from the point of intersection of the 2 *lot lines*;
 - (b) Where the driveway or the parking area is used for parking or storage of a *house trailer* or boat, the landscape screen is not required within the said *driveway*; and
 - (c) In the case of *rear yards*, this screening requirement may be provided by a 1.8 metre [6 ft.] high solid fence.

J. Special Regulations

Not applicable to this Zone.

K. Subdivision

Lots created through subdivision shall conform to the following minimum standards:

	<i>Lot Size</i>	<i>Lot Width</i>	<i>Lot Depth</i>
Subdivision	1,200 sq. m. [12,917 sq.ft.]	30 metres [100 ft.]	30 metres [100 ft.]

Dimensions shall be measured in accordance with Section E.21, Part 4 General Provisions, Surrey Zoning By-law, 1993, No. 12000, as amended.

L. Other Regulations

In addition to all statutes, by-laws, orders, regulations or agreements, the following are applicable, however, in the event that there is a conflict with the provisions in this Comprehensive Development Zone and other provisions in Surrey Zoning By-law, 1993, No. 12000, as amended, the provisions in this Comprehensive Development Zone shall take precedence:

1. Definitions are as set out in Part 1 Definitions, of Surrey Zoning By-law, 1993, No. 12000, as amended.
2. Prior to any use, the *Lands* must be serviced as set out in Part 2 Uses Limited, of Surrey Zoning By-law, 1993, No. 12000, as amended and in accordance with the servicing requirements for the RH Zone as set forth in Surrey Subdivision and Development By-law, 1986, No. 8830, as amended.
3. General provisions are as set out in Part 4 General Provisions, of Surrey Zoning By-law, 1993, No. 12000, as amended.
4. Additional off-street parking requirements are as set out in Part 5 Parking and Loading/Unloading, of Surrey Zoning By-law, 1993, No. 12000, as amended.
5. *Sign* regulations are as set out in Surrey Sign By-law, 1999, No. 13656, as amended.
6. Special *building setbacks* are as set out in Part 7 Special Building Setbacks, of Surrey Zoning By-law, 1993, No. 12000, as amended.
7. *Building* permits shall be subject to the Surrey Building By-law, 1987, No. 9011, as amended, and the Surrey Development Cost Charge By-law, 2002, No. 14650, as amended, and the development cost charges shall be based on the RH Zone.
8. Surrey Tree Preservation By-law, 1996, No. 12880, as amended.

9. Provincial licensing of *child care centres* is regulated by the Community Care Facility Act R.S.B.C. 1996. c. 60, as amended, and the Regulations pursuant thereto including without limitation B.C. Reg 319/89/213.

3. This By-law shall be cited for all purposes as "Surrey Zoning By-law, 1993, No. 12000, Amendment By-law, 2006, No. 16070A."

READ A FIRST AND SECOND TIME on the 24th day of July, 2006.

PUBLIC HEARING HELD thereon on the 11th day of September, 2006.

READ A THIRD TIME ON THE 11th day of September, 2006.

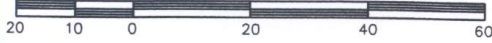
RECONSIDERED AND FINALLY ADOPTED, signed by the Mayor and Clerk, and sealed with the Corporate Seal on the 26th day of June, 2007.

_____ MAYOR

_____ CLERK

**SURVEY PLAN TO ACCOMPANY CITY OF SURREY REZONING BYLAW 1670A
OF PART ROAD DEDICATED BY PLAN 15499,
SECTION 17 TOWNSHIP 1 N.W.D.**

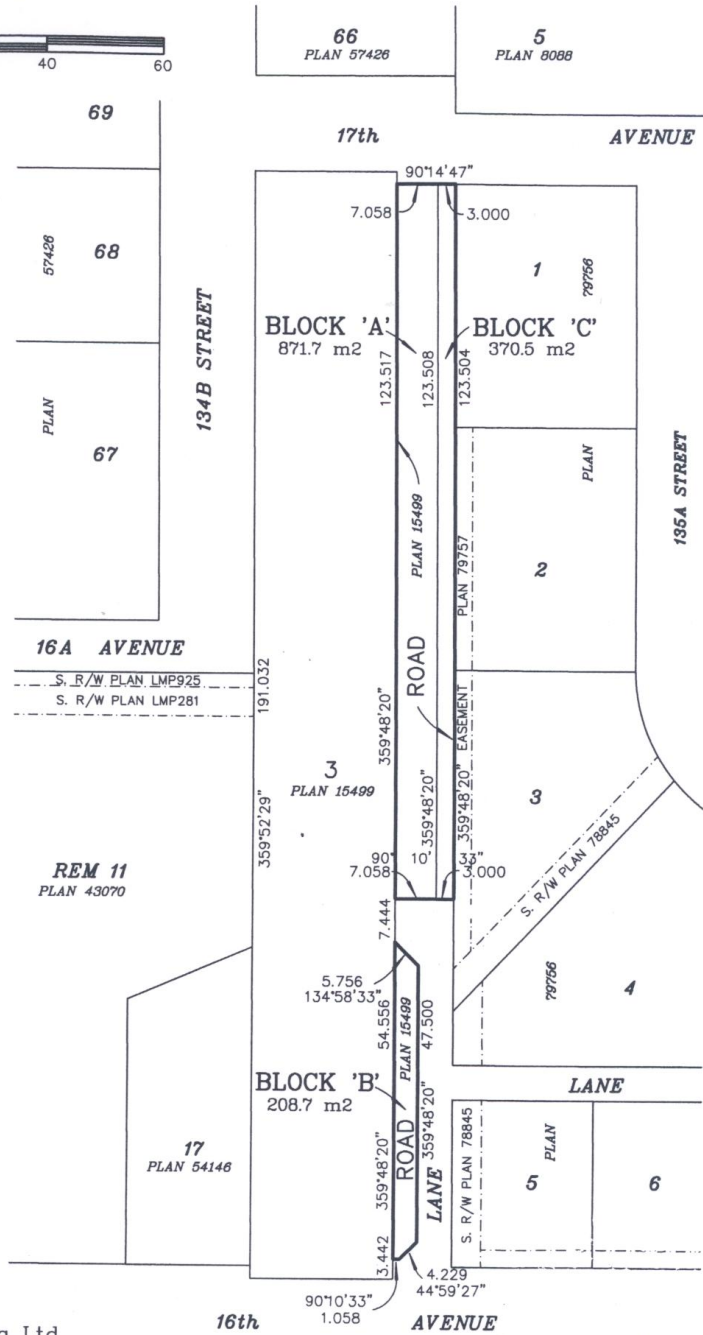
SCALE 1:1000



All Distances are in Metres.

CITY OF SURREY

GRID BEARINGS ARE DERIVED
FROM OCMS 5474 & 5475



SCHEDULE A

Onderwater Land Surveying Ltd.
B.C. Land Surveyors
#104 - 5830 176 'A' STREET
Cloverdale, B.C.
FILE: JS0545_RZ2

*This Plan Lies Within The
Greater Vancouver Regional District*

This plan is certified correct
this 13th day of July, 2006.

© *[Signature]*
B.C.L.S.