

CITY OF SURREY

BY-LAW NO. 16256

A By-law to close and to remove the dedication
of a highway of a portion of Lane.
.....

WHEREAS pursuant to Subsection 40(1)(a) of the *Community Charter*, S.B.C. 2003, c. 26, the Council may, by by-law, close all or part of a highway that is vested in the municipality to all or some types of traffic;

AND WHEREAS pursuant to Section 40(2) of the *Community Charter*, S.B.C. 2003, c. 26, the Council may, by by-law, remove the dedication of a highway that has been closed by a by-law under Subsection 40(1)(a).

NOW THEREFORE the Council of the City of Surrey in open meeting assembled, ENACTS as follows:

1. That portion of road lying in Section 7 Township 8 New Westminster District, shown outlined in heavy black line on a Reference Plan attached hereto, and forming part of this by-law, duly signed by the Mayor and Clerk, prepared by Scott E. Netherton, B.C.L.S. on the 31st day of January, 2007, and more particularly described as follows:

That portion of road dedicated by Plan 2018, called Parcel 'One'
and containing 226.5 square metres,

(hereinafter referred to as that portion of Lane)

shall be closed to traffic.

2. The dedication as highway be removed of said portion of Lane.
3. "Portion of Lane Between 175 Street and 176 Street at the Cloverdale By-Pass Road Exchange By-law, 2000, No. 14009" is hereby repealed.
4. This By-law may be cited for all purposes as "Surrey Close and Remove the Dedication of Highway of a Portion of Lane at Cloverdale Bypass (Hwy. #15) and 58 Avenue By-law, 2007, No. 16256."

READ A FIRST, SECOND AND THIRD TIME on the 12th day of February, 2007.

NOTICE OF INTENTION

ADVERTISED on the 10th day and the 17th day of March, 2007, in the SURREY NOW newspaper.

RECONSIDERED AND FINALLY ADOPTED, signed by the Mayor and Clerk, and sealed with the Corporate Seal on the 2nd day of April, 2007.

_____ MAYOR

_____ CLERK

REFERENCE PLAN TO ACCOMPANY CITY OF SURREY HIGHWAY DEDICATION CANCELLATION
 BYLAW NUMBER 16256 OF A PORTION OF ROAD LYING IN SECTION 7 TOWNSHIP 8
 NEW WESTMINSTER DISTRICT DEDICATED BY PLAN 2018

B.C.G.S. 92G.017

PURSUANT TO SECTION 120, LAND TITLE ACT.

LEGEND

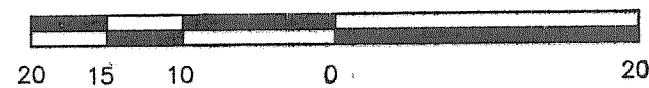
- ⊕ DENOTES CONTROL MONUMENT FOUND
- DENOTES STANDARD IRON POST FOUND
- DENOTES STANDARD IRON POST SET
- (c) DENOTES CALCULATED

INTEGRATED SURVEY AREA NO. 1, SURREY, NAD83 (CSRS)

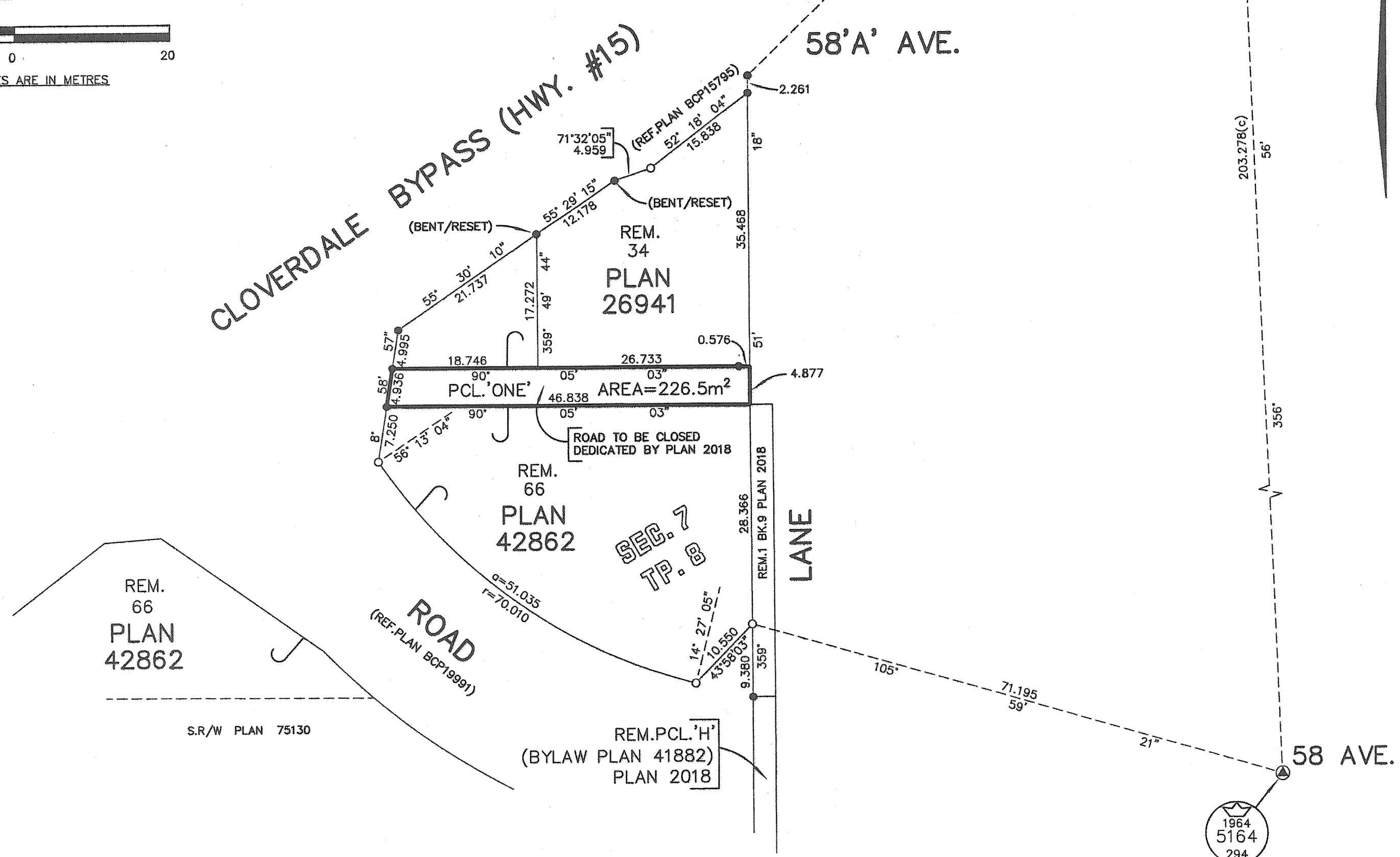
GRID BEARINGS ARE DERIVED FROM OBSERVATIONS BETWEEN
 GEODETIC CONTROL MONUMENTS 5164 AND 80H2554.

THIS PLAN SHOWS HORIZONTAL GROUND-LEVEL DISTANCES EXCEPT
 WHERE OTHERWISE NOTED. TO COMPUTE GRID DISTANCES, MULTIPLY
 GROUND LEVEL DISTANCES BY COMBINED FACTOR 0.9996070.

SCALE 1:500



ALL DISTANCES ARE IN METRES



PLAN BCP _____

DEPOSITED IN THE LAND TITLE OFFICE
 AT NEW WESTMINSTER, B.C.

_____, 2007.

REGISTRAR

CITY OF SURREY

MAYOR; DIANNE L. WATTS

CITY CLERK;

WITNESS AS TO THE SIGNATURE OF THE CITY CLERK

ADDRESS OF WITNESS

OCCUPATION OF WITNESS

THIS PLAN LIES WITHIN THE GREATER
 VANCOUVER REGIONAL DISTRICT

I, SCOTT E. NETHERTON, A BRITISH COLUMBIA LAND SURVEYOR, OF SURREY,
 IN BRITISH COLUMBIA, CERTIFY THAT I WAS PRESENT AT AND PERSONALLY
 SUPERINTENDED THE SURVEY REPRESENTED BY THIS PLAN, AND THAT THE
 SURVEY AND PLAN ARE CORRECT. THE FIELD SURVEY WAS COMPLETED ON
 THE 31ST DAY OF JANUARY, 2007. THE PLAN WAS COMPLETED
 AND CHECKED, AND THE CHECKLIST FILED UNDER ECP# 60072, ON
 THE 26TH DAY OF JANUARY, 2007.

S.E. Netherton

B.C.L.S.

CITY OF SURREY
 SURVEY SECTION

14245 - 56 AVE.
 SURREY, B.C. V3X 3A2
 TEL (604) 591-4253
 FAX (604) 591-8693

S1964B2.dwg