

CITY OF SURREY

BY-LAW NO. 16425

A by-law to amend "Surrey Zoning By-law, 1993, No. 12000,"
as amended.

.....

The Council of the City of Surrey, in open meeting assembled, ENACTS AS FOLLOWS:

1. Surrey Zoning By-law, 1993, No. 12000, as amended, is hereby further amended pursuant to the provisions of Section 903 of the *Local Government Act*, R.S.B.C. 1996, c.323, as amended, by changing the classification of the following parcels of land, presently shown upon the maps designated as the Zoning Maps and marked as Schedule "A" under Part 3 of Surrey Zoning By-law, 1993, No. 12000, as amended, as follows:

FROM: ONE-ACRE RESIDENTIAL ZONE (RA)
TO: SPECIAL CARE HOUSING 2 ZONE (RMS-2)

Portions of land shown on a Survey Plan attached hereto and forming part of this by-law as Schedule A, certified correct by Mike Bernemann, B.C.L.S. on the 4th day of July, 2007, called Block "A", containing 1.481 hectares and more particularly described as follows:

Portion of Parcel Identifier: 009-871-349
Lot 4 Section 16 Township 8 New Westminster District Plan 13768

(Portion of 7129 - 188 Street)

Parcel Identifier: 009-441-611
South 196 Feet Lot 3 Section 16 Township 8 New Westminster District Plan 11037

(7083 - 188 Street)

Parcel Identifier: 001-014-234
Lot 2 Section 16 Township 8 New Westminster District Plan 11037

(7069 - 188 Street)

2. This By-law shall be cited for all purposes as "Surrey Zoning By-law, 1993, No. 12000, Amendment By-law, 2010, No. 16425."

PASSED FIRST AND SECOND READING on the 9th day of June, 2007.

PUBLIC HEARING HELD thereon on the 23rd day of July, 2007.

PASSED THIRD READING on the 23rd day of July, 2007.

RECONSIDERED AND FINALLY ADOPTED, signed by the Mayor and Clerk, and sealed with the Corporate Seal on the 12th day of July, 2010.

_____MAYOR

_____CLERK

h:\by-laws\adopted bylaws\2010\byl 16425.docx

Survey Plan to Accompany City of Surrey Rezoning
 Bylaw No. 16425 Over Lot 2 Plan 11037 And The South
 196 Feet Of Lot 3 Plan 11037 And Lot 4 Plan 13768
 All of Section 16 TP 8 NWD

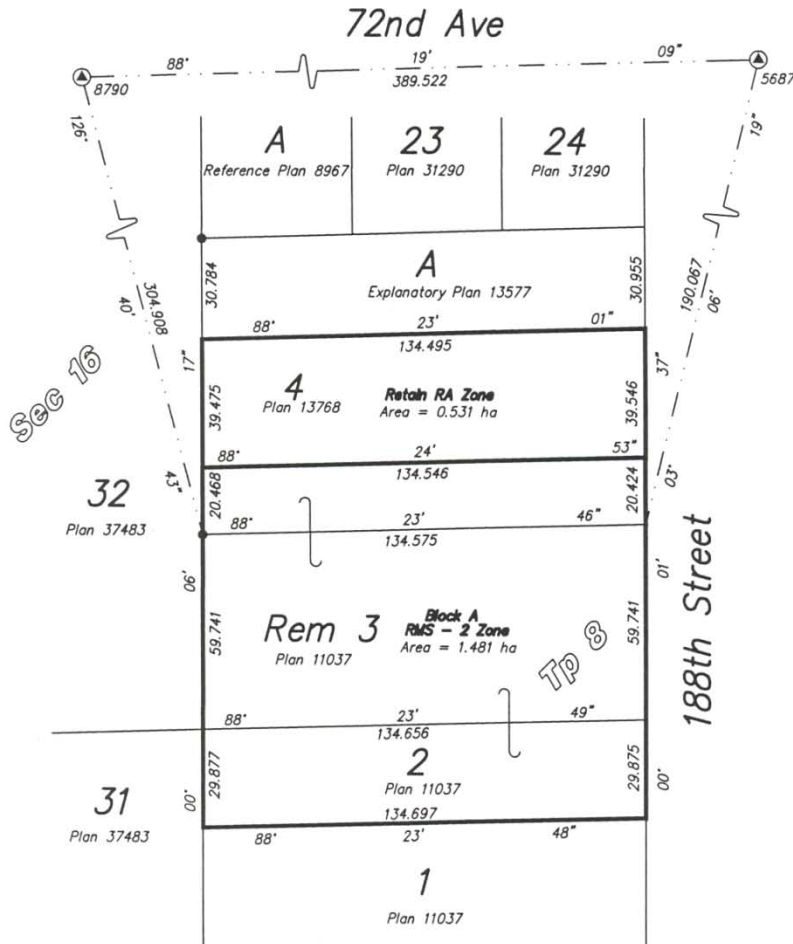
B.C.G.S. 92G.017

SCALE 1 : 1500



Integrated Survey Area No. 1, Surrey, NAD83 (CSRS)

SCHEDULE A



LEGEND:

Grid Bearings Are Derived From Observations Between
 Control Monuments 5687 & 8790
 All Distances Are In Metres And Decimals Thereof

- ⊙ Control Monument Found
- Standard Iron Post Found
- ▭ Block A Rezone To RMS-2 Zone Area=1.481 ha

Certified Correct
 This 4th Day of July 2007

Mike Bernemann
 Mike Bernemann BCLS