

CITY OF SURREY

BY-LAW NO. 16461

A by-law to amend "Surrey Zoning By-law, 1993, No. 12000,  
Amendment By-law, 2005, No. 15795"  
.....

THE CITY COUNCIL of the City of Surrey, in open meeting assembled, ENACTS AS  
FOLLOWS:

1. "Surrey Zoning By-law, 1993, No. 12000, Amendment By-law 2005, No. 15795" is  
hereby amended as follows:

(a) Part 1. is amended by inserting a new sub-section (d) immediately following  
Sub-section (c) as follows:

FROM: ONE-ACRE RESIDENTIAL ZONE (RA)  
TO: COMPREHENSIVE DEVELOPMENT ZONE (CD)

Parcel Identifier: 013-218-344  
Parcel "A" (Explanatory Plan 10141) Timber Lot 18 North East Quarter Section  
28 Township 1 New Westminster District

14293 Crescent Road

(b) Schedule A is deleted and replaced with an amended Schedule A, attached hereto.

2. This By-law shall be cited for purposes as "Surrey Zoning By-law, 1993, No. 12000,  
Amendment By-law 2005, No. 15795, Amendment By-law, 2007, No. 16461. "

PASSED FIRST AND SECOND READING on the 10th day of September, 2007.

PUBLIC HEARING HELD thereon on the 1st day of October, 2007.

PASSED THIRD READING ON THE 1st day of October, 2007.

RECONSIDERED AND FINALLY ADOPTED, signed by the Mayor and Clerk, and sealed  
with the Corporate Seal on the 5th day of November, 2007.

\_\_\_\_\_ MAYOR

\_\_\_\_\_ CLERK

SCHEDULE A



SCALE 1 : 1750 DISTANCES ARE IN METRES

**INTEGRATED SURVEY AREA NO.1  
(SURREY)**

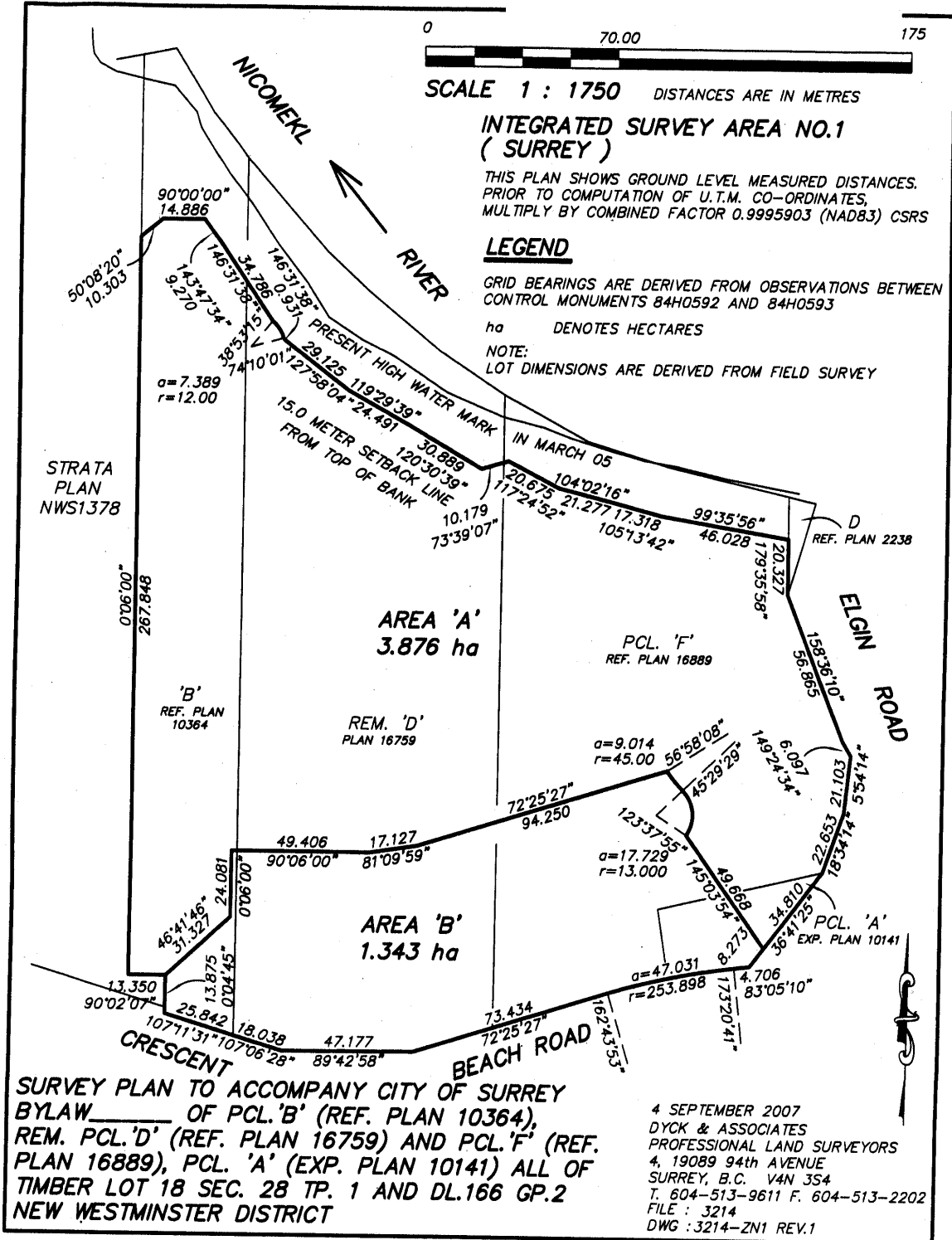
THIS PLAN SHOWS GROUND LEVEL MEASURED DISTANCES.  
PRIOR TO COMPUTATION OF U.T.M. CO-ORDINATES.  
MULTIPLY BY COMBINED FACTOR 0.9995903 (NAD83) CSRS

**LEGEND**

GRID BEARINGS ARE DERIVED FROM OBSERVATIONS BETWEEN  
CONTROL MONUMENTS 84H0592 AND 84H0593

ha DENOTES HECTARES

NOTE:  
LOT DIMENSIONS ARE DERIVED FROM FIELD SURVEY



**SURVEY PLAN TO ACCOMPANY CITY OF SURREY  
BYLAW \_\_\_\_\_ OF PCL. 'B' (REF. PLAN 10364),  
REM. PCL. 'D' (REF. PLAN 16759) AND PCL. 'F' (REF.  
PLAN 16889), PCL. 'A' (EXP. PLAN 10141) ALL OF  
TIMBER LOT 18 SEC. 28 TP. 1 AND DL.166 GP.2  
NEW WESTMINSTER DISTRICT**

4 SEPTEMBER 2007  
DYCK & ASSOCIATES  
PROFESSIONAL LAND SURVEYORS  
4, 19089 94th AVENUE  
SURREY, B.C. V4N 3S4  
T. 604-513-9611 F. 604-513-2202  
FILE : 3214  
DWG : 3214-ZN1 REV.1