

CITY OF SURREY

BY-LAW NO. 16470

A by-law to amend "Surrey Zoning By-law, 1993, No. 12000,"  
as amended.

.....

The Council of the City of Surrey, in open meeting assembled, ENACTS AS FOLLOWS:

1. Surrey Zoning By-law, 1993, No. 12000, as amended, is hereby further amended pursuant to the provisions of Section 903 of the *Local Government Act*, R.S.B.C. 1996, c.323, as amended, by changing the classification of the following parcels of land, presently shown upon the maps designated as the Zoning Maps and marked as Schedule "A" under Part 3 of Surrey Zoning By-law, 1993, No. 12000, as amended, as follows:

FROM: ONE-ACRE RESIDENTIAL ZONE (RA)  
TO: SEMI-DETACHED RESIDENTIAL ZONE (RF-SD)

Portion of Parcel Identifier: 002-390-132  
Parcel "A" (K5440E) of Block 4 Except: Part Subdivided by Plan 19852 Section 15 Township 2 New Westminster District Plan 5888, shown in heavy outline on Schedule "A" attached hereto and forming part of this by-law certified correct by Gene Paul Nikula B.C.L.S. on the 6th day of September, 2007, called Block A and containing 1368.5 square metres and more particularly described as follows:

(Portion of 14432 - 70A Avenue)

FROM: ONE-ACRE RESIDENTIAL ZONE (RA)  
TO: SINGLE FAMILY RESIDENTIAL (g) ZONE (RF-g)

Portion of Parcel Identifier: 002-390-132  
Parcel "A" (K5440E) of Block 4 Except: Part Subdivided by Plan 19852 Section 15 Township 2 New Westminster District Plan 5888, shown in heavy outline on Schedule "A" attached hereto and forming part of this by-law certified correct by Gene Paul Nikula B.C.L.S. on the 6th day of September, 2007, called Block B containing 1792.0 square metres and more particularly described as follows:

(Portion of 14432 - 70A Avenue)

2. This By-law shall be cited for all purposes as "Surrey Zoning By-law, 1993, No. 12000, Amendment By-law, 2007, No. 16470."

PASSED FIRST AND SECOND READING on the 1st day of October, 2007.

PUBLIC HEARING HELD thereon on the 15th day of October, 2007.

PASSED THIRD READING on the 15th day of October, 2007.

RECONSIDERED AND FINALLY ADOPTED, signed by the Mayor and Clerk, and sealed with the Corporate Seal on the 26th day of July, 2010.

\_\_\_\_\_MAYOR

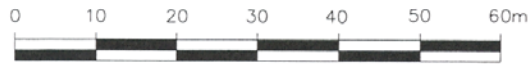
\_\_\_\_\_CLERK

**SURVEY PLAN TO ACCOMPANY CITY OF SURREY  
BYLAW NO. 16470 OVER PARTS OF PARCEL "A"(K5440E)  
EXCEPT: PART SUBDIVIDED BY PLAN 19852;  
SECTION 15 TOWNSHIP 2 NWD PLAN 19852.**

B.C.G.S. 92G016  
CITY OF SURREY

LEGEND

SCALE 1:750



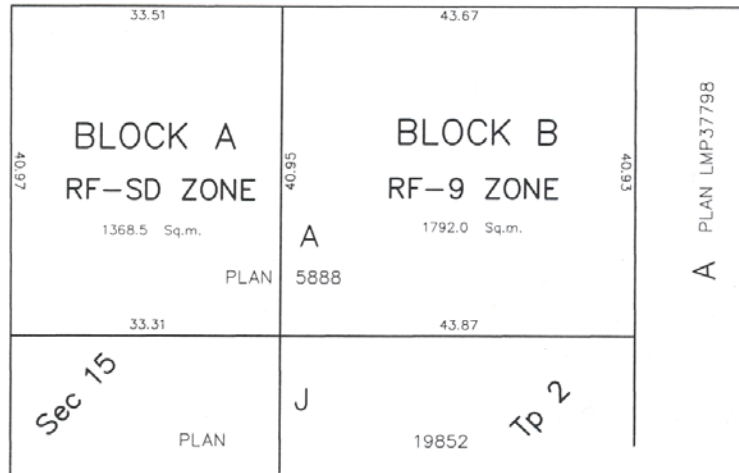
(All distances are in metres)

*-property dimensions are derived  
from Land Title Office records*

**70A AVENUE**



**144th STREET**



© COPYRIGHT  
**DHALIWAL AND ASSOCIATES**  
LAND SURVEYING INC.  
121-13140 80th Avenue  
Surrey, B.C. V3W 3B2  
Phone: 604 501-6188  
Fax: 604 501-6189  
File: 0709001-201.DWG

Certified correct according to filed survey.  
This 16th day of September, 2007.

GENE NIKULAP B.C.L.S. 803  
 MISSION NO. 8110

**THIS PLAN LIES WITHIN THE  
GREATER VANCOUVER REGIONAL DISTRICT**

**THIS DOCUMENT IS NOT VALID UNLESS  
ORIGINALLY SIGNED AND SEALED**