

CITY OF SURREY

BY-LAW NO. 16500B

A by-law to amend "Surrey Zoning By-law, 1993, No. 12000,"
as amended.

.....

The Council of the City of Surrey, in open meeting assembled, ENACTS AS FOLLOWS:

1. Surrey Zoning By-law, 1993, No. 12000, as amended, is hereby further amended pursuant to the provisions of Section 903 of the *Local Government Act*, R.S.B.C. 1996, c.323, as amended, by changing the classification of the following parcels of land, presently shown upon the maps designated as the Zoning Maps and marked as Schedule "A" under Part 3 of Surrey Zoning By-law, 1993, No. 12000, as amended, as follows:

FROM: ONE-ACRE RESIDENTIAL ZONE (RA)
TO: SINGLE FAMILY RESIDENTIAL (12) ZONE (RF-12)

Portion of Parcel Identifier: 011-432-675
Lot 2 Section 32 Block 1 North Range 1 East New Westminster District Plan 9374 as shown in heavy outline on Schedule "A" attached hereto and forming part of this By-law as Block 3 containing 9009.7 square metres, certified correct by John Onderwater, B.C.L.S. on the 28th day of November, 2007.

Portion of 17340 - 4 Avenue

2. This By-law shall be cited for all purposes as "Surrey Zoning By-law, 1993, No. 12000, Amendment By-law, 2007, No. 16500B."

PASSED FIRST AND SECOND READING on the 3rd day of December, 2007.

PUBLIC HEARING HELD thereon on the 17th day of December, 2007.

PASSED THIRD READING on the 17th day of December, 2007.

RECONSIDERED AND FINALLY ADOPTED, signed by the Mayor and Clerk, and sealed with the Corporate Seal on the 12th day of July, 2010.

_____MAYOR

_____CLERK

**SURVEY PLAN TO ACCOMPANY CITY OF SURREY
REZONING BYLAW 16500A/B OF LOT 2 SECTION 32
BLOCK 1 NORTH RANGE 1 EAST N.W.D PLAN 9374**

SCALE 1:1500



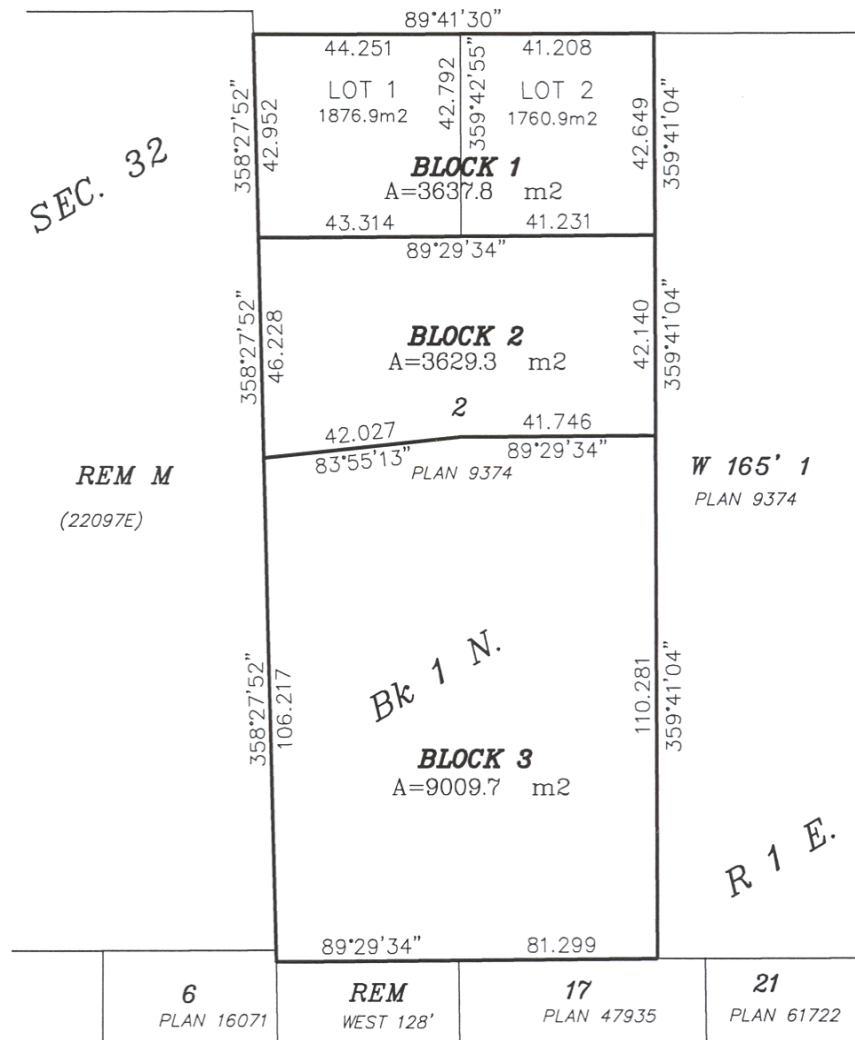
All Distances are in Metres.

CITY OF SURREY

Grid Bearings are derived from
OCMS 84H0576 & 86H1285.



4th AVENUE



Underwater Land Surveying
B.C. Land Surveyors
#104-5830 176A Street
Cloverdale B.C.

FILE: JS0684_RZ2

© Certified correct, completed on
the 28th day of November., 2007.

*This Plan Lies Within The
Greater Vancouver Regional District*

[Signature]
B.C.L.S.