

CITY OF SURREY

BY-LAW NO. 16597

A By-law to close and to remove the dedication  
of a highway of a portion of 145 Street.

.....

WHEREAS pursuant to Subsection 40(1)(a) of the *Community Charter*, S.B.C. 2003, c. 26, the Council may, by by-law, close all or part of a highway that is vested in the municipality to all or some types of traffic;

AND WHEREAS pursuant to Section 40(2) of the *Community Charter*, S.B.C. 2003, c. 26, the Council may, by by-law, remove the dedication of a highway that has been closed by a by-law under Subsection 40(1)(a).

NOW THEREFORE the Council of the City of Surrey in open meeting assembled, ENACTS as follows:

1. That portion of road lying in Section 10 Township 2 New Westminster District, shown outlined in heavy outline on a Reference Plan attached hereto, and forming part of this by-law, duly signed by the Mayor and Clerk, prepared by Gene Paul Nikula, B.C.L.S. on the 27th day of February, 2008, and more particularly described as follows:

That portion of road dedicated by Plan 34406, called Parcel "A"  
and containing 207.2 square metres,

(hereinafter referred to as that portion of 145 Street)

shall be closed to traffic.

2. The dedication as highway be removed of said portion of 145 Street.
3. This By-law may be cited for all purposes as "Surrey Close and Remove the Dedication of Highway of a Portion of 145 Street By-law, 2008, No. 16597".

READ A FIRST, SECOND AND THIRD TIME on the 10th day of March, 2008.

NOTICE OF INTENTION

ADVERTISED on the 14th day of March and the 21st day of March, 2008, in the SURREY NOW newspaper.

RECONSIDERED AND FINALLY ADOPTED, signed by the Mayor and Clerk, and sealed with the Corporate Seal on the 31st day of March, 2008.

\_\_\_\_\_ MAYOR

\_\_\_\_\_ CLERK

REFERENCE PLAN TO ACCOMPANY THE CITY OF SURREY  
 HIGHWAY DEDICATION CANCELLATION BYLAW NO. 16597 COVERING  
 ROAD SHOWN ON PLAN 34406 SECTION 10  
 TOWNSHIP 2 NEW WESTMINSTER DISTRICT

PURSUANT TO SECTION 120 OF THE LAND TITLE ACT AND SECTION 40 COMMUNITY CHARTER  
 B.C.G.S. 92G016  
 CITY OF SURREY

PLAN BCP

REF. No. \_\_\_\_\_

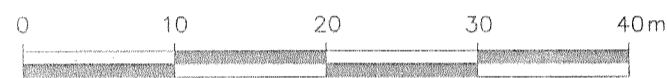
Deposited in the Land Title Office at  
 New Westminster, B.C.

This \_\_\_\_\_ day of \_\_\_\_\_ 2008.

Assistant Deputy Registrar

LEGEND

SCALE 1:500

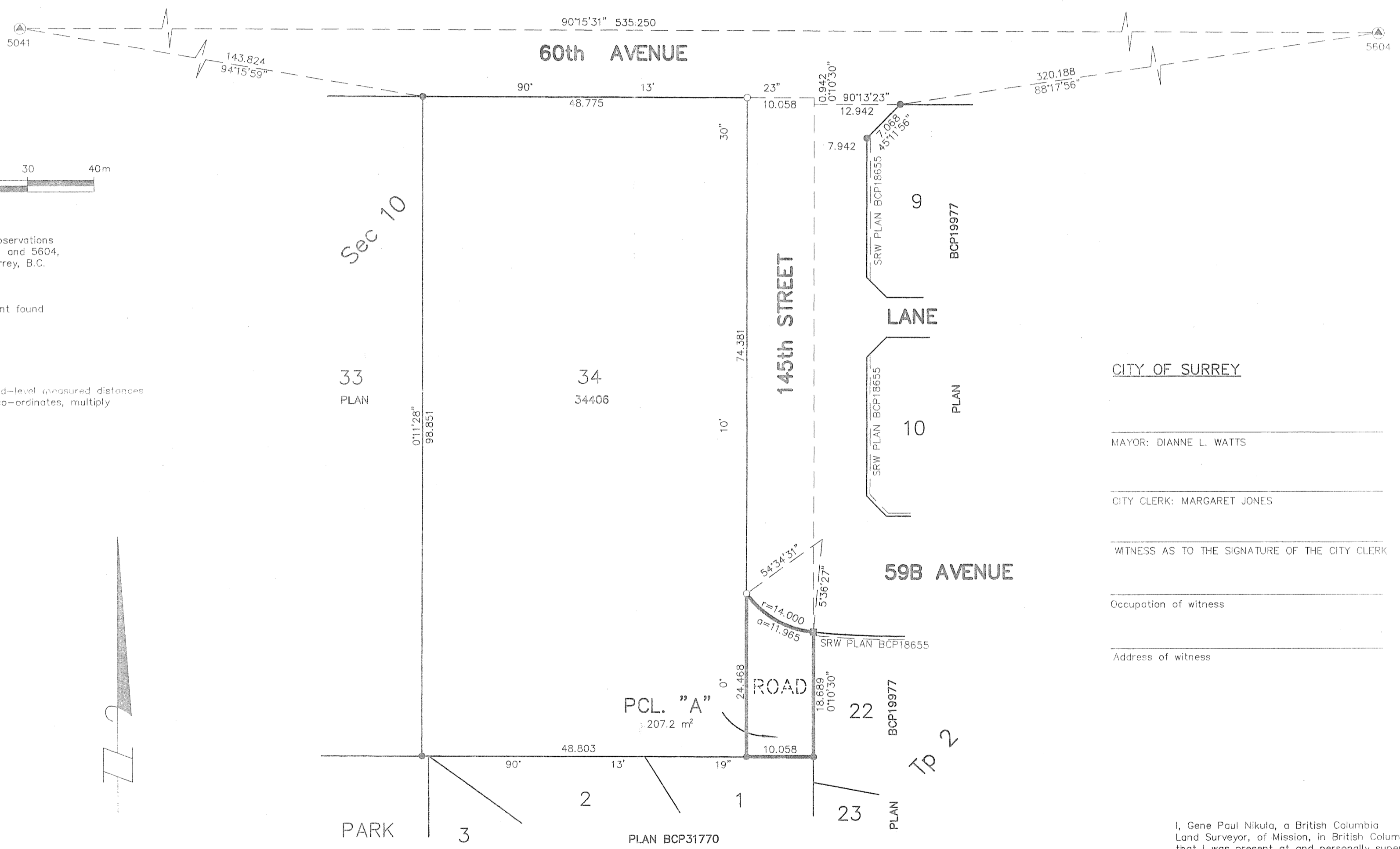


(All distances are in metres)

Grid bearings are derived from observations  
 between control monuments 5041 and 5604,  
 Integrated Survey Area No. 1, Surrey, B.C.  
 NAD 83 (CSRS)

- ⊕ Indicates control monument found
- Indicates iron post found
- Indicates iron post placed
- Indicates lead plug found

This plan shows horizontal ground-level measured distances  
 Prior to computation of U.T.M. co-ordinates, multiply  
 by combined factor 0.99959505.



CITY OF SURREY

MAYOR: DIANNE L. WATTS

CITY CLERK: MARGARET JONES

WITNESS AS TO THE SIGNATURE OF THE CITY CLERK

Occupation of witness

Address of witness

I, Gene Paul Nikula, a British Columbia  
 Land Surveyor, of Mission, in British Columbia, certify  
 that I was present at and personally supervised  
 the survey represented by this plan and that the survey  
 and plan are correct. The field survey was completed on  
 the 15th day of February, 2008. The plan was completed and  
 checked, and the checklist filed under ECP # 77721, on  
 the 27th day of February, 2008.

*Gene Nikula*

B.C.L.S. 803

DHALIWAL & ASSOCIATES  
 LAND SURVEYING INC.

121 - 13140 80th Avenue  
 Surrey, B.C.  
 V3W 3B2  
 (ph) 604 501-6188  
 (fx) 604 501-6189

FILE : 0711002-RX1.DWG

THIS PLAN LIES WITHIN THE GREATER VANCOUVER REGIONAL DISTRICT