

CITY OF SURREY

BY-LAW NO. 16734B

A by-law to amend "Surrey Zoning By-law, 1993, No. 12000,"
as amended.

.....

The Council of the City of Surrey, in open meeting assembled, ENACTS AS FOLLOWS:

1. Surrey Zoning By-law, 1993, No. 12000, as amended, is hereby further amended pursuant to the provisions of Section 903 of the *Local Government Act*, R.S.B.C. 1996, c.323, as amended, by changing the classification of the following parcels of land, presently shown upon the maps designated as the Zoning Maps and marked as Schedule "A" under Part 3 of Surrey Zoning By-law, 1993, No. 12000, as amended, as follows:

FROM: ONE-ACRE RESIDENTIAL ZONE (RA)
TO: HALF-ACRE RESIDENTIAL ZONE (RH)

Portion of Parcel Identifier: 016-346-769
Lot B Section 23 Township 1 New Westminster District Plan 86404 as shown on the Survey Plan attached hereto and forming part of this By-law as Schedule A, certified correct by G.A. Rowbotham, B.C.L.S. on the 9th day of July 2008, containing 0.2790 hectares, called Block B and more particularly described as follows:

Portion of 2609 - 158 Street

2. This By-law shall be cited for all purposes as "Surrey Zoning By-law, 1993, No. 12000, Amendment By-law, 2008, No. 16734B."

PASSED FIRST AND SECOND READING on the 14th day of July, 2008.

PUBLIC HEARING HELD thereon on the 28th day of July, 2008.

PASSED THIRD READING on the 28th day of July, 2008.

RECONSIDERED AND FINALLY ADOPTED, signed by the Mayor and Clerk, and sealed with the Corporate Seal on the 4th day of May, 2009.

_____ MAYOR

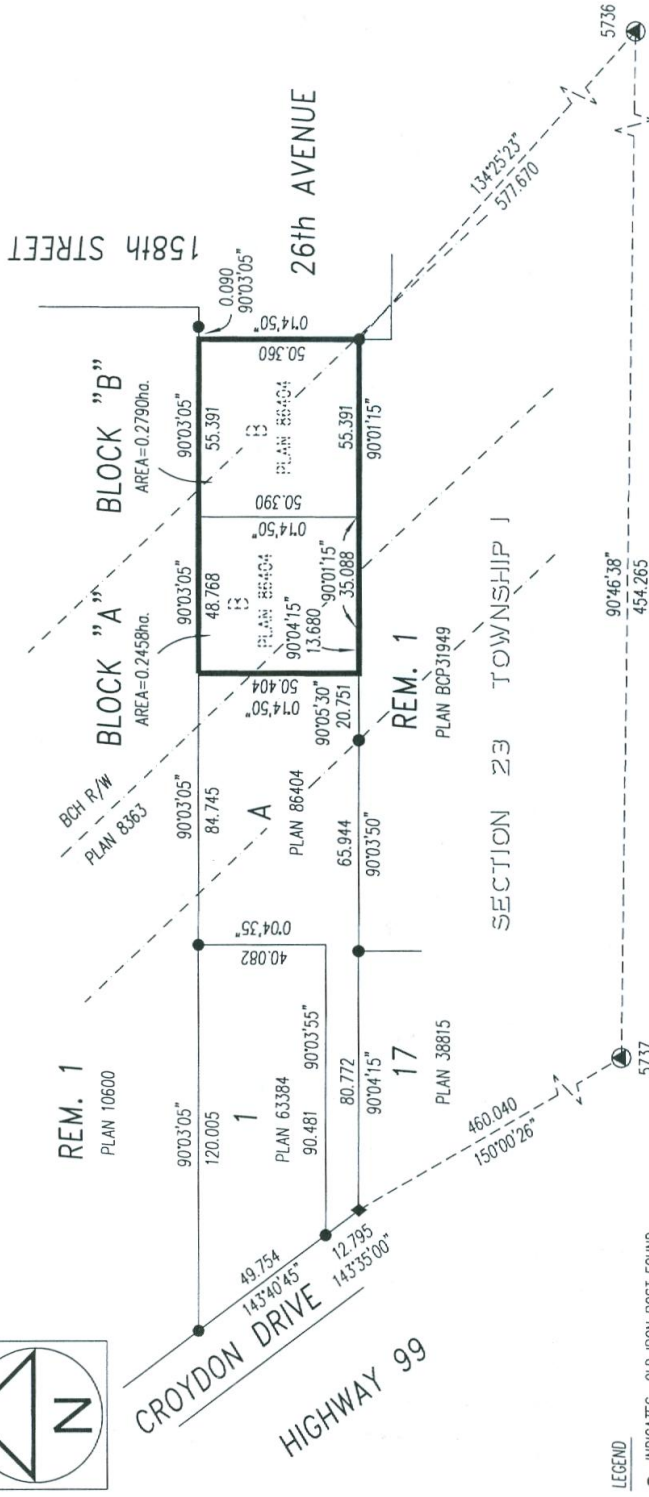
_____ CLERK

SCHEDULE A

SKETCH PLAN TO ACCOMPANY CITY OF SURREY REZONING BYLAW *1673AB* OF:
 LOT B, SECTION 23, TOWNSHIP 1, NEW WESTMINSTER DISTRICT, PLAN 86404

SURREY FILE No. 7908-0113-00

SCALE - 1:2000



- LEGEND**
- INDICATES OLD IRON POST FOUND
 - OLD LEAD PLUG FOUND
 - ◆ OLD ALUMINUM POST
 - OLD CONTROL MONUMENT FOUND
 - ha. HECTARES

OLSEN & ASSOCIATES
 B.C. LAND SURVEYORS
 204-15585 24th AVE.,
 SURREY, B.C. V4A 2J4
 Phone : 531-4067
 Fax : 531-5811

THIS PLAN SHOWS GROUND LEVEL MEASURED DISTANCES.
 PRIOR TO COMPUTATION OF UTM COORDINATES, MULTIPLY
 BY THE COMBINED FACTOR 0.99959285

GRID BEARINGS ARE DERIVED FROM OLD CONTROL
 MONUMENTS 5737 AND 5736

CAR

CERTIFIED CORRECT
 Dated this 9th day of July, 2008
 THIS DOCUMENT IS NOT VALID UNLESS
 ORIGINALLY SIGNED AND SEALED. ©

Our File - 17287BYLAW