

CITY OF SURREY

BY-LAW NO. 16754

A By-law to close and to remove the dedication
of a highway of a portion of 12B Avenue.
.....

WHEREAS pursuant to Subsection 40(1)(a) of the *Community Charter*, S.B.C. 2003, c. 26, the Council may, by by-law, close all or part of a highway that is vested in the municipality to all or some types of traffic;

AND WHEREAS pursuant to Section 40(2) of the *Community Charter*, S.B.C. 2003, c. 26, the Council may, by by-law, remove the dedication of a highway that has been closed by a by-law under Subsection 40(1)(a).

NOW THEREFORE the Council of the City of Surrey in open meeting assembled, ENACTS as follows:

1. That portion of road lying in Section 8, Township 1, New Westminster District, shown outlined in heavy black line on a Reference Plan attached hereto, and forming part of this by-law, duly signed by the Mayor and Clerk, prepared by Montgomery C. Brisson, B.C.L.S. on the 21st day of August, 2008, and more particularly described as follows:

That portion of road dedicated on Plan 2715, called Parcel "A",
and containing 409.9 square metres,

(hereinafter referred to as that portion of 12B Avenue)

shall be closed to traffic.

2. The dedication as highway be removed of said portion of 12B Avenue.
3. This By-law may be cited for all purposes as "Surrey Close and Remove the Dedication of Highway of a Portion of 12B Avenue By-law, 2008, No. 16754".

READ A FIRST, SECOND AND THIRD TIME on the 8th day of September, 2008.

NOTICE OF INTENTION

ADVERTISED on the 12th and 19th day of September, 2008, in the SURREY NOW newspaper.

RECONSIDERED AND FINALLY ADOPTED, signed by the Mayor and Clerk, and sealed with the Corporate Seal on the 29th day of September, 2008.

_____ MAYOR

_____ CLERK

REFERENCE PLAN TO ACCOMPANY CITY OF SURREY HIGHWAY DEDICATION
 CANCELLATION BYLAW NUMBER 16754 OF A PORTION OF ROAD LYING IN
 SECTION 8 TOWNSHIP 1 NEW WESTMINSTER DISTRICT DEDICATED BY PLAN 2715

BCGS 92G.006

PURSUANT TO SECTION 120, LAND TITLE ACT
 PURSUANT TO SECTION 40, COMMUNITY CHARTER

PLAN BCP _ _ _ _

DEPOSITED IN THE LAND TITLE OFFICE
 AT NEW WESTMINSTER, B.C.

_____, 2008.

 REGISTRAR

CITY OF SURREY

MAYOR; DIANNE L. WATTS

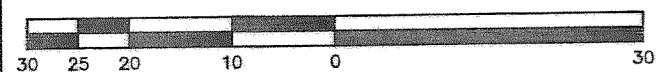
CITY CLERK;

WITNESS AS TO THE SIGNATURE OF THE CITY CLERK

ADDRESS OF WITNESS

OCCUPATION OF WITNESS

SCALE 1:750



ALL DISTANCES ARE IN METRES

THE INTENDED PLOT SIZE OF THIS PLAN IS
 560mm IN WIDTH BY 432mm IN HEIGHT
 (USE C SIZE SHEET) WHEN PLOTTED AT A SCALE OF 1:750.

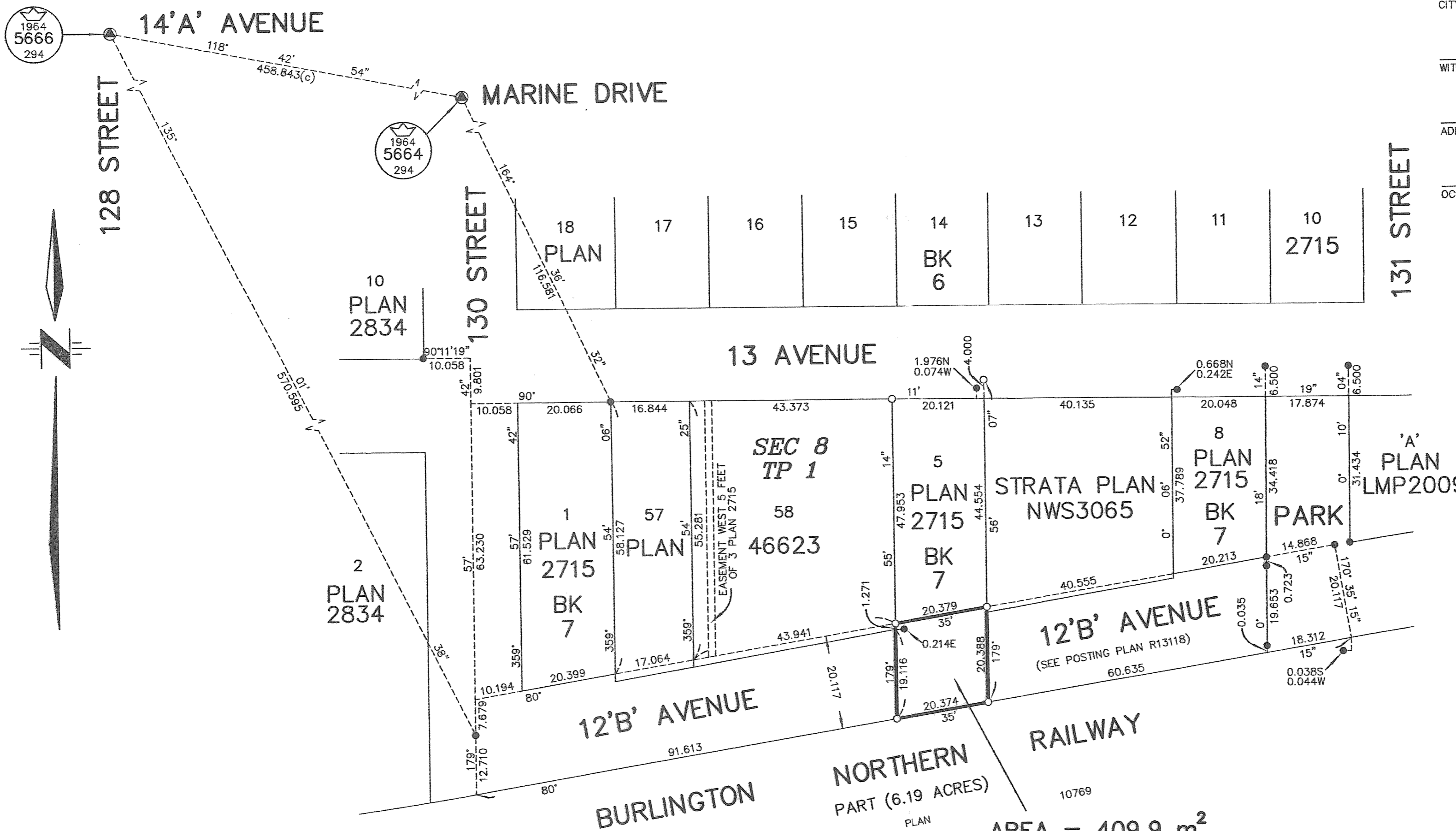
LEGEND

- ⊙ DENOTES CONTROL MONUMENT FOUND
- DENOTES STANDARD IRON POST FOUND
- DENOTES STANDARD IRON POST SET

INTEGRATED SURVEY AREA NO. 1, SURREY, NAD83 (CSRS)

GRID BEARINGS ARE DERIVED FROM OBSERVATIONS BETWEEN
 GEODETIC CONTROL MONUMENTS 5664 AND 5666.

THIS PLAN SHOWS HORIZONTAL GROUND-LEVEL DISTANCES EXCEPT
 WHERE OTHERWISE NOTED. TO COMPUTE GRID DISTANCES, MULTIPLY
 GROUND-LEVEL DISTANCES BY COMBINED FACTOR 0.9995935.



SEC 8
 TP 1

AREA = 409.9 m²
 PARCEL 'A'
 ROAD TO BE CLOSED
 DEDICATED BY PLAN 2715

THIS PLAN LIES WITHIN THE GREATER
 VANCOUVER REGIONAL DISTRICT

I, MONTGOMERY C. BRISSON, A BRITISH COLUMBIA LAND SURVEYOR, OF MISSION,
 IN BRITISH COLUMBIA, CERTIFY THAT I WAS PRESENT AT AND PERSONALLY
 SUPERINTENDED THE SURVEY REPRESENTED BY THIS PLAN, AND THAT THE
 SURVEY AND PLAN ARE CORRECT. THE FIELD SURVEY WAS COMPLETED ON
 THE 22ND DAY OF JULY, 2008. THE PLAN WAS COMPLETED
 AND CHECKED, AND THE CHECKLIST FILED UNDER # B5726, ON
 THE 21st DAY OF AUGUST, 2008.

Montgomery C. Brisson

B.C.L.S.

CITY OF SURREY
 SURVEY SECTION
 14245 - 56 AVE.
 SURREY, B.C. V3X 3A2
 TEL. (604) 591-4253
 FAX. (604) 591-8693