

CITY OF SURREY

BY-LAW NO. 16817

A by-law to amend "Surrey Zoning By-law, 1993, No. 12000,"
as amended.

.....

The Council of the City of Surrey, in open meeting assembled, ENACTS AS FOLLOWS:

1. Surrey Zoning By-law, 1993, No. 12000, as amended, is hereby further amended pursuant to the provisions of Section 903 of the *Local Government Act*, R.S.B.C. 1996, c.323, as amended, by changing the classification of the following parcels of land, presently shown upon the maps designated as the Zoning Maps and marked as Schedule "A" under Part 3 of Surrey Zoning By-law, 1993, No. 12000, as amended, as follows:

FROM: ONE-ACRE RESIDENTIAL ZONE (RA)
TO: SEMI-DETACHED RESIDENTIAL ZONE (RF-SD)

Portion of Parcel Identifier: 012-194-760
Lot 17 Section 17 Township 8 New Westminster District Plan 1510 shown on a Survey Plan attached hereto and forming part of this by-law as Schedule A, certified correct by Alan S.Y. Yu, B.C.L.S. on the 31st day of October, 2008, called Block B, containing 0.236 hectares and described as follows:

Portion of 6975 – 182 Street

2. This By-law shall be cited for all purposes as "Surrey Zoning By-law, 1993, No. 12000, Amendment By-law, 2008, No. 16817."

PASSED FIRST AND SECOND READING on the 24th day of November, 2008.

PUBLIC HEARING HELD thereon on the 15th day of December, 2008.

PASSED THIRD READING on the 15th day of December, 2008.

RECONSIDERED AND FINALLY ADOPTED, signed by the Mayor and Clerk, and sealed with the Corporate Seal on the 9th day of May, 2011.

_____MAYOR

_____CLERK

**BLOCK SURVEY PLAN TO ACCOMPANY CITY OF SURREY
REZONING BYLAW NO. 16817 OF LOT 17 SECTION 17
TOWNSHIP 8 NEW WESTMINSTER DISTRICT PLAN 1510**

SCALE 1 : 1000



ALL DISTANCES ARE IN METRES

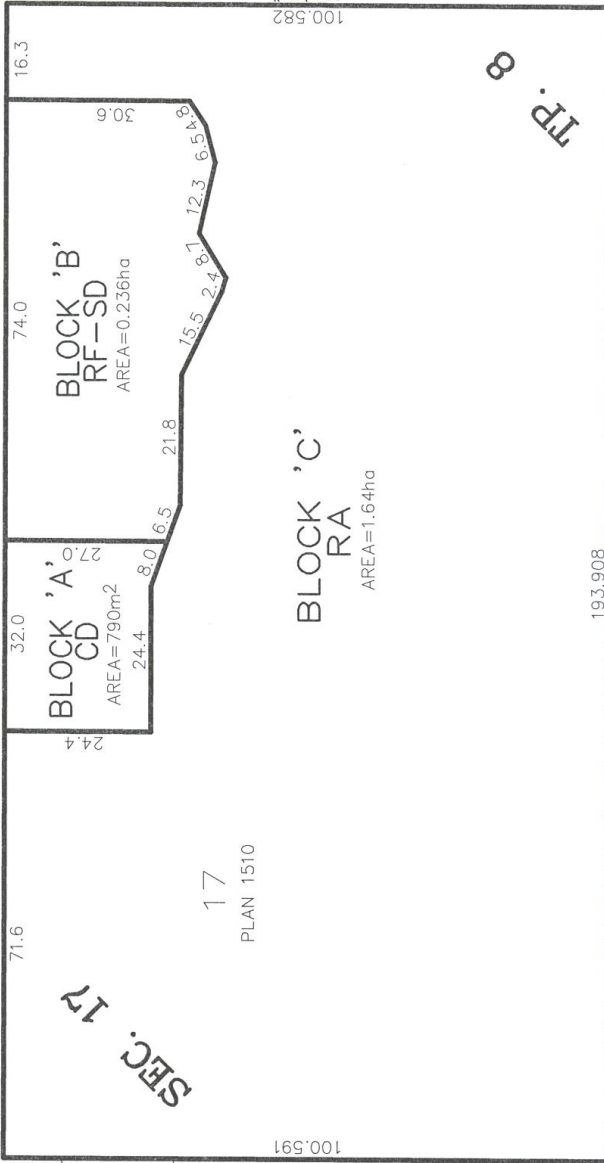
LEGEND

ha DENOTES HECTARES
m² DENOTES SQUARE METRES

NOTE:

Lot dimensions are derived from field survey
and from Zoning Plan: LAYOUT_A.cwg (Layout 38)
obtained from New East Consulting

70th AVENUE



SEC. 17

17

PLAN 1510

PARK

RESTRICTIVE COVENANT
PLAN LMP 38124

Schedule A

TP. 8

PLAN LMP 38121

CERTIFIED CORRECT
DATED THIS 31st DAY OF OCTOBER, 2008

Alan S.Y. Yu B.C.L.S.

INTEGRATED SURVEY AREA No. 1 SURREY

PARK

This plan shows horizontal ground level measured distances.
Prior to computation of U.T.M. coordinates multiply
by a combined factor of 0.99959865
Grid bearings are NAD 83 (CSRS 2005) derived from
control monuments 5934 and 8779

TARGET
LAND SURVEYING
NEW WESTMINSTER B.C.
TEL (604) 524-6161

FILE: NT069-BLOCK