

CITY OF SURREY

BY-LAW NO. 17106

A By-law to close and to remove the dedication
of a highway of a portion of road.
.....

WHEREAS pursuant to Subsection 40(1)(a) of the *Community Charter*, S.B.C. 2003, c. 26, the Council may, by by-law, close all or part of a highway that is vested in the municipality to all or some types of traffic;

AND WHEREAS pursuant to Section 40(2) of the *Community Charter*, S.B.C. 2003, c. 26, the Council may, by by-law, remove the dedication of a highway that has been closed by a by-law under Subsection 40(1)(a).

NOW THEREFORE the Council of the City of Surrey in open meeting assembled, ENACTS as follows:

1. That portion of road lying in Section 27, Block 5 North, Range 2 West, New Westminster District, shown outlined in heavy black line on a Reference Plan attached hereto, and forming part of this by-law, duly signed by the Mayor and Clerk, prepared by William P. Wong, B.C.L.S. on the 27th day of November, 2009, and more particularly described as follows:

That portion of road dedicated by Plan 31407, and containing 244.7 square metres,
(hereinafter referred to as that portion of road)

shall be closed to traffic.

2. The dedication as highway be removed of said portion of road.
3. This By-law may be cited for all purposes as "Surrey Close and Remove the Dedication of Highway of a Portion of Lane at 132 Street and Old Yale Road By-law, 2010, No. 17106".

READ A FIRST, SECOND AND THIRD TIME on the 11th day of January, 2010.

NOTICE OF INTENTION

ADVERTISED on the 15th and 22nd day of January 2010, in the SURREY NOW newspaper.

RECONSIDERED AND FINALLY ADOPTED, signed by the Mayor and Clerk, and sealed with the Corporate Seal on the 25th day of January, 2010.

_____ MAYOR

_____ CLERK

REFERENCE PLAN TO ACCOMPANY CITY OF SURREY
 HIGHWAY DEDICATION CANCELLATION BYLAW NUMBER 17106
 OF A PORTION OF ROAD LYING IN SECTION 27
 BLOCK 5 NORTH RANGE 2 WEST NEW WESTMINSTER DISTRICT
 DEDICATED BY PLAN 31407

PLAN BCP

REF. No. _____

DEPOSITED IN THE LAND TITLE OFFICE
 AT NEW WESTMINSTER, B.C.
 THIS _____ DAY OF _____ 20____

BCGS 92G.016

PURSUANT TO SECTION 120 LAND TITLE ACT AND
 SECTION 40, COMMUNITY CHARTER

LEGEND

SCALE 1:400



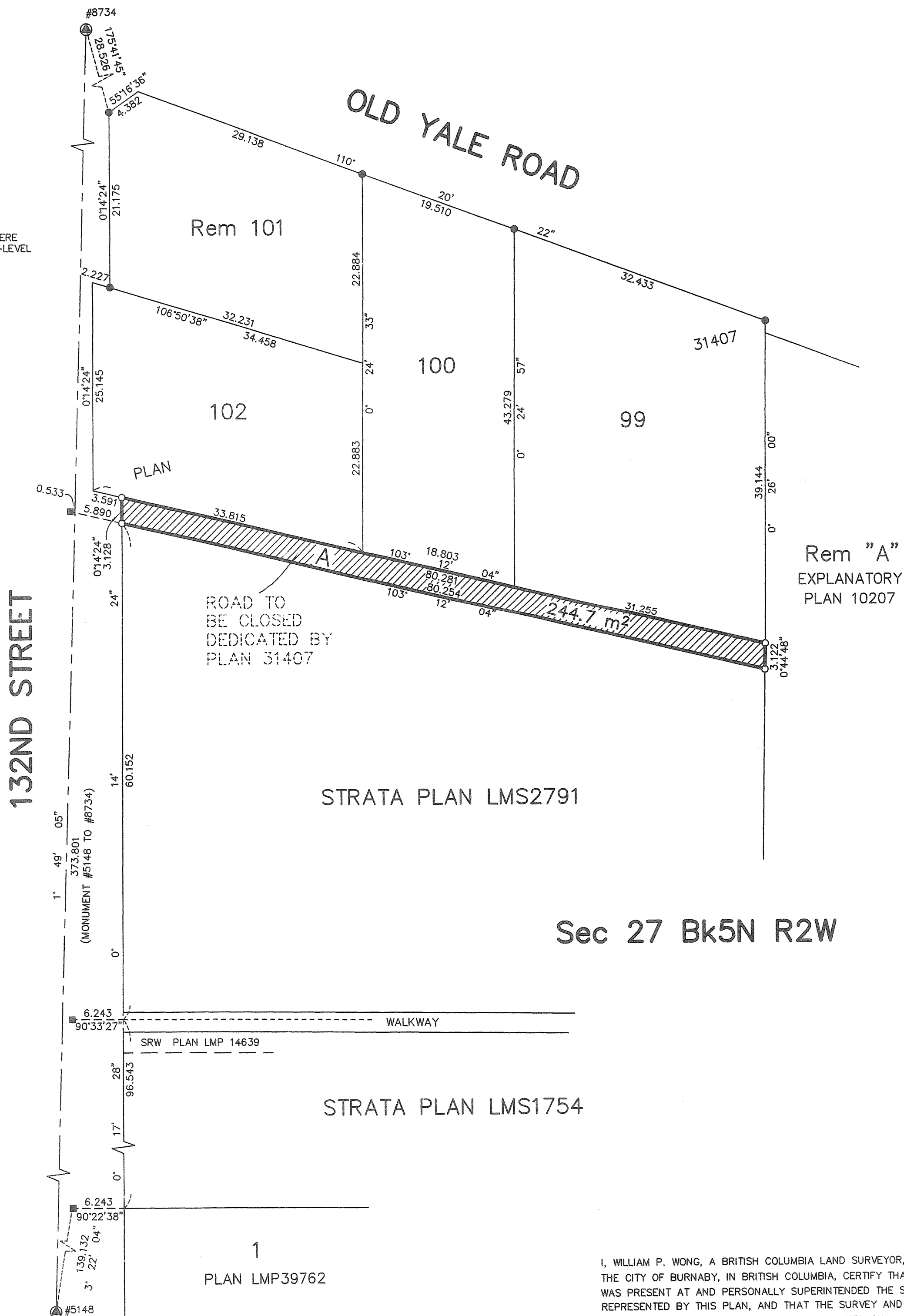
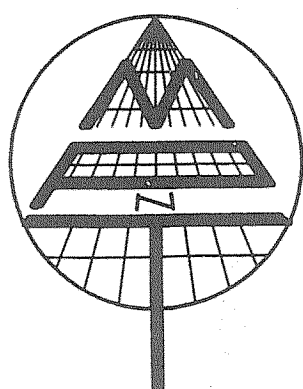
ALL DISTANCES ARE IN METRES.

- INDICATES CONTROL MONUMENT FOUND
- INDICATES STANDARD IRON POST FOUND
- INDICATES STANDARD IRON POST PLACED
- INDICATES LEAD PLUG FOUND
- ▨ INDICATES PORTION OF ROAD TO BE CLOSED

INTEGRATED SURVEY AREA NO. 1, CITY OF SURREY, NAD83 (CSRS).
 GRID BEARINGS ARE DERIVED FROM OBSERVATIONS BETWEEN
 GEODETIC CONTROL MONUMENTS #5148 AND #8734

THIS PLAN SHOWS HORIZONTAL GROUND-LEVEL DISTANCES EXCEPT WHERE
 OTHERWISE NOTED. TO COMPUTE GRID DISTANCES, MULTIPLY GROUND-LEVEL
 DISTANCES BY COMBINED FACTOR 0.9995969509.

THE INTENDED PLOT SIZE OF THIS PLAN IS
 432mm IN WIDTH BY 560mm IN HEIGHT (C SIZE)
 WHEN PLOTTED AT A SCALE OF 1:400.



Sec 27 Bk5N R2W

CITY OF SURREY

MAYOR: DIANNE L. WATTS

CITY CLERK:

WITNESS AS TO SIGNATURE OF THE CITY CLERK

OCCUPATION OF WITNESS

ADDRESS OF WITNESS

MATSON PECK & TOPLISS

SURVEYORS & ENGINEERS

#320 - 11120 HORSESHOE WAY

RICHMOND, B.C., V7A 5H7

PH: 604-270-9331

FAX: 604-270-4137

CADFILE: 15827-004-REF-RC-000.DWG

THIS PLAN LIES WITHIN THE
 GREATER VANCOUVER REGIONAL DISTRICT.

I, WILLIAM P. WONG, A BRITISH COLUMBIA LAND SURVEYOR, OF
 THE CITY OF BURNABY, IN BRITISH COLUMBIA, CERTIFY THAT I
 WAS PRESENT AT AND PERSONALLY SUPERINTENDED THE SURVEY
 REPRESENTED BY THIS PLAN, AND THAT THE SURVEY AND PLAN
 ARE CORRECT. THE FIELD SURVEY WAS COMPLETED ON
 THE 27TH DAY OF NOVEMBER, 2009.
 THE PLAN WAS COMPLETED AND CHECKED, AND THE
 CHECKLIST FILED UNDER #104062 ON
 THE 29TH DAY OF NOVEMBER, 2009.

W.P. Wong

B.C.L.S. (#697)