

CITY OF SURREY

BY-LAW NO. 17339

A by-law to amend "Surrey Zoning By-law, 1993, No. 12000,"
as amended.

.....

The Council of the City of Surrey, in open meeting assembled, ENACTS AS FOLLOWS:

1. Surrey Zoning By-law, 1993, No. 12000, as amended, is hereby further amended pursuant to the provisions of Section 903 of the *Local Government Act*, R.S.B.C. 1996, c.323, as amended, by changing the classification of the following parcels of land, presently shown upon the maps designated as the Zoning Maps and marked as Schedule "A" under Part 3 of Surrey Zoning By-law, 1993, No. 12000, as amended, as follows:

FROM: ONE-ACRE RESIDENTIAL ZONE (RA)

TO: SINGLE FAMILY RESIDENTIAL (12) ZONE (RF-12)

Parcel Identifier: 011-432-667 West 165 Feet Lot 1 Section 32 Block 1
North Range 1 East New Westminster District Plan 9374 As shown on
the Survey Plan attached and hereto and forming part of this By-law, as
Schedule A, certified correct by John Onwater, B.C.L.S. on the 1st day of
September, 2010, containing 5543.7 square metres as Block 3.

(Portion of 17350 - 4 Avenue)

2. This By-law shall be cited for all purposes as "Surrey Zoning By-law, 1993, No. 12000,
Amendment By-law, 2010, No. 17339."

PASSED FIRST AND SECOND READING on the 13th day of December, 2010.

PUBLIC HEARING HELD thereon on the 10th day of January, 2011.

PASSED THIRD READING on the 10th day of January, 2011.

RECONSIDERED AND FINALLY ADOPTED, signed by the Mayor and Clerk, and sealed with the
Corporate Seal on the 28th day of July, 2011.

_____MAYOR

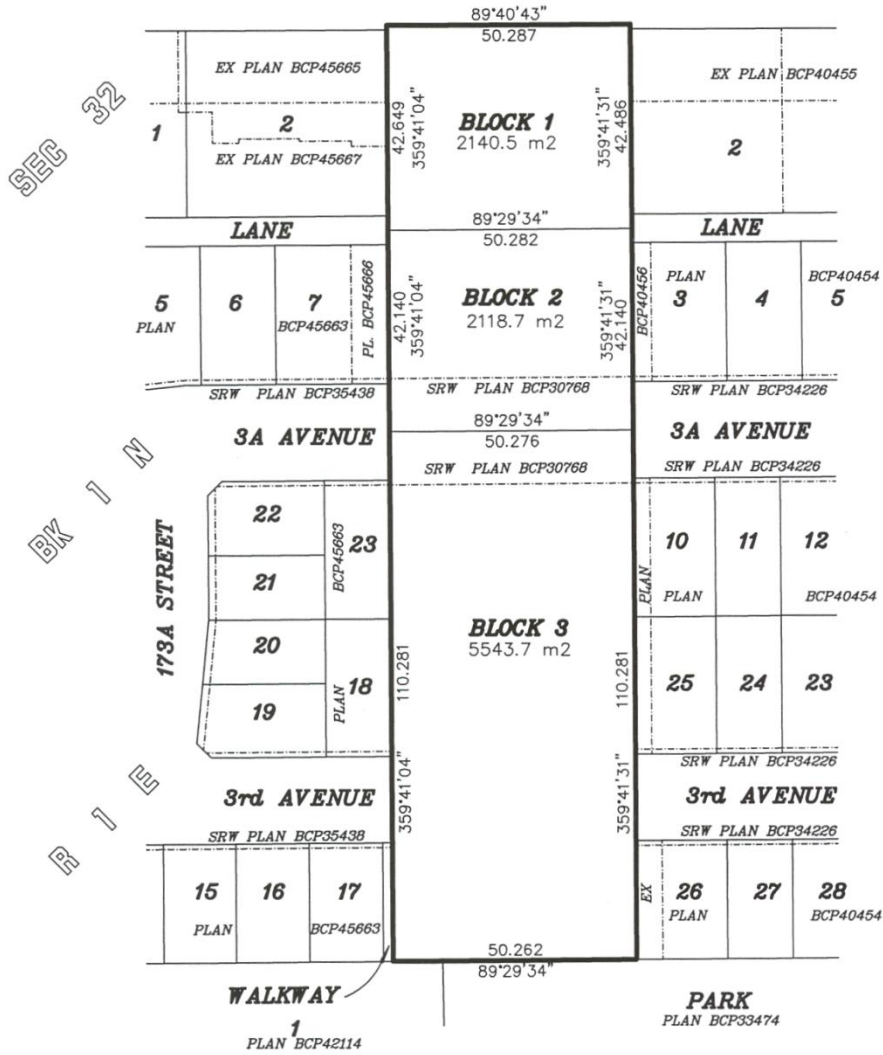
_____CLERK

**SURVEY PLAN TO ACCOMPANY CITY OF SURREY REZONING
BYLAW 17339 OF THE WEST 165 FEET LOT 1 SECTION 32
BLOCK 1 NORTH RANGE 1 EAST N.W.D PLAN 9374**

SCALE 1:1250



All Distances are in Metres.
CITY OF SURREY
Grid Bearings are derived from
OCMS 84H0576 & 86H1285.



Underwater Land Surveying
B.C. Land Surveyors
#104-5830 176A Street
Cloverdale B.C.

FILE: JS1074_RZ

© Certified correct, completed on
the 1st day of September, 2010.

*This Plan Lies Within The
Greater Vancouver Regional District*

B.C.L.S.