

CITY OF SURREY

BY-LAW NO. 17360

A by-law to amend "Surrey Zoning By-law, 1993, No. 12000,"
as amended.

.....

The Council of the City of Surrey, in open meeting assembled, ENACTS AS FOLLOWS:

1. Surrey Zoning By-law, 1993, No. 12000, as amended, is hereby further amended pursuant to the provisions of Section 903 of the *Local Government Act*, R.S.B.C. 1996, c.323, as amended, by changing the classification of the following parcels of land, presently shown upon the maps designated as the Zoning Maps and marked as Schedule "A" under Part 3 of Surrey Zoning By-law, 1993, No. 12000, as amended, as follows:

FROM: ONE-ACRE RESIDENTIAL ZONE (RA)
TO: MULTIPLE RESIDENTIAL 30 ZONE (RM-30)

Parcel Identifier: 012-387-002
South Half Lot 5 Section 15 Township 8 New Westminster District Plan 1809
as shown on the Survey Plan attached hereto and forming part of this By-law as
Schedule A, certified correct by Scott E. Netherton, B.C.L.S. on the 13th day of
January, 2011, containing 0.800 ha called Block A

(Portion of 19407 - 68 Avenue)

Parcel Identifier: 027-133-729
Lot 125 Section 15 township 8 New Westminster District Plan BCP31093
as shown on Schedule A, containing 1.19 ha called Block D

(19495 - 68 Avenue)

Parcel 027-133-753
Lot 128 Section 15 Township 8 New Westmisnter District Plan BCP31093
as shown on Schedule A, containing 0.214 ha called Block C

(Portion of 19501 - 68 Avenue)

Portion of 194A Street
as shown on Schedule A , containing 0.147 ha called Block B.

2. This By-law shall be cited for all purposes as "Surrey Zoning By-law, 1993, No. 12000, Amendment By-law, 2011, No. 17360."

PASSED FIRST AND SECOND READING on the 24th day of January, 2011 .

PUBLIC HEARING HELD thereon on the 7th day of February, 2011.

PASSED THIRD READING on the 7th day of February, 2011.

RECONSIDERED AND FINALLY ADOPTED, signed by the Mayor and Clerk, and sealed with the Corporate Seal on the 12th day of September, 2011.

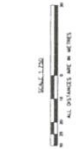
_____MAYOR

_____CLERK

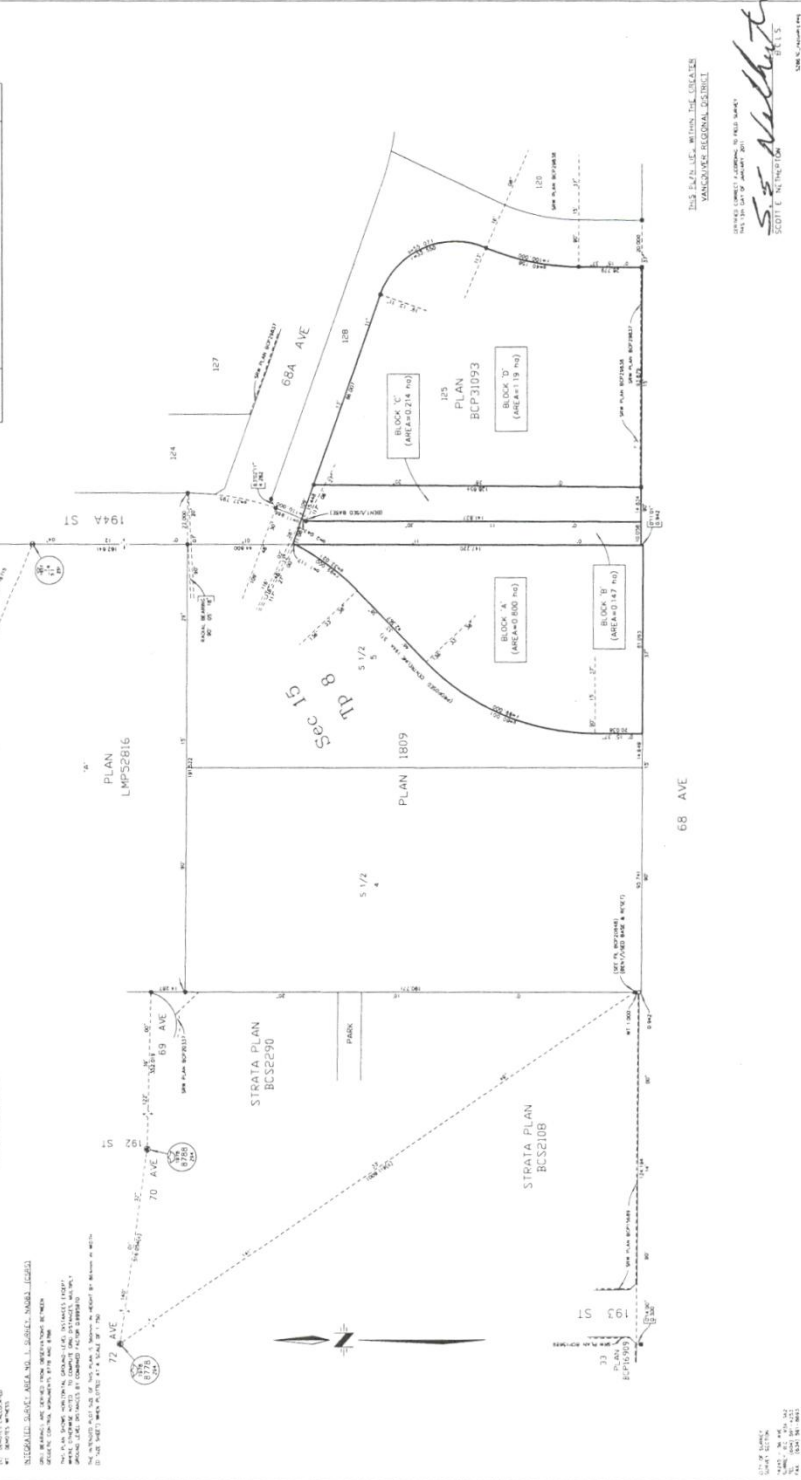
Schedule A

SURVEY PLAN TO ACCOMPANY CITY OF SURREY REZONING BYLAW No. **17360**, OVER PART SOUTH HALF LOT 5, PLAN 1809,
 PART LOT 128, PLAN BCP31093, LOT 125, PLAN BCP31093, PART ROAD DEDICATED BY PLAN 1809, AND PART ROAD DEDICATED BY PLAN BCP31093,
 A.L. OF SECTION 15, TOWNSHIP 8, NEW WESTMINSTER DISTRICT,
 B.C.G.S. 926,017

BLOCK	AREA (SQ. METERS)	AREA (SQ. FEET)
BLOCK 'A'	1,111.37	4,288.16
BLOCK 'B'	1,111.37	4,288.16
BLOCK 'C'	1,111.37	4,288.16
BLOCK 'D'	1,111.37	4,288.16
BLOCK 'E'	1,111.37	4,288.16
BLOCK 'F'	1,111.37	4,288.16
BLOCK 'G'	1,111.37	4,288.16
BLOCK 'H'	1,111.37	4,288.16
BLOCK 'I'	1,111.37	4,288.16
BLOCK 'J'	1,111.37	4,288.16
BLOCK 'K'	1,111.37	4,288.16
BLOCK 'L'	1,111.37	4,288.16
BLOCK 'M'	1,111.37	4,288.16
BLOCK 'N'	1,111.37	4,288.16
BLOCK 'O'	1,111.37	4,288.16
BLOCK 'P'	1,111.37	4,288.16
BLOCK 'Q'	1,111.37	4,288.16
BLOCK 'R'	1,111.37	4,288.16
BLOCK 'S'	1,111.37	4,288.16
BLOCK 'T'	1,111.37	4,288.16
BLOCK 'U'	1,111.37	4,288.16
BLOCK 'V'	1,111.37	4,288.16
BLOCK 'W'	1,111.37	4,288.16
BLOCK 'X'	1,111.37	4,288.16
BLOCK 'Y'	1,111.37	4,288.16
BLOCK 'Z'	1,111.37	4,288.16



LEGEND:
 1. BOUNDARY OF LOT 5, PLAN 1809
 2. BOUNDARY OF LOT 128, PLAN BCP31093
 3. BOUNDARY OF LOT 125, PLAN BCP31093
 4. BOUNDARY OF SECTION 15, TOWNSHIP 8, NEW WESTMINSTER DISTRICT
 5. BOUNDARY OF BLOCK 'A', PLAN BCP31093
 6. BOUNDARY OF BLOCK 'B', PLAN BCP31093
 7. BOUNDARY OF BLOCK 'C', PLAN BCP31093
 8. BOUNDARY OF BLOCK 'D', PLAN BCP31093
 9. BOUNDARY OF BLOCK 'E', PLAN BCP31093
 10. BOUNDARY OF BLOCK 'F', PLAN BCP31093
 11. BOUNDARY OF BLOCK 'G', PLAN BCP31093
 12. BOUNDARY OF BLOCK 'H', PLAN BCP31093
 13. BOUNDARY OF BLOCK 'I', PLAN BCP31093
 14. BOUNDARY OF BLOCK 'J', PLAN BCP31093
 15. BOUNDARY OF BLOCK 'K', PLAN BCP31093
 16. BOUNDARY OF BLOCK 'L', PLAN BCP31093
 17. BOUNDARY OF BLOCK 'M', PLAN BCP31093
 18. BOUNDARY OF BLOCK 'N', PLAN BCP31093
 19. BOUNDARY OF BLOCK 'O', PLAN BCP31093
 20. BOUNDARY OF BLOCK 'P', PLAN BCP31093
 21. BOUNDARY OF BLOCK 'Q', PLAN BCP31093
 22. BOUNDARY OF BLOCK 'R', PLAN BCP31093
 23. BOUNDARY OF BLOCK 'S', PLAN BCP31093
 24. BOUNDARY OF BLOCK 'T', PLAN BCP31093
 25. BOUNDARY OF BLOCK 'U', PLAN BCP31093
 26. BOUNDARY OF BLOCK 'V', PLAN BCP31093
 27. BOUNDARY OF BLOCK 'W', PLAN BCP31093
 28. BOUNDARY OF BLOCK 'X', PLAN BCP31093
 29. BOUNDARY OF BLOCK 'Y', PLAN BCP31093
 30. BOUNDARY OF BLOCK 'Z', PLAN BCP31093



THIS PLAN, A.C. WITHIN THE CITIES OF
 VANCOUVER REGIONAL DISTRICT
 S.S. Nulley
 SCOTT E. NUTTING
 L.M.S. 10,000,000

DATE OF SURVEY: 2017
 DATE OF PLAN: 2017
 DATE OF ASSESSMENT: 2017
 DATE OF REVISION: 2017
 DATE OF APPROVAL: 2017