

CITY OF SURREY

BY-LAW NO. 17365

A By-law to close and to remove the dedication
of a highway of a portion of road
.....

WHEREAS pursuant to Subsection 40(1)(a) of the *Community Charter*, S.B.C. 2003, c. 26, the Council may, by by-law, close all or part of a highway that is vested in the municipality to all or some types of traffic;

AND WHEREAS pursuant to Section 40(2) of the *Community Charter*, S.B.C. 2003, c. 26, the Council may, by by-law, remove the dedication of a highway that has been closed by a by-law under Subsection 40(1)(a).

NOW THEREFORE the Council of the City of Surrey in open meeting assembled, ENACTS as follows:

1. That portion of Section 26, Township 1, New Westminster District dedicated as Road on Plan BCP6068, shown outlined in heavy black line on Reference Plan attached hereto, duly signed by the Mayor and Clerk, prepared by Ray Janzen, BCLS, on the 9th day of February, 2012 and described as follows:

That portion of Road dedicated by Plan 6068, called Parcel 'A' and containing 272.4 square metres.

(hereinafter referred to as that portion of Road)

shall be closed to traffic.

2. The dedication as highway be removed of said portions of Road.
3. This By-law may be cited for all purposes as "Surrey Close and Remove the Dedication of Highway of a Portion of Road Adjacent to 15955, 15971 and 15989 – 39A Avenue By-law, 2012, No. 17365".

PASSED FIRST READING on the 12th day of March, 2012.

PASSED SECOND READING on the 12th day of March, 2012.

PASSED THIRD READING on the 12th day of March, 2012.

NOTICE OF INTENTION

ADVERTISED on the 22nd day and 29th day of March, 2012 in the SURREY LEADER and on the 29th day of March in the PEACE ARCH newspapers.

RECONSIDERED AND FINALLY ADOPTED, signed by the Mayor and Clerk, and sealed with the Corporate Seal on the 28th day of May, 2012.

_____ MAYOR

_____ CLERK

REFERENCE PLAN TO ACCOMPANY
 CITY OF SURREY HIGHWAY DEDICATION CANCELLATION BYLAW _ _ _ _
 OF A PORTION OF SECTION 26, TOWNSHIP 1,
 NEW WESTMINSTER DISTRICT
 SHOWN ROAD ON PLAN BCP6068
 BCGS 92G.007

PLAN BCP
 DEPOSITED IN THE LAND TITLE OFFICE
 AT NEW WESTMINSTER, B.C.
 THIS DAY OF _____, 201 .



ALL DISTANCES ARE IN METRES

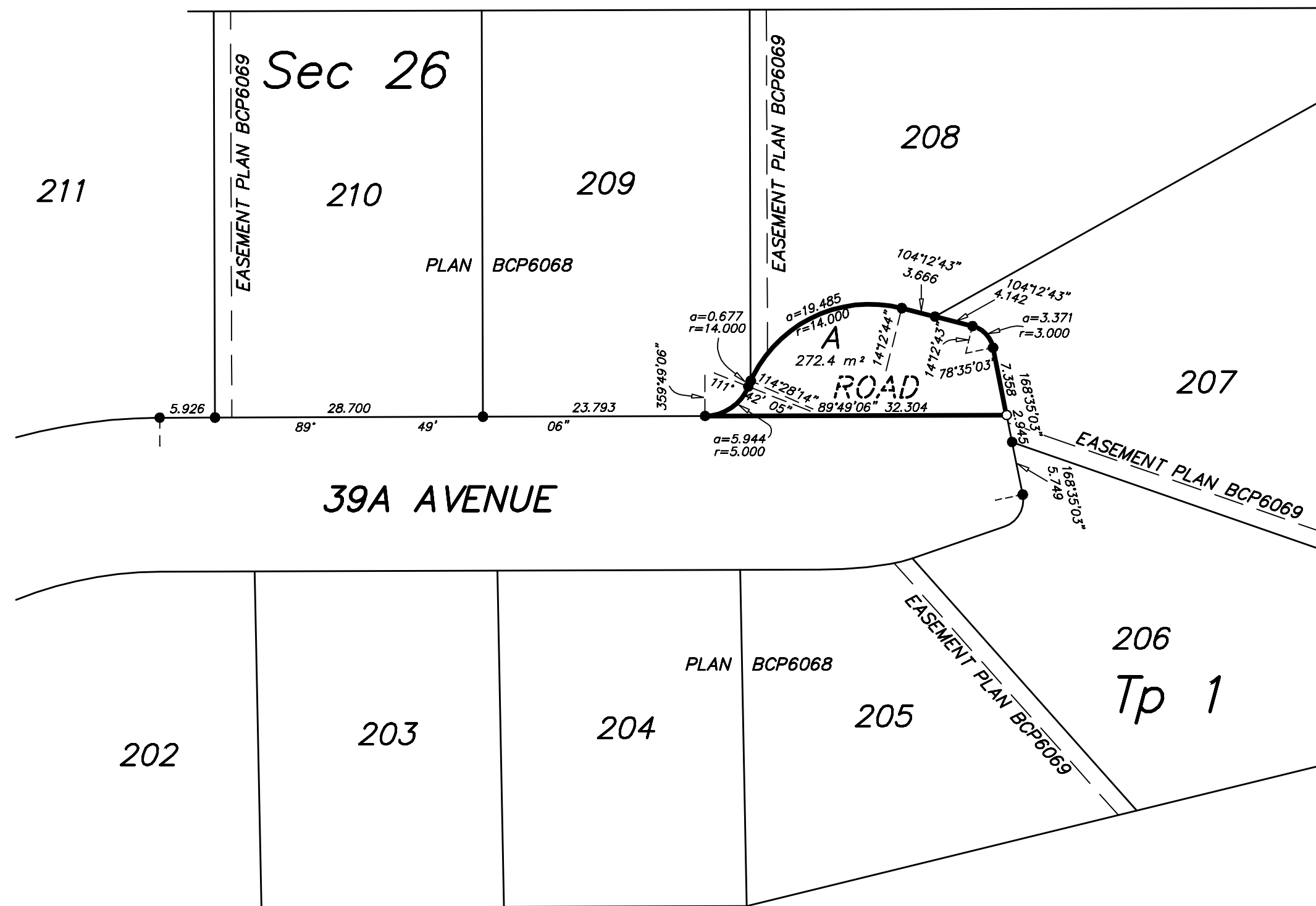
The intended plot size of this plan is 560mm in width by 432mm in height
 (C size) when plotted at a scale of 1:500

PURSUANT TO SECTION 120, LAND TITLE ACT
 AND SECTION 40 OF THE COMMUNITY CHARTER

REGISTRAR
 REF:

40th AVENUE

PT 175
 PLAN LMP52124



CITY OF SURREY

MAYOR: DIANNE WATTS

CITY CLERK: JANE SOWIK

WITNESS AS TO SIGNATURE OF THE CITY CLERK

ADDRESS OF WITNESS

OCCUPATION OF WITNESS

Rem 2
 PLAN LMP42537

LEGEND :

- INDICATES STANDARD IRON POST FOUND
- INDICATES STANDARD IRON POST PLACED

INTEGRATED SURVEY AREA No.1, CITY OF SURREY, NAD83 (CSRS)
 GRID BEARINGS ARE DERIVED FROM PLAN BCP6068

THIS PLAN SHOWS HORIZONTAL GROUND-LEVEL DISTANCES
 EXCEPT WHERE OTHERWISE NOTED. TO COMPUTE GRID DISTANCES,
 MULTIPLY GROUND-LEVEL DISTANCES BY COMBINED FACTOR 0.9996032

MURRAY & ASSOCIATES
 201-12448 82nd AVENUE
 SURREY, B.C.
 V3W 3E9
 (604) 597-9189

4
 PLAN LMP42537

THIS PLAN LIES WITHIN THE GREATER VANCOUVER REGIONAL DISTRICT
 (CITY OF SURREY)

I, RAYMOND HAROLD JANZEN, A BRITISH COLUMBIA LAND SURVEYOR,
 CERTIFY THAT I WAS PRESENT AT AND PERSONALLY SUPERINTENDED THE
 THE SURVEY REPRESENTED BY THIS PLAN, AND THAT THE SURVEY
 AND PLAN ARE CORRECT. THE FIELD SURVEY WAS COMPLETED ON THE
 THE 07th DAY OF FEBRUARY, 2012. THE PLAN WAS COMPLETED AND CHECKED,
 AND THE CHECKLIST FILED UNDER #132855 ON THE 09th DAY OF FEBRUARY, 2012.

FILE 8082-430