

CITY OF SURREY

BY-LAW NO. 17375

A by-law to close Park dedicated by a Subdivision Plan in
the City of Surrey.

.....

WHEREAS

- A. Pursuant to Section 27 of the *Community Charter, SBC, 2003, c. 26*, as amended, the Council of the City of Surrey may by by-law dispose of all or part of dedicated parkland vested in a municipality provided that the proceeds of the disposal are to be placed to the credit of the park land acquisition reserve fund.

NOW, THEREFORE, the Council of the City of Surrey, in open meeting assembled, ENACTS AS FOLLOWS:

1. The Council hereby authorizes the disposal of all that portion of park lying in North East Quarter Section 17, Township 1, New Westminster District, shown in heavy black outline on a Reference Plan attached hereto and forming part of this by-law as Schedule A, certified correct by G. A. Rowbotham, B.C.L.S. on the 21st day of February, 2011, and more particularly described as follows:

That portion of park dedicated on Plan LMP36499, called Parcel "A" and containing 497.4 square metres, and civically described as 13550 - 24 Avenue.

2. The Council hereby authorizes that instead of taking land in exchange of the park disposal, the proceeds of the disposal be placed to the credit of the reserve fund established under Section 188 of the *Community Charter, SBC, 2003, c. 26*, as amended, for the purpose of acquiring park lands.
3. As required by Section 84 of the *Community Charter, SBC, 2003, c. 26*, as amended, an alternative approval process was provided in accordance with Section 86.

4. This By-law may be cited as "Surrey Park Closure By-law, 2011, No. 17375".

PASSED FIRST READING on the 4th day of April, 2011.

PASSED SECOND READING on the 4th day of April, 2011.

PASSED THIRD READING on the 4th day of April, 2011.

NOTICE OF INTENTION ADVERTISED in the SURREY LEADER AND PEACE ARCH NEWS on the 8th and 15th day of April, 2011.

RECEIVED APPROVAL OF THE ELECTORS on the 16th day of May, 2011.

RECONSIDERED AND FINALLY ADOPTED, signed by the Mayor and Clerk, and sealed with the Corporate Seal on 30th day of May, 2011.

_____ MAYOR

_____ CLERK

REFERENCE PLAN TO ACCOMPANY CITY OF SURREY PARK CLOSING BYLAW NUMBER 17375 OF
 A PORTION OF PARK LYING IN NORTH EAST QUARTER SECTION 17, TOWNSHIP 1,
 NEW WESTMINSTER DISTRICT DEDICATED BY PLAN LMP36499

PLAN BCP 48420

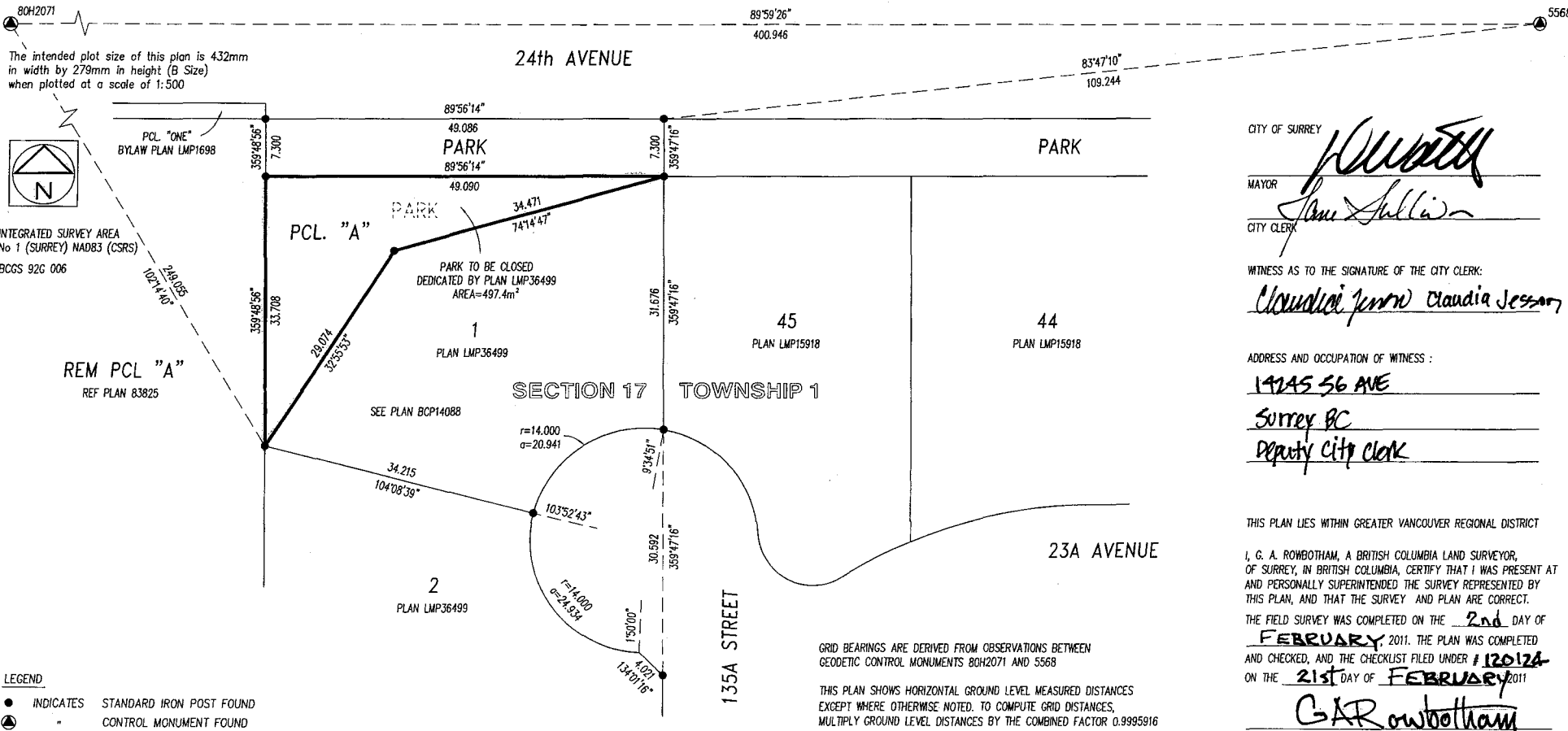
DEPOSITED IN THE LAND TITLE OFFICE AT
 NEW WESTMINSTER, B.C.
 THIS _____ DAY OF _____ 2011

DEPUTY REGISTRAR



ALL DISTANCES ARE IN METRES AND DECIMALS
 THEREOF UNLESS OTHERWISE NOTED.

PURSUANT TO SECTION 120 LAND TITLE ACT
 PURSUANT TO SECTION 27 OF THE COMMUNITY CHARTER



CITY OF SURREY
 MAYOR *[Signature]*
 CITY CLERK *[Signature]*

WITNESS AS TO THE SIGNATURE OF THE CITY CLERK:
[Signature] Claudia Jesson

ADDRESS AND OCCUPATION OF WITNESS :
14245 56 AVE
Surrey BC
Deputy City Clerk

THIS PLAN LIES WITHIN GREATER VANCOUVER REGIONAL DISTRICT
 I, G. A. ROWBOTHAM, A BRITISH COLUMBIA LAND SURVEYOR,
 OF SURREY, IN BRITISH COLUMBIA, CERTIFY THAT I WAS PRESENT AT
 AND PERSONALLY SUPERINTENDED THE SURVEY REPRESENTED BY
 THIS PLAN, AND THAT THE SURVEY AND PLAN ARE CORRECT.
 THE FIELD SURVEY WAS COMPLETED ON THE 2nd DAY OF
FEBRUARY, 2011. THE PLAN WAS COMPLETED
 AND CHECKED, AND THE CHECKLIST FILED UNDER # 120124
 ON THE 21st DAY OF FEBRUARY, 2011
[Signature] G.A. Rowbotham

LEGEND
 ● INDICATES STANDARD IRON POST FOUND
 ○ " " CONTROL MONUMENT FOUND

GRID BEARINGS ARE DERIVED FROM OBSERVATIONS BETWEEN
 GEODETIC CONTROL MONUMENTS 80H2071 AND 5568
 THIS PLAN SHOWS HORIZONTAL GROUND LEVEL MEASURED DISTANCES
 EXCEPT WHERE OTHERWISE NOTED. TO COMPUTE GRID DISTANCES,
 MULTIPLY GROUND LEVEL DISTANCES BY THE COMBINED FACTOR 0.9995916