

CITY OF SURREY

BY-LAW NO. 17648

A by-law to amend "Surrey Zoning By-law, 1993, No. 12000,"
as amended.

.....

The CITY COUNCIL of the City of Surrey, in open meeting assembled, ENACTS AS FOLLOWS:

1. Surrey Zoning By-law, 1993, No. 12000, as amended, is hereby further amended pursuant to the provisions of Section 903 of the *Local Government Act*, R.S.B.C. 1996, c.323, as amended, by changing the classification of the following parcels of land, presently shown upon the maps designated as the Zoning Maps and marked as Schedule "A" under Part 3 of Surrey Zoning By-law, 1993, No. 12000, as amended, as follows:

FROM: ONE-ACRE RESIDENTIAL ZONE (RA)
TO: SINGLE FAMILY RESIDENTIAL ZONE (RF)

Shown on a Survey Plan attached hereto and forming part of this By-law as Schedule A, certified correct by Adam Fulkerson, B.C.L.S. on the 10th day of January, 2012, and more particularly described as follows:

Portion of Parcel Identifier: 010-766-171 Lot 8 Block 3 Section 9 Township 2 New Westminster District Plan 2840 containing 0.305ha, called Block A

(Portion of 6181 - 142 Street)

FROM: ONE-ACRE RESIDENTIAL ZONE (RA)
TO: HALF-ACRE RESIDENTIAL ZONE (RH)

Portion of Parcel Identifier: 010-766-171 Lot 8 Block 3 Section 9 Township 2 New Westminster District Plan 2840 containing 0.257ha, called Block C

(Portion of 6181 - 142 Street)

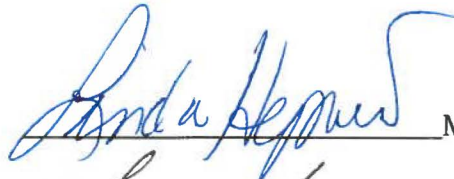
2. This By-law shall be cited for all purposes as "Surrey Zoning By-law, 1993, No. 12000, Amendment By-law, 2012, No. 17648."

READ A FIRST AND SECOND TIME on the 23rd day of April, 2012.

PUBLIC HEARING HELD thereon on the 7th day of May, 2012.

READ A THIRD TIME ON THE 7th day of May, 2012.

RECONSIDERED AND FINALLY ADOPTED, signed by the Mayor and Clerk, and sealed with the Corporate Seal on the 16th day of November, 2015.



MAYOR



CLERK

h:\clerks\by-laws\bylaw library\adopted\17000\17600\byl 17648.docx



SURVEY PLAN TO ACCOMPANY CITY OF SURREY REZONING BYLAW 17648/17649 OF LOT 8 BK 3 SEC 9 TP 2 NWD PLAN 2840

B.C.G.S. 92G.016

CITY OF SURREY

Grid bearings are NAD83 (CSRS 2005) derived from control monuments 5603 AND 80H2017. Lot dimensions derived from field survey.

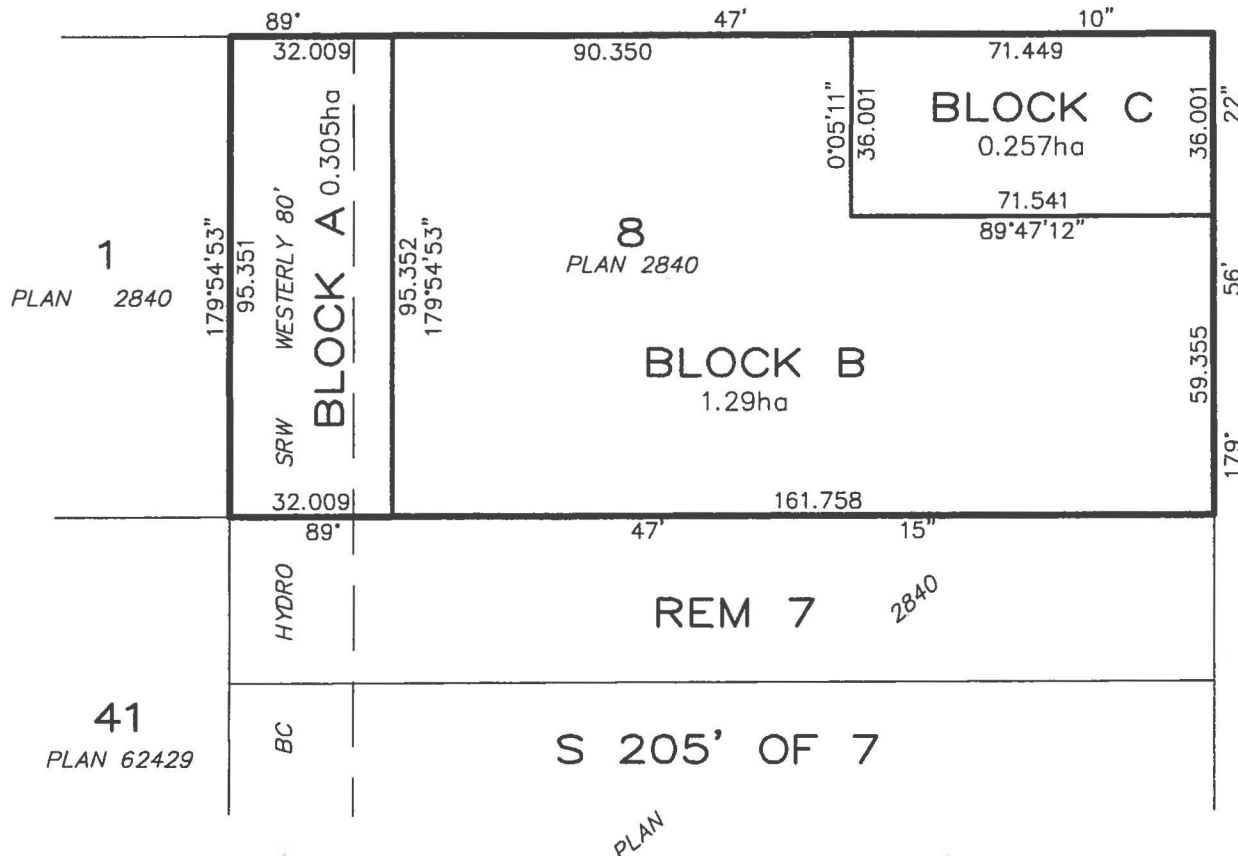


SCALE 1 : 1500



62nd AVENUE

142nd STREET



CERTIFIED CORRECT
Dated this 10th day of January, 2012.

Adam Fulkerson
Adam Fulkerson B.C.L.S.

THIS PLAN LIES WITHIN THE
GREATER VANCOUVER REGIONAL DISTRICT

