

CITY OF SURREY

BY-LAW NO. 17658

A By-law to close and to remove the dedication
of a highway of a portion of road
.....

WHEREAS pursuant to Subsection 40(1)(a) of the *Community Charter*, S.B.C. 2003, c. 26, the Council may, by by-law, close all or part of a highway that is vested in the municipality to all or some types of traffic;

AND WHEREAS pursuant to Section 40(2) of the *Community Charter*, S.B.C. 2003, c. 26, the Council may, by by-law, remove the dedication of a highway that has been closed by a by-law under Subsection 40(1)(a).

NOW THEREFORE the Council of the City of Surrey in open meeting assembled, ENACTS as follows:

1. That portion of Section 16, Township 8, New Westminster District dedicated as Road and shown outlined in heavy black line on Reference Plan attached hereto, duly signed by the Mayor and Clerk, prepared by D. J. Dyck, BCLS, on the 28th day of March, 2012 and described as follows:

That portion of Road dedicated by Plan 35548, called Parcel A and containing 79.8 square metres;

That portion of Lane dedicated by Plan 45739, called Parcel B and containing 15.1 square metres; and

That portion of Road dedicated by Plan 45739, called Parcel C and containing 4.7 square metres,

(hereinafter referred to as that portion of Road)

shall be closed to traffic.

2. The dedication as highway be removed of said portion of Road.
3. This By-law may be cited for all purposes as "Surrey Close and Remove the Dedication of Highway of a Portion of Road Adjacent to 19054 – 68 Avenue By-law, 2012, No. 17658".

PASSED FIRST READING on the 7th day of May, 2012.

PASSED SECOND READING on the 7th day of May, 2012.

PASSED THIRD READING on the 7th day of May, 2012.

NOTICE OF INTENTION

ADVERTISED on the 17th day and 24th day of May, 2012 in the SURREY/NORTH DELTA LEADER and PEACE ARCH NEWS newspapers.

RECONSIDERED AND FINALLY ADOPTED, signed by the Mayor and Clerk, and sealed with the Corporate Seal on the 28th day of May, 2012.

_____ MAYOR

_____ CLERK

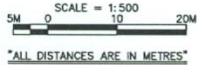
REFERENCE PLAN TO ACCOMPANY THE CITY OF SURREY HIGHWAY DEDICATION
 CANCELLATION BYLAW No. _____ OF PART OF ROAD SHOWN ON PLAN BCP35548
 AND PART OF ROAD AND PART OF LANE SHOWN ON PLAN BCP45739
 ALL IN SECTION 16 TOWNSHIP 8 NEW WESTMINSTER DISTRICT

PLAN BCP _____

DEPOSITED IN THE LAND TITLE
 OFFICE AT NEW WESTMINSTER, B.C.
 THIS _____ DAY OF _____, 2012

PURSUANT TO SECTION 120 LAND TITLE ACT
 PURSUANT TO SECTION 40 COMMUNITY CHARTER

CITY OF SURREY
 BCGS 92G.017



The intended plot size of this plan is 432mm (17") in width
 by 560mm (22") in height (C size) when plotted at a scale of 1:500

INTEGRATED SURVEY AREA NO. 1 (SURREY)
 NAD83 CSRS (GVR02005)

GRID BEARINGS ARE DERIVED FROM OBSERVATIONS BETWEEN
 GEODETIC CONTROL MONUMENTS 5816 AND 8788

THIS PLAN SHOWS HORIZONTAL GROUND-LEVEL DISTANCES,
 EXCEPT WHERE OTHERWISE NOTED.
 TO COMPUTE GRID DISTANCES, MULTIPLY GROUND-LEVEL
 DISTANCES BY COMBINED FACTOR 0.9995963

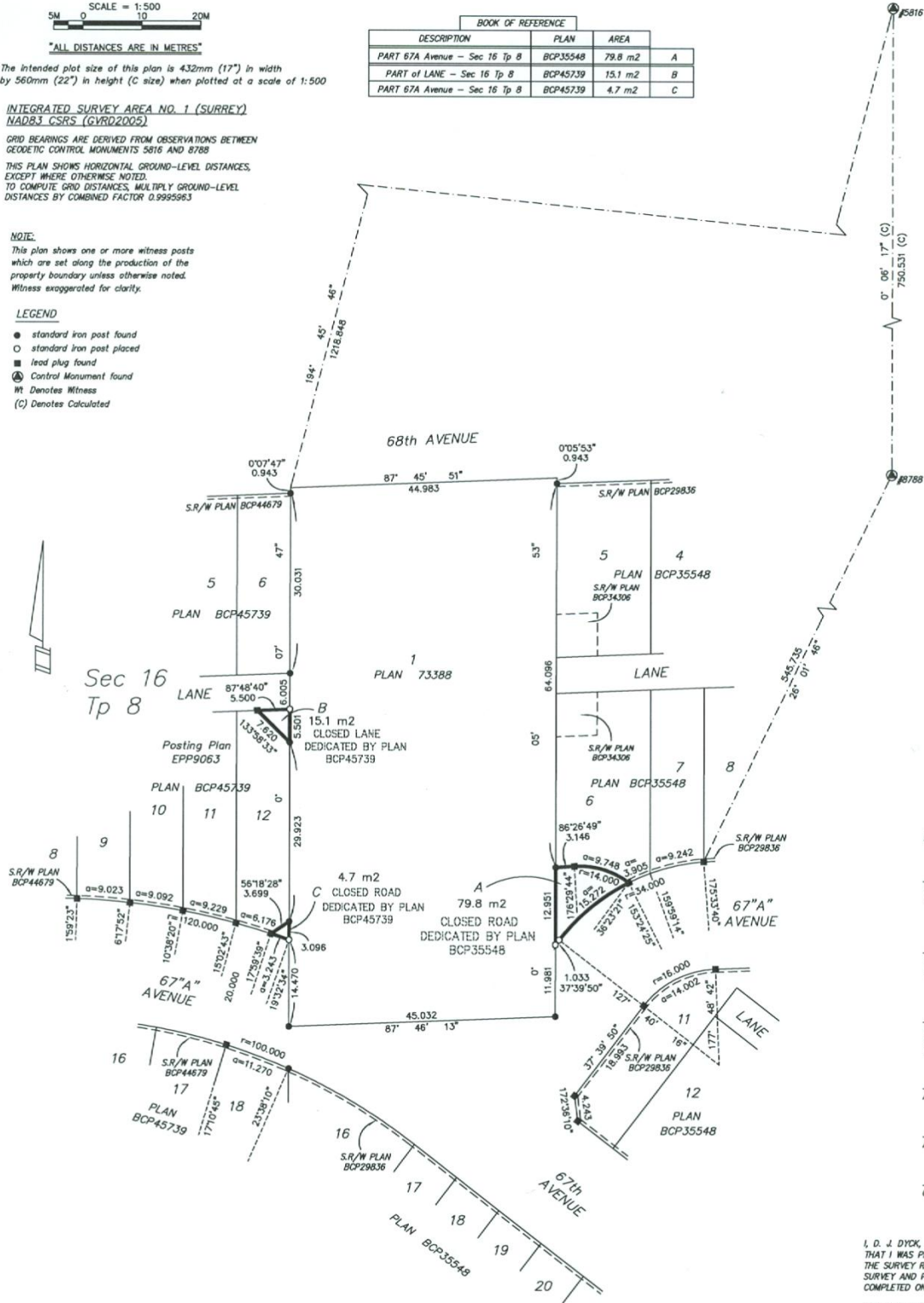
NOTE:

This plan shows one or more witness posts
 which are set along the production of the
 property boundary unless otherwise noted.
 Witness exaggerated for clarity.

LEGEND

- standard iron post found
- standard iron post placed
- lead plug found
- ⊙ Control Monument found
- W Denotes Witness
- (C) Denotes Calculated

BOOK OF REFERENCE			
DESCRIPTION	PLAN	AREA	
PART 67A Avenue - Sec 16 Tp 8	BCP35548	79.8 m ²	A
PART of LANE - Sec 16 Tp 8	BCP45739	15.1 m ²	B
PART 67A Avenue - Sec 16 Tp 8	BCP45739	4.7 m ²	C



CITY OF SURREY

AUTHORIZED SIGNATORY
 Acting Manager Realty Services Division:

AUTHORIZED SIGNATORY
 City Clerk:

WITNESS AS TO SIGNATURE
 OF THE CITY CLERK
 (Print name clearly near signature)

ADDRESS OF WITNESS

ADDRESS OF WITNESS

OCCUPATION OF WITNESS

I, D. J. DYCK, A BRITISH COLUMBIA LAND SURVEYOR, CERTIFY
 THAT I WAS PRESENT AT AND PERSONALLY SUPERINTENDED
 THE SURVEY REPRESENTED BY THIS PLAN, AND THAT THE
 SURVEY AND PLAN ARE CORRECT. THE FIELD SURVEY WAS
 COMPLETED ON THE 28th DAY OF MARCH, 2012.

THE PLAN WAS COMPLETED AND CHECKED, AND THE CHECKLIST
 FILED UNDER #135478, ON THE 25th DAY OF APRIL, 2012.

SOUTH FRASER LAND SURVEYING LTD.
 B.C. LAND SURVEYORS
 SUITE 101 - 7485 130th STREET
 SURREY, B.C. V3W 1H8
 TELEPHONE: 604 599-1886
 FILE: 11724ROADCLOSING

THIS PLAN LIES WITHIN THE
 GREATER VANCOUVER REGIONAL DISTRICT

SIGNATURE OF B.C.L.S.

11724ROADCLOSING