

CITY OF SURREY

BY-LAW NO. 17662

A by-law to amend "Surrey Zoning By-law, 1993, No. 12000,"
as amended.

.....

The Council of the City of Surrey, in open meeting assembled, ENACTS AS FOLLOWS:

1. Surrey Zoning By-law, 1993, No. 12000, as amended, is hereby further amended pursuant to the provisions of Section 903 of the *Local Government Act*, R.S.B.C. 1996, c.323, as amended, by changing the classification of the following parcels of land, presently shown upon the maps designated as the Zoning Maps and marked as Schedule "A" under Part 3 of Surrey Zoning By-law, 1993, No. 12000, as amended, as follows:

FROM: ONE-ACRE RESIDENTIAL ZONE (RA)
TO: SINGLE FAMILY RESIDENTIAL (12) ZONE (RF-12)

Shown on a Survey Plan attached hereto and forming part of this By-law as Schedule A, certified correct by John Onderwater, B.C.L.S. on the 26th day of April, 2012, and more particularly described as follows:

Portion of Parcel Identifier: 004-331-532
South 104 feet of Parcel "F" (Reference Plan with fee deposited 53675F) of the South West Quarter Section 7 Township 8 New Westminster District, Except: Part on Plan BCP17243 containing 1134.1m² and called Block A,

(Portion of 5916 - 168 Street)

FROM: ONE-ACRE RESIDENTIAL ZONE (RA)
TO: SINGLE FAMILY RESIDENTIAL ZONE (RF)

Portion of Parcel Identifier: 004-331-532
South 104 feet of Parcel "F" (Reference Plan with fee deposited 53675F) of the South West Quarter Section 7 Township 8 New Westminster District, Except: Part on Plan BCP17243 containing 671.7m² and called Block B,

(Portion of 5916 - 168 Street)

2. This By-law shall be cited for all purposes as "Surrey Zoning By-law, 1993, No. 12000, Amendment By-law, 2012, No. 17662"

PASSED FIRST READING on the 7th day of May, 2012.

PASSED SECOND READING on the 7th day of May, 2012.

PUBLIC HEARING HELD thereon on the 28th day of May, 2012.

PASSED THIRD READING on the 28th day of May, 2012.

RECONSIDERED AND FINALLY ADOPTED, signed by the Mayor and Clerk, and sealed with the Corporate Seal on the 29th day of July, 2013.

_____MAYOR

_____CLERK

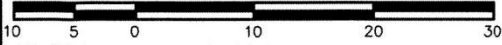
h:\clerks\by-laws\bylaw library\adopted\17000\17600\byl 17662.docx

**SURVEY PLAN TO ACCOMPANY CITY OF SURREY REZONING
 BYLAW 17662, OF THE SOUTH 104 FEET OF PARCEL 'F'
 (REF PLAN WITH FEE DEPOSITED 53675F) OF THE
 SW 1/4 SECTION 7 TOWNSHIP 8 NEW WESTMINSTER
 DISTRICT, EXCEPT: PART ON PLAN BCP17243**

SCHEDULE A

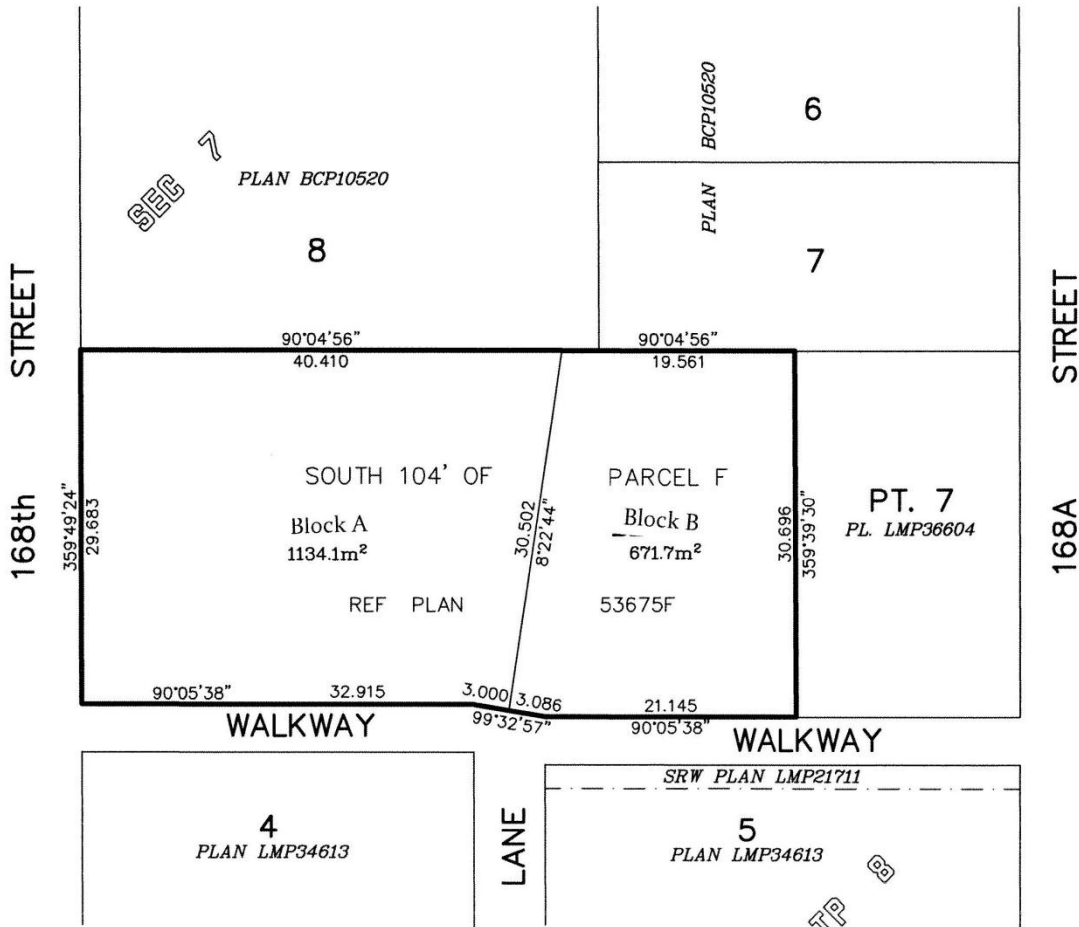


SCALE 1:500



All Distances are in Metres.

CITY OF SURREY



Grid Bearings are derived from
 OCMS 5078 & 8602

Onderwater Land Surveying
 B.C. Land Surveyors
 #104-5830 176A Street
 Cloverdale B.C.

FILE: JS11_108_RZ

© Certified correct, completed on
 the 26th day of April, 2012.

*This Plan Lies Within The
 Greater Vancouver Regional District*

[Signature]
 B.C.L.S.