

CITY OF SURREY

BY-LAW NO. 17679

A By-law to close and to remove the dedication
of a highway of a portion of road
.....

WHEREAS pursuant to Subsection 40(1)(a) of the *Community Charter*, S.B.C. 2003, c. 26, the Council may, by by-law, close all or part of a highway that is vested in the municipality to all or some types of traffic;

AND WHEREAS pursuant to Section 40(2) of the *Community Charter*, S.B.C. 2003, c. 26, the Council may, by by-law, remove the dedication of a highway that has been closed by a by-law under Subsection 40(1)(a).

NOW THEREFORE the Council of the City of Surrey in open meeting assembled, ENACTS as follows:

1. That portion of, Township 8, New Westminster District dedicated as Road and shown outlined in heavy black line on Reference Plan attached hereto, duly signed by the Mayor and Clerk, prepared by Gregory Marston, BCLS, on the 30th day of May, 2012 and described as follows:

That portion of Road dedicated by Section 16, Plan 1372, called Parcel A and containing 1540 square metres;

That portion of Lane dedicated by Section 9, Plan BCP 51215, called Parcel B and containing 1390 square metres;

That portion of Lane dedicated by Section 9, Plan BCP 51215, called Parcel C and containing 12.6 square metres; and

That portion of Road dedicated by Section 9, Plan BCP 51215, called Parcel D and containing 374 square metres,

(hereinafter referred to as that portion of Road)

shall be closed to traffic.

2. The dedication as highway be removed of said portion of Road.
3. This By-law may be cited for all purposes as "Surrey Close and Remove the Dedication of Highway of a Portion of Road Adjacent to 19129 – 64 Avenue By-law, 2012, No. 17679".

PASSED FIRST READING on the 11th day of June, 2012.

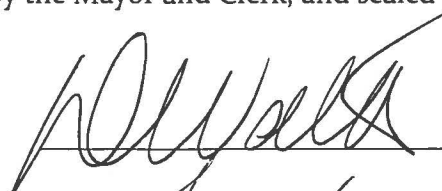
PASSED SECOND READING on the 11th day of June, 2012.

PASSED THIRD READING on the 11th day of June, 2012.

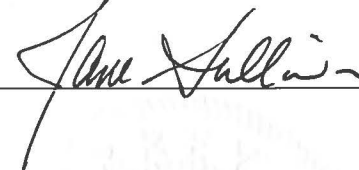
NOTICE OF INTENTION

ADVERTISED on the 14th day and 21st day of June, 2012 in the SURREY/NORTH DELTA LEADER and PEACE ARCH NEWS newspapers.

RECONSIDERED AND FINALLY ADOPTED, signed by the Mayor and Clerk, and sealed with the Corporate Seal on the 25th day of June, 2012.

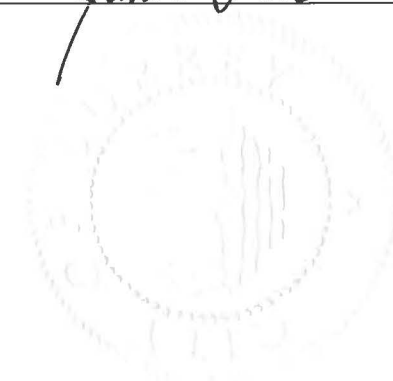


MAYOR



CLERK

h:\by-laws\adopted bylaws\2012\byl 17679.docx
L 7/4/12 2:24 PM



REFERENCE PLAN TO ACCOMPANY
CITY OF SURREY HIGHWAY DEDICATION CANCELLATION
BYLAW 17679 OF PORTIONS OF
SECTION 9, TOWNSHIP 8, NEW WESTMINSTER DISTRICT, DEDICATED
ROAD ON PLAN BCP 5215 AND A PORTION
OF SECTION 16, TOWNSHIP 8, NEW WESTMINSTER DISTRICT,
DEDICATED ROAD ON PLAN 1372

PLAN BCP 51216

DEPOSITED IN THE LAND TITLE OFFICE
AT NEW WESTMINSTER, B.C.
ON THE 2 DAY OF AUG. 2012.

L. Blaschuk
REGISTRAR

NO. 156-1955-7-2

PURSUANT TO SECTION 120 OF THE LAND TITLE ACT AND SECTION 40 OF THE COMMUNITY CHARTER
B.C.G.S. 926.017



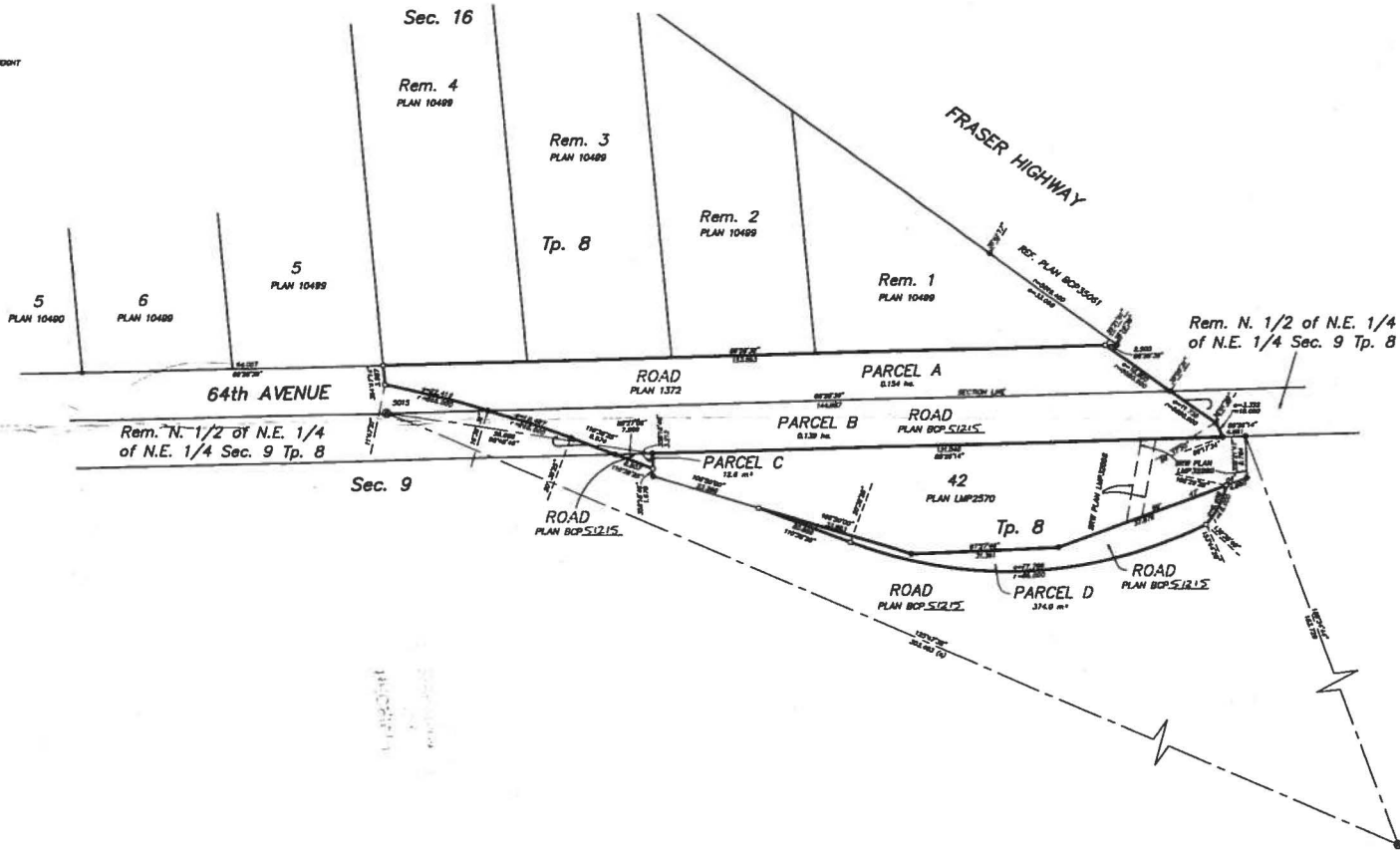
ALL DISTANCES ARE IN METRES
THE INTENDED PLOT SIZE OF THIS PLAN IS 84mm IN WIDTH BY 300mm IN HEIGHT
(3 SIZE) WHEN PLOTTED AT A SCALE OF 1:500

LEGEND:

- ⊙ INDICATES CONTROL MONUMENT FOUND
- INDICATES STANDARD IRON PILE FOUND
- INDICATES STANDARD IRON PILE PLACED

INTERMEDIATE SURVEY AREA No. 1, CITY OF SURREY, ZONES (C382)
GRID BEARINGS ARE DERIVED FROM OBSERVATIONS BETWEEN
GEODETIC CONTROL MONUMENTS 5815 AND 5841

THIS PLAN SHOWS HORIZONTAL GROUND-LEVEL DISTANCES
UNLESS OTHERWISE SPECIFIED. TO COMPUTE GRID DISTANCES
MULTIPLY GROUND-LEVEL DISTANCES BY THE AVERAGE COSINE
FACTOR OF 0.9999989 WHICH HAS BEEN DERIVED FROM 5015 AND 5841



CITY OF SURREY
MAYOR: DAMIAN MITTS
CITY CLERK: JANE SALAMON
WITNESS AS TO SIGNATURE OF THE CITY CLERK
ADDRESS OF WITNESS
OCCUPATION OF WITNESS

BOOK OF REFERENCE		
PARCEL	LEGAL DESCRIPTION	AREA
A	PART OF SEC. 16, T.P. 8, SHOWN DEDICATED AS ROAD ON PLAN 1372, N.E.S. 1/4	0.154 ha
B	PART OF SEC. 9, T.P. 8, SHOWN DEDICATED AS ROAD ON PLAN BCP 5215, N.E.S. 1/4	0.139 ha
C	PART OF SEC. 9, T.P. 8, SHOWN DEDICATED AS ROAD ON PLAN BCP 5215, S.E.S. 1/4	12.6 m ²
D	PART OF SEC. 9, T.P. 8, SHOWN DEDICATED AS ROAD ON PLAN BCP 5215, S.E.S. 1/4	374.6 m ²

MURRAY & ASSOCIATES
201-1244A, 82nd AVENUE
SURREY, B.C.
SURREY, B.C.
SURREY, B.C.
SURREY, B.C.

THIS PLAN LIES WITHIN THE GREATER VANCOUVER REGIONAL DISTRICT
(CITY OF SURREY)

I, GREGORY MARSTON, A BRITISH COLUMBIA LAND SURVEYOR,
CERTIFY THAT I WAS PRESENT AT AND PERSONALLY SUPERVISED
THE SURVEY REPRESENTED BY THIS PLAN AND THAT THE SURVEY
AND PLAN ARE CORRECT. THE FIELD SURVEY WAS COMPLETED ON
THE 30 DAY OF MAY, 2012. THE PLAN WAS COMPLETED AND CHECKED,
AND THE CHECKLIST FILED UNDER #136726 ON THE 30TH DAY OF MAY, 2012.

G. Marston

FILE 0391-06