

CITY OF SURREY

BY-LAW NO. 17957

A By-law to close and to remove the dedication  
of a highway of a portion of road

.....

WHEREAS pursuant to Subsection 40(1)(a) of the *Community Charter*, S.B.C. 2003, c. 26, the Council may, by by-law, close all or part of a highway that is vested in the municipality to all or some types of traffic;

AND WHEREAS pursuant to Section 40(2) of the *Community Charter*, S.B.C. 2003, c. 26, the Council may, by by-law, remove the dedication of a highway that has been closed by a by-law under Subsection 40(1)(a).

NOW THEREFORE the Council of the City of Surrey, ENACTS as follows:

1. That portion of Block 7 District Lot 6 Group 2, New Westminster District dedicated as Road and shown outlined in heavy black line on Reference Plan 1952 attached hereto, prepared by Robert J. Glass, BCLS, on the 11th day of July, 2013 and described as follows:

That portion of Road dedicated by Plan 1952 and Plan EPP32619 called Parcel 1 containing 306.6 square metres; and

That portion of Road dedicated by Plan 1952 and Plan EPP32619 called Parcel 2 containing 560.0 square metres; and

That portion of Road dedicated by Plan 1952 and Plan EPP32619 called Parcel 3 containing 229.9 square metres.

(hereinafter referred to as that portion of Road)

shall be closed to traffic.

2. The dedication as highway be removed of said portion of Road.
3. This By-law may be cited for all purposes as "Surrey Close and Remove the Dedication of Highway of a Portion of Road Adjacent to 10790, 10798 and 10804 Timberland Road, By-law, 2013, No. 17957"

PASSED FIRST READING on the 22nd day of July, 2013.

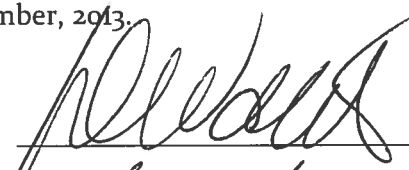
PASSED SECOND READING on the 22nd day of July, 2013.

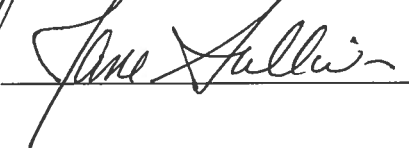
PASSED THIRD READING on the 22nd day of July, 2013.

NOTICE OF INTENTION ADVERTISED on the 29th day of August and the 5th day of September, 2013 in the SURREY/NORTH DELTA LEADER and PEACE ARCH NEWS newspapers.

RECEIVED APPROVAL FROM THE MINISTRY OF TRANSPORTATION AND INFRASTRUCTURE on the 13th day of August, 2013.

RECONSIDERED AND FINALLY ADOPTED, signed by the Mayor and Clerk, and sealed with the Corporate Seal on the 9th day of September, 2013.

  
\_\_\_\_\_  
MAYOR

  
\_\_\_\_\_  
CLERK



REFERENCE PLAN TO ACCOMPANY CITY OF SURREY HIGHWAY  
 DEDICATION CANCELLATION BYLAW No 17957 OF A PORTION OF ROAD  
 LYING IN BLOCK 7 DISTRICT LOT 6 GROUP 2 DEDICATED BY PLAN 1952  
 NEW WESTMINSTER DISTRICT  
 BCGS 92G.016/026

PLAN EPP32619

PURSUANT TO SECTION 120, LAND TITLE ACT  
 PURSUANT TO SECTION 40, COMMUNITY CHARTER

LEGEND

- ⊙ CONTROL POINT
- CONTROL POINT
- CONTROL POINT
- CONTROL POINT
- CONTROL POINT

NOTE: THIS PLAN SHOWS ONE OR MORE CONTROL POINTS WHICH ARE NOT SET ON THE TRUE CORNER.

SCALE 1:500

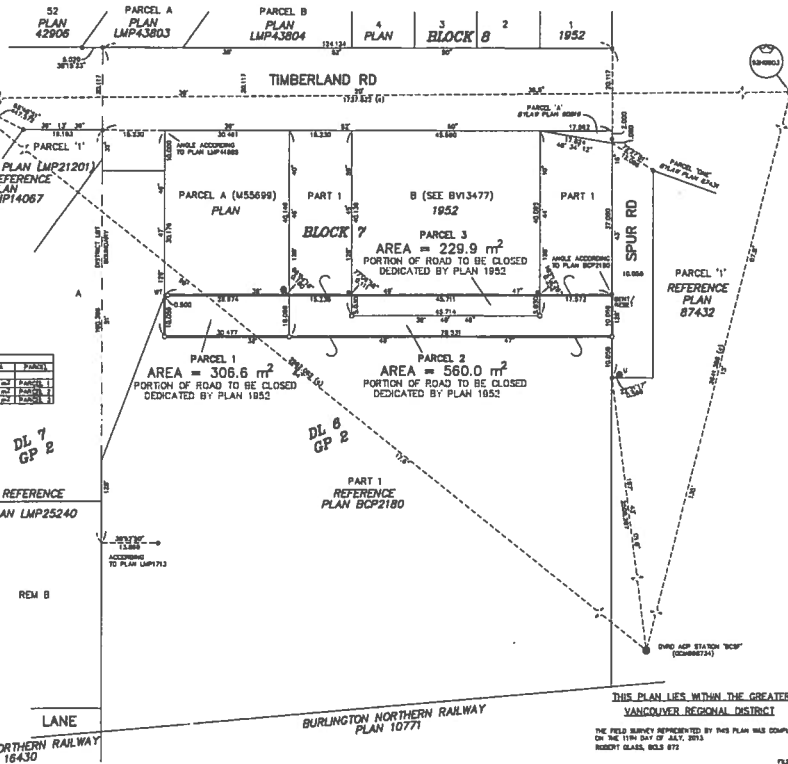
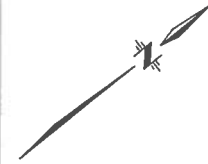
ALL DISTANCES ARE IN METERS  
 THE INTENDED PLOT SIZE OF THIS PLAN IS  
 SHOWN IN RED BY 42MM IN HEIGHT  
 TO SEE SHEETS WHICH PLATED AT A SCALE OF 1:500

INTEGRATED SURVEY AREA NO. 1, SURREY, HADLEY (CDS)

SPD BEARINGS ARE DERIVED FROM DUAL FREQUENCY PHASE GPS  
 OBSERVATIONS BETWEEN GEODETIC CONTROL MONUMENTS SP-3004  
 AND DWD ADP STATION "BCSP" (CDM888724)

THIS PLAN SHOWS HORIZONTAL, GROUND-LEVEL DISTANCES UNLESS  
 OTHERWISE SPECIFIED TO COMPUTE ONE DISTANCE, ALL OTHER  
 GROUND-LEVEL DISTANCES BY THE AVERAGE CORRECTION FACTOR 0.999952  
 WHICH HAS BEEN DERIVED FROM SB9003 AND 930004.

BOOK OF REFERENCE	AREA	PARTIAL
PLAN 1952	308.6	1
PLAN 1952	229.9	1
PLAN 1952	560.0	1



CITY OF SURREY  
 SURVEY SECTION  
 1436 - 88 AVE.  
 SURREY, B.C. V3R 3A2  
 TEL: (604) 881-1233  
 FAX: (604) 881-0883

THIS PLAN LIES WITHIN THE GREATER  
 VANCOUVER REGIONAL DISTRICT  
 THE FIELD SURVEY REPRESENTED BY THIS PLAN WAS COMPLETED  
 ON THE 11TH DAY OF JULY, 2013  
 REGISTRY CLASS, 92G.016/026  
 FILE: 20864