

CITY OF SURREY

BY-LAW NO. 17960

A by-law to close Park dedicated by a Subdivision Plan in
the City of Surrey.

.....

WHEREAS pursuant to Section 27 of the *Community Charter*, SBC, 2003, c. 26, as amended, the Council of the City of Surrey may by by-law dispose of all or part of dedicated parkland vested in a municipality provided that the proceeds of the disposal are to be placed to the credit of the park land acquisition reserve fund.

NOW, THEREFORE, the Council of the City of Surrey, ENACTS AS FOLLOWS:

1. The Council hereby authorizes the disposal of all that portion of park dedicated by Plan BCP 32045 lying in Section 4 Township 8 New Westminster District shown outlined in heavy black line on reference plan EPP31539 attached hereto, prepared by Montgomery C. Brisson, B.C.L.S. on the 7th day of June, 2013, and described as follows:

That portion of park containing 1,460 square metres and called Parcel A.

2. The Council hereby authorizes that instead of taking land in exchange of the park disposal, the proceeds of the disposal be placed to the credit of the reserve fund established under Section 188 of the *Community Charter*, SBC, 2003, c. 26, as amended, for the purpose of acquiring park lands.
3. As required by Section 84 of the *Community Charter*, SBC, 2003, c. 26, as amended, an alternative approval process was provided in accordance with Section 86.
4. This By-law may be cited as "Surrey Park Closure By-law, 2013, No. 17960"

PASSED FIRST READING on the 8th day of July, 2013.

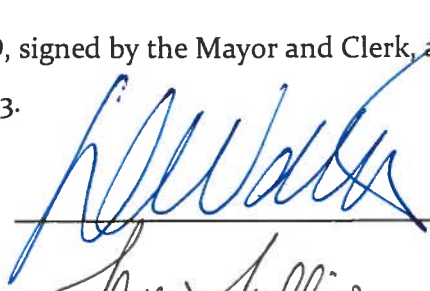
PASSED SECOND READING on the 8th day of July, 2013.

PASSED THIRD READING on the 8th day of July, 2013.

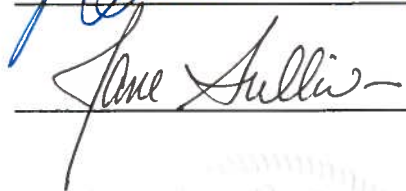
NOTICE OF INTENTION ADVERTISED in the SURREY LEADER AND PEACE ARCH NEWS on the 18th and 25th day of July, 2013.

RECEIVED APPROVAL OF THE ELECTORS on the 24th day of August, 2013.

RECONSIDERED AND FINALLY ADOPTED, signed by the Mayor and Clerk, and sealed with the Corporate Seal on 9th day of September, 2013.



MAYOR



CLERK



REFERENCE PLAN TO ACCOMPANY CITY OF SURREY PARK CLOSING BYLAW NUMBER 17960
 OF A PORTION OF PARK LYING IN SECTION 4 TOWNSHIP 8
 NEW WESTMINSTER DISTRICT DEDICATED PARK BY PLAN BCP32045

PLAN EPP31539

BCGS 92G.007 & 017
 PURSUANT TO SECTION 120, LAND TITLE ACT
 PURSUANT TO SECTION 27, COMMUNITY CHARTER

LEGEND

- ⊙ GEODETIC CONTROL, WORKMANS POINT
- ⊙ GEODETIC STANDARD HIGH POINT PLUMB
- ⊙ GEODETIC STANDARD HIGH POINT SET
- ⊙ GEODETIC HIGH ENDICING POINT

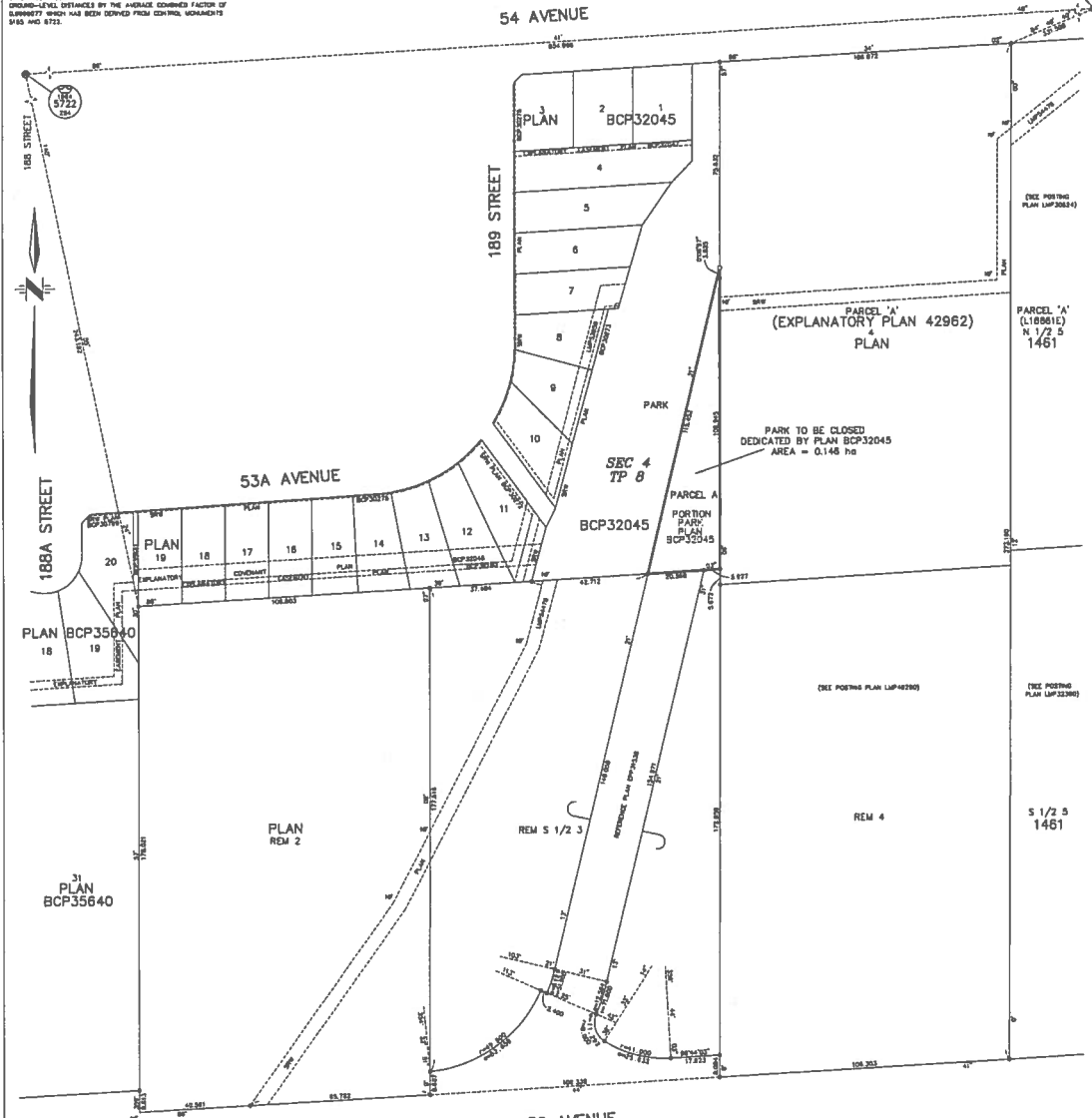


ALL DISTANCES ARE IN METRES
 THE EXTENDED PLAT SIZE OF THIS PLAN IS
 300mm BY 600mm BY 300mm BY 300mm
 (SEE D SIZE SHEET) WHEN PLOTTED AT A SCALE OF 1:1250

INTERMEDIATE SURVEY AREA NO. 1, SURREY, MADA83 (CORS)

GRID BEARINGS ARE DERIVED FROM OBSERVATIONS BETWEEN
 GEODETIC CONTROL, WORKMANS POINTS 5168 AND 5722.

THIS PLAN SHOWS HORIZONTAL, GROUND-LEVEL DISTANCES UNLESS
 OTHERWISE SPECIFIED. TO COMPUTE CURVE DISTANCES, USE ONLY
 GROUND-LEVEL DISTANCES BY THE AVERAGE CORRECTION FACTOR OF
 SURVEYING WHICH HAS BEEN DERIVED FROM CONTROL, WORKMANS
 POINTS 5168 AND 5722.



CITY OF SURREY
 SURVEY SECTION
 14340 - 56 AVE.
 SURREY, B.C. V3R 5A2
 TEL: (604) 591-4533
 FAX: (604) 591-4555

THIS PLAN LIES WITHIN THE GREATER
 VANCOUVER REGIONAL DISTRICT
 THE FIELD SURVEY REPRESENTED BY THIS PLAN WAS COMPLETED ON
 THE 7th DAY OF JUNE, 2015
 MONROE C. BRIDSON, BCLS
 5287222-040