

CITY OF SURREY

BY-LAW NO. 17998

A by-law to amend "Surrey Zoning By-law, 1993, No. 12000," as amended.
.....

The Council of the City of Surrey ENACTS AS FOLLOWS:

1. Surrey Zoning By-law, 1993, No. 12000, as amended, is hereby further amended pursuant to the provisions of Section 903 of the *Local Government Act*, R.S.B.C. 1996, c.323, as amended, by changing the classification of the following parcels of land, presently shown upon the maps designated as the Zoning Maps and marked as Schedule "A" under Part 3 of Surrey Zoning By-law, 1993, No. 12000, as amended, as follows:

FROM: ONE-ACRE RESIDENTIAL ZONE (RA)
TO: SEMI-DETACHED RESIDENTIAL ZONE (RF-SD)

Shown on a Survey Plan attached hereto and forming part of this By-law as Schedule A, certified correct by G.A. Rowbotham Hol, B.C.L.S. on the 21st day of June, 2013, and more particularly described as follows:

Portion of Parcel Identifier: 004-109-031

Lot 2 Section 13 Township 1 New Westminster District Plan 71775 containing 597.6m called Block A

(Portion of 2172 - 165 Street)

FROM: ONE-ACRE RESIDENTIAL ZONE (RA)
TO: SINGLE FAMILY RESIDENTIAL (9) ZONE (RF-9)

Portion of Parcel Identifier: 004-109-031

Lot 2 Section 13 Township 1 New Westminster District Plan 71775 containing 2.093ha called Block B

(Portion of 2172 - 165 Street)

FROM: ONE-ACRE RESIDENTIAL ZONE (RA)
TO: SINGLE FAMILY RESIDENTIAL (12) ZONE (RF-12)

Portion of Parcel Identifier: 004-109-031

Lot 2 Section 13 Township 1 New Westminster District Plan 71775 containing 0.134ha called Block C

(Portion of 2172 - 165 Street)

2. This By-law shall be cited for all purposes as "Surrey Zoning By-law, 1993, No. 12000, Amendment By-law, 2013, No. 17998"

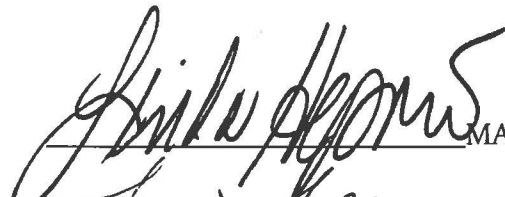
PASSED FIRST READING on the 8th day of July, 2013.

PASSED SECOND READING on the 8th day of July, 2013.

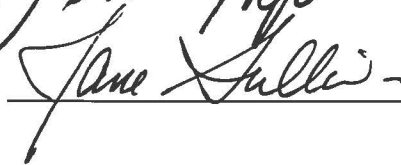
PUBLIC HEARING HELD thereon on the 22nd day of July, 2013.

PASSED THIRD READING on the 22nd day of July, 2013.

RECONSIDERED AND FINALLY ADOPTED, signed by the Mayor and Clerk, and sealed with the Corporate Seal on the 7th day of March, 2016.



MAYOR



CLERK

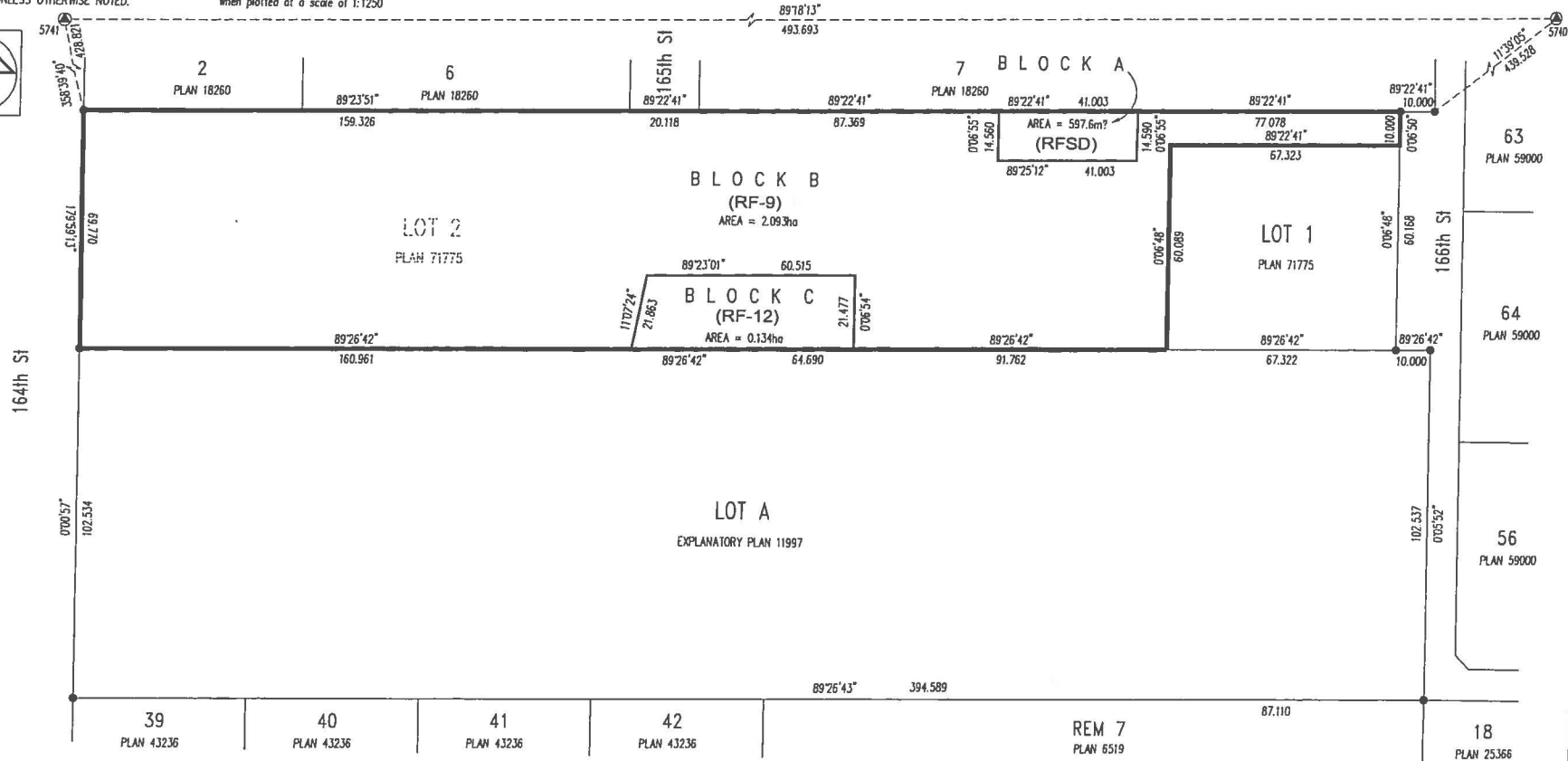
h:\clerks\by-laws\bylaw library\adopted\17000\17998\byl 17998.docx

SURVEY PLAN TO ACCOMPANY CITY OF SURREY REZONING BYLAW _____ OF:
 LOT 2 SECTION 13 TOWNSHIP 1 NEW WESTMINSTER DISTRICT PLAN 71775



ALL DISTANCES ARE IN METRES AND DECIMALS THEREOF UNLESS OTHERWISE NOTED.

The intended plot size of this plan is 432mm in width by 280mm in height (B Size) when plotted at a scale of 1:1250



GRID BEARINGS ARE DERIVED FROM OLD CONTROL MONUMENTS 5740 AND 5741

LEGEND

- INDICATES OLD IRON POST FOUND
- INDICATES OLD CONTROL MONUMENT FOUND
- ha. HECTARES

THIS PLAN SHOWS HORIZONTAL GROUND LEVEL MEASURED DISTANCES EXCEPT WHERE OTHERWISE NOTED. TO COMPUTE GRID DISTANCES, MULTIPLY GROUND LEVEL DISTANCES BY THE COMBINED FACTOR 0.9995906

G.A. Rowbottom
 CERTIFIED CORRECT
 Dated this 21st day of JUNE, 2013
 THIS DOCUMENT IS NOT VALID UNLESS ORIGINALLY SIGNED AND SEALED. ©