

CITY OF SURREY

BYLAW NO. 18048

A Bylaw to close and to remove the dedication
of a highway of a portion of road
.....

WHEREAS pursuant to Subsection 40(1)(a) of the *Community Charter*, S.B.C. 2003, c. 26, the Council may, by bylaw, close all or part of a highway that is vested in the municipality to all or some types of traffic;

AND WHEREAS pursuant to Section 40(2) of the *Community Charter*, S.B.C. 2003, c. 26, the Council may, by bylaw, remove the dedication of a highway that has been closed by a bylaw under Subsection 40(1)(a).

NOW THEREFORE the Council of the City of Surrey, ENACTS as follows:

1. That portion of Section 22 Block 5 North, Range 2 West, New Westminster District dedicated as Road and shown hatched and outlined in heavy black line on Reference Plan attached hereto, duly signed by the Mayor and Clerk, prepared by Mike E. Shaw, BCLS, on the 17th day of July, 2012 and described as follows:

That portion of Road dedicated by Plan 64483 containing 89.8 square metres

(hereinafter referred to as that portion of Road)

shall be closed to traffic.

2. The dedication as highway be removed of said portion of Road.
3. This Bylaw may be cited for all purposes as "Surrey Close and Remove the Dedication of Highway of a Portion of Road Adjacent to 13430 and 13440 - 105 Avenue, Bylaw, 2013, No. 18048"

PASSED FIRST READING on the 9th day of September, 2013.

PASSED SECOND READING on the 9th day of September, 2013.

PASSED THIRD READING on the 9th day of September, 2013.

NOTICE OF INTENTION ADVERTISED on the 12th and 19th day of September, 2013 in the SURREY/NORTH DELTA LEADER and PEACE ARCH NEWS newspapers.

RECONSIDERED AND FINALLY ADOPTED, signed by the Mayor and Clerk, and sealed with the Corporate Seal on the 23rd day of September, 2013.


MAYOR


CLERK

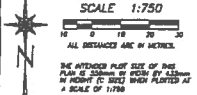


REFERENCE PLAN TO ACCOMPANY THE CITY OF SURREY ROAD CLOSING AND REMOVAL OF ROAD DEDICATION BYLAW No. OF A PORTION OF LANE DEDICATED BY PLAN 64483, SECTION 22, BLOCK 5 NORTH, RANGE 2 WEST, N.W.D.

PLAN BCP

PURSUANT TO SECTION 120, L.T.A. AND SECTION 40, COMMUNITY CHARTER B.C.G.S. 926.016

DEPOSITED IN THE LAND TITLE OFFICE AT NEW WESTMINSTER, B.C. THIS _____ DAY OF _____



INTEGRATED SURVEY AREA No. 1 (SURREY) MAD-83 (CSRS)

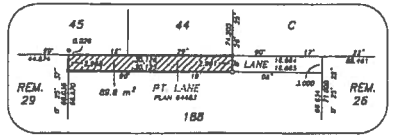
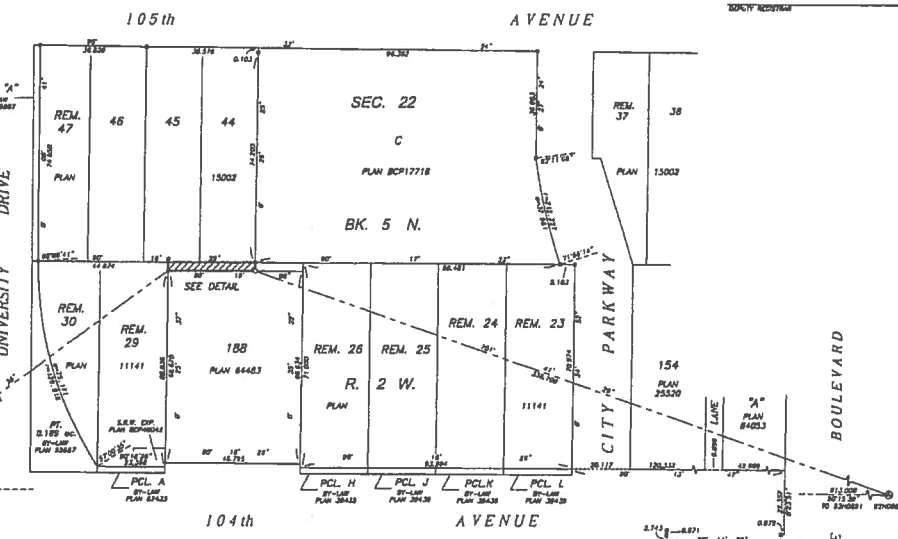
THIS PLAN SHOWS HORIZONTAL, VERTICAL, LEVEL, DISTANCES, ANGLES, GRADIENTS, SLOPES, TO CURVES AND DISTANCES, SLOPES, LEVEL, DISTANCES BY THE LATEST COMBINED FACTORS OF SURVEYING TECHNIQUE FROM CONTROL, MONUMENTS, REVISIONS AND EVIDENCE.

- LEGEND**
- - EXISTING CONTROL MONUMENT FOUND
 - - EXISTING STRONGHOLD FROM POST FOUND
 - - EXISTING LEAD PLUM FOUND
 - - EXISTING EXHIBIT FROM POST PLACED
 - - EXISTING LEAD PLUM PLACED
 - HP - EXISTING HOLES
 - ▨ - EXISTING PORTION OF LANE TO BE CLOSED

THIS PLAN SHOWS ONE OR MORE BENCH MARKS WHICH ARE NOT SET ON THE TRUE CORNERS AND ARE SET ALONG THE PRODUCTION OF THE PROPERTY BOUNDARY LINES OTHERWISE NOTED.

I, WALTER C. SHAW, A BIRTH COLLEGE LAND SURVEYOR, CERTIFY THAT I WAS PRESENT AT AND PERSONALLY SUPERVISED THE SURVEY REPRESENTED BY THIS PLAN AND THE SURVEY AND PLAN ARE CORRECT. THE FIELD SURVEY WAS COMPLETED ON THE 12TH DAY OF JULY, 2012. THIS PLAN AND SURVEY ARE CORRECT AND THE DISTANCES, PLUM FOUND, SLOPES, ANGLES AND GRADES AND THE DISTANCES, PLUM FOUND, SLOPES, ANGLES AND GRADES ARE CORRECT.

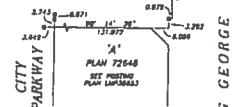
WALTER C. SHAW S.L.S.
BENNETT LAND SURVEYING LTD.
P.L.C. A CORPUS LAND SURVEYORS
CORPORATE S.L.S. OF THE
PROVINCIAL SOCIETY OF B.C.
PHONE: 1-800-465-6717
DRAFTED: J. 2012-0-4
FILE: J. 2012-0-4
DATE: JULY 21, 2012



DETAIL
NOT TO SCALE

THIS PLAN LIES WITHIN THE GREATER VANCOUVER REGIONAL DISTRICT

THE CITY OF SURREY
TOWN:
WARD:
WARRANT AS TO BIRTH RECORDS
DEPARTMENT OF SURVEY
ADDRESS OF WITNESS



PLAN 72648
SEE POSTING PLAN 64053