

CITY OF SURREY

BYLAW NO. 18071

A Bylaw to close and to remove the dedication
of a highway of a portion of road

.....

As amended by By-law No: 18101, 11/25/13

THIS IS A CONSOLIDATED BY-LAW PREPARED BY THE CITY OF SURREY FOR CONVENIENCE ONLY. THE CITY DOES NOT WARRANT THAT THE INFORMATION CONTAINED IN THIS CONSOLIDATION IS CURRENT. IT IS THE RESPONSIBILITY OF THE PERSON USING THIS CONSOLIDATION TO ENSURE THAT IT ACCURATELY REFLECTS CURRENT BY-LAW PROVISIONS.

WHEREAS pursuant to Subsection 40(1)(a) of the *Community Charter*, S.B.C. 2003, c. 26, the Council may, by bylaw, close all or part of a highway that is vested in the municipality to all or some types of traffic;

AND WHEREAS pursuant to Section 40(2) of the *Community Charter*, S.B.C. 2003, c. 26, the Council may, by bylaw, remove the dedication of a highway that has been closed by a bylaw under Subsection 40(1)(a).

NOW THEREFORE the Council of the City of Surrey, ENACTS as follows:

1. That portion of Section 8 Township 2 New Westminster District dedicated as Road and shown outlined in heavy black line on Reference Plan EPP 34157 attached hereto, prepared by John Onderwater, BCLS, on the 10th day of September, 2013 and described as follows:

That portion of Road dedicated by Plan 68798 and Plan EPP34157 called Parcel 1 containing 516.6 square metres; and

That portion of Road dedicated by Plan 63551 and Plan EPP34157 called Parcel 2 containing 22.6 square metres; and

(hereinafter referred to as that portion of Road)

shall be closed to traffic.

2. The dedication as highway be removed of said portion of Road.

3. This Bylaw may be cited for all purposes as "Surrey Close and Remove the Dedication of Highway of a Portion of Road Adjacent to 6321 King George Boulevard, Bylaw, 2013, No. 18071"

PASSED FIRST READING on the 23rd day of September, 2013.

PASSED SECOND READING on the 23rd day of September, 2013.

PASSED THIRD READING on the 23rd day of September, 2013.

NOTICE OF INTENTION ADVERTISED on the 26th day of September and the 3rd day of October, 2013 in the SURREY/NORTH DELTA LEADER and PEACE ARCH NEWS newspapers.

RECONSIDERED AND FINALLY ADOPTED, signed by the Mayor and Clerk, and sealed with the Corporate Seal on the 7th day of October, 2013.

_____ MAYOR

_____ CLERK

REFERENCE PLAN TO ACCOMPANY CITY OF SURREY ROAD CLOSURE AND CANCELLATION BYLAW NO. 18071 OF PARTS OF ROAD DEDICATED BY STATUTORY RIGHT OF WAY PLAN 63551 AND PLAN 68798 SECTION 8 TOWNSHIP 2 NEW WESTMINSTER DISTRICT.

PLAN EPP34157

PURSUANT TO SECTION 180 OF THE LAND TITLE ACT
PURSUANT TO SECTION 40 OF THE COMMUNITY CHARTER
BCLC 820.016

All Distances are in Metres.
The intended plot size of this plan is 560mm in width by 432mm in height (C size) when plotted at a scale of 1:500

LEGEND:
 ● Denotes Control Monument found.
 ● Denotes Standard Iron Post found.
 ○ Denotes Standard Iron Post placed.



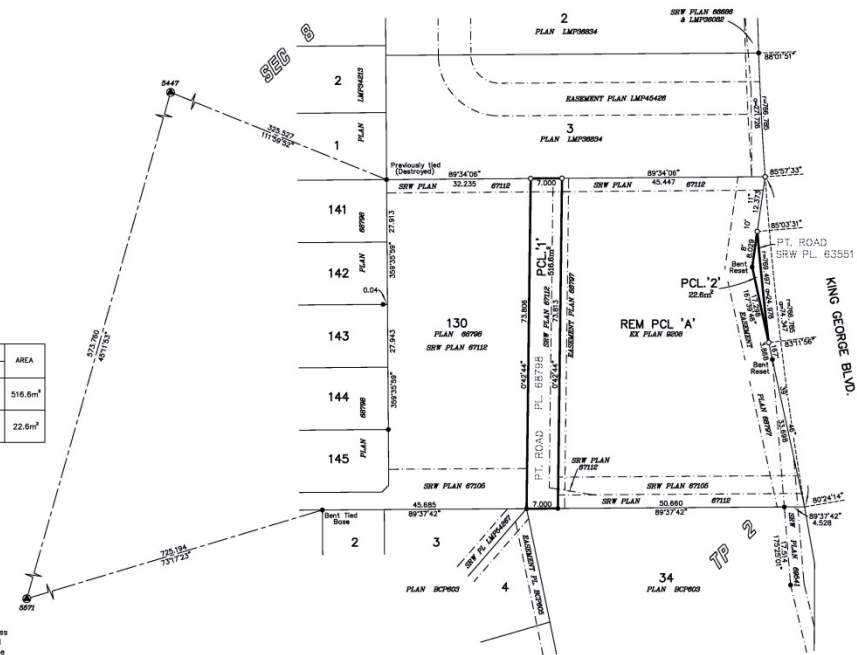
BOOK OF REFERENCE	AREA
LEGAL DESCRIPTION	
ROAD BEING CLOSED SHOWN IN HEAVY OUTLINE AND AS PARCELS 1, ROAD IN SECTION 8, TOWNSHIP 2, DEDICATED BY PLAN 68798	516.6m ²
ROAD BEING CLOSED SHOWN IN HEAVY OUTLINE AND AS PARCELS 2, ROAD IN SECTION 8, TOWNSHIP 2, DEDICATED BY SRW PLAN 63551	22.6m ²

Grid Bearings are derived from observations between control monuments 5071 & 5447

Integrated Survey Area No. 1
City of Surrey, MALDEN (CSDS)

This plan shows horizontal ground level distances except where otherwise noted. To compute grid distances multiply ground-level distances by the average combined factor of 0.9995918 which has been derived from control monuments 5571 and 5447.

Underwater Land Surveying Ltd.
B.C. Land Surveyors
#04-8800 178A Street
Glenridge BC
FILE: 201060_PCL



This Plan Lies Within The Greater Vancouver Regional District

The field survey represented by this plan was completed on the 3rd day of September, 2013.
John P. Underwater, BCLC #708