

CITY OF SURREY

BYLAW NO. 18156

A Bylaw to close and to remove the dedication
of a highway of a portion of road

.....

WHEREAS pursuant to Subsection 40(1)(a) of the *Community Charter*, S.B.C. 2003, c. 26, the Council may, by bylaw, close all or part of a highway that is vested in the municipality to all or some types of traffic;

AND WHEREAS pursuant to Section 40(2) of the *Community Charter*, S.B.C. 2003, c. 26, the Council may, by bylaw, remove the dedication of a highway that has been closed by a bylaw under Subsection 40(1)(a).

NOW THEREFORE the Council of the City of Surrey, ENACTS as follows:

1. That portion of Section 16 Township 8 New Westminster District dedicated as Road and shown outlined in heavy black line on Reference Plan EPP36177 attached hereto, prepared by Gary A. Rowbotham, BCLS, on the 18th day of December, 2013 and described as follows:

That portion of Road dedicated by Plan 1342 called Parcel A containing 476.4 square metres; and

2. That portion of Section 15 Township 8 New Westminster District dedicated as Road and shown outlined in heavy black line on Reference Plan EPP36177 attached hereto, prepared by Gary A. Rowbotham, BCLS, on the 18th day of December, 2013 and described as follows:

That portion of Road dedicated by Plan 3794 called Parcel B containing 414.0 square metres; and

That portion of Road dedicated by Plan 31484 called Parcel C containing 80.4 square metres; and

That portion of Road dedicated by Plan EPP 36176 called Parcel D containing 4.5 square metres; and

That portion of Road dedicated by Plan EPP 36176 called Parcel E containing 25.6 square metres;

(hereinafter referred to as that portion of Road)

shall be closed to traffic.

3. The dedication as highway be removed of said portion of Road.
4. This Bylaw may be cited for all purposes as "Surrey Close and Remove the Dedication of Highway of a Portion of Road Adjacent to 6415 and 6469 – 192 Street and 19141, 19153 and 19169 Fraser Highway, Bylaw, 2014, No. 18156"


PASSED FIRST READING on the 13th day of January, 2014.

PASSED SECOND READING on the 13th day of January, 2014.

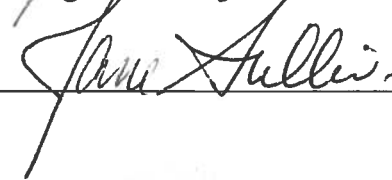
PASSED THIRD READING on the 13th day of January, 2014.

NOTICE OF INTENTION ADVERTISED on the 16th and the 23rd day of January, 2014 in the SURREY/NORTH DELTA LEADER and PEACE ARCH newspapers.

RECONSIDERED AND FINALLY ADOPTED, signed by the Mayor and Clerk, and sealed with the Corporate Seal on the 3rd day of February, 2014.



MAYOR



CLERK



REFERENCE PLAN TO ACCOMPANY CITY OF SURREY ROAD DEDICATION CANCELLATION BYLAW NO.18156
 TO CLOSE ROAD: PARCEL 'A' DEDICATED ON PLAN 1342, SECTION 16 TOWNSHIP 8, NEW WESTMINSTER DISTRICT;
 PARCEL 'B' DEDICATED ON PLAN 3794 PARCEL 'C' DEDICATED ON PLAN 31484 AND PARCELS 'D' AND 'E'
 DEDICATED ON PLAN EPP36176 OF SECTION 15 TOWNSHIP 8, NEW WESTMINSTER DISTRICT

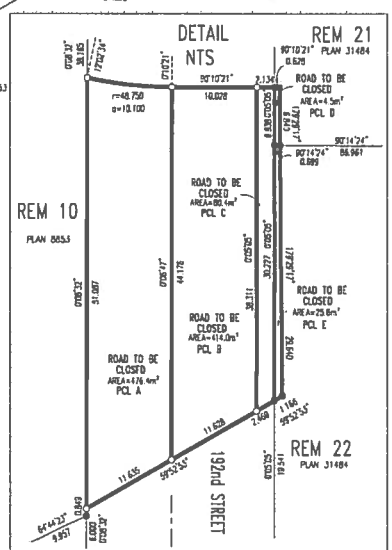
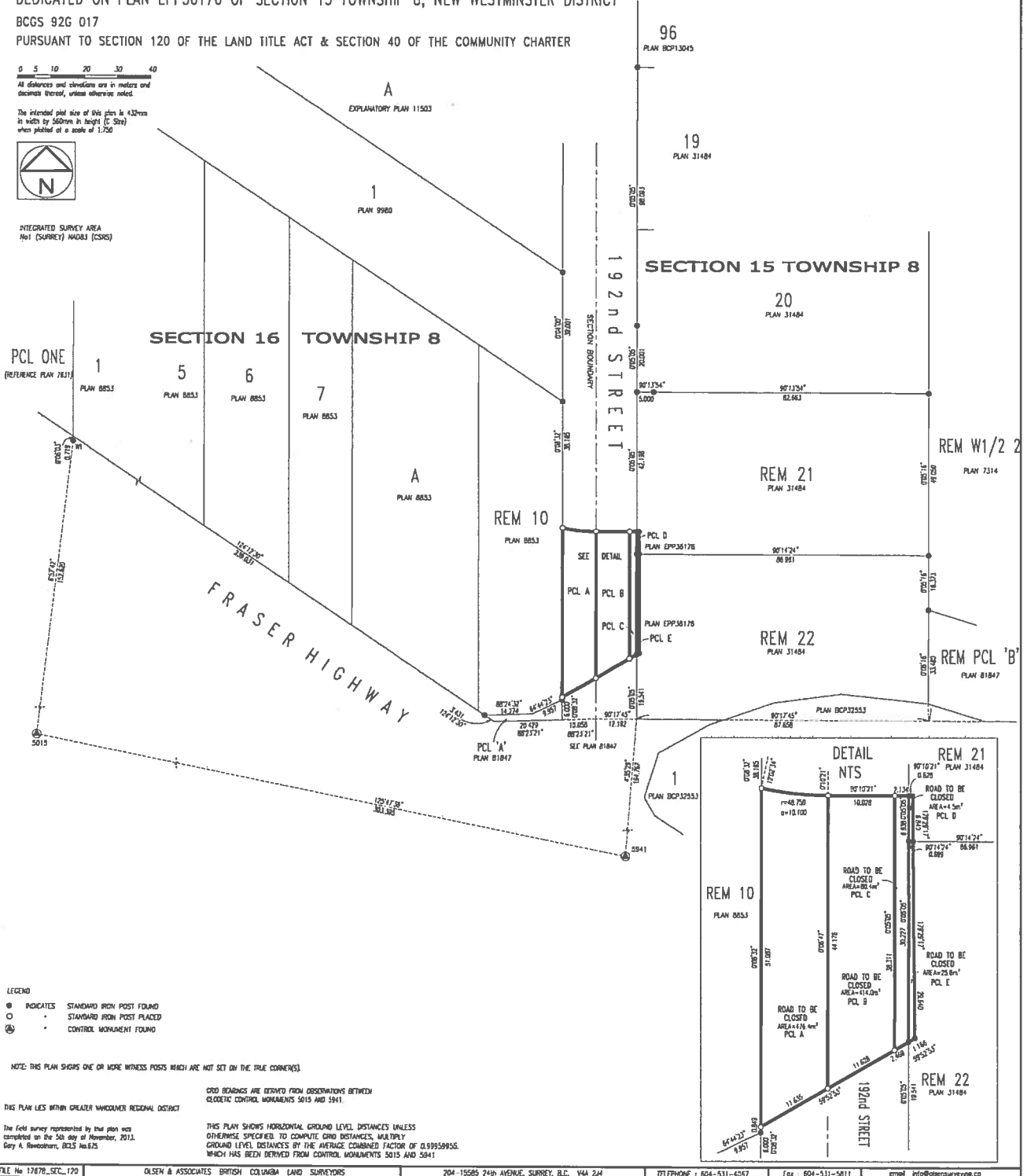
PLAN EPP36177

BCGS 92G 017
 PURSUANT TO SECTION 120 OF THE LAND TITLE ACT & SECTION 40 OF THE COMMUNITY CHARTER

0 5 10 20 30 40
 All distances and elevations are in meters and
 decimals thereof, unless otherwise noted.
 The intended plot size of this plan is 432mm
 in width by 560mm in height (C Size)
 when plotted at a scale of 1:750



INTEGRATED SURVEY AREA
 H01 (SURREY) MAG01 (CSRS)



LEGEND
 ● INDICATES STANDARD IRON POST FOUND
 ○ STANDARD IRON POST PLACED
 (M) CONTROL MONUMENT FOUND

NOTE: THIS PLAN SHOWS ONE OR MORE WITNESS POSTS WHICH ARE NOT SET ON THE TRUE CORNERS.
 GRID BEARINGS ARE DERIVED FROM OBSERVATIONS BETWEEN
 GEODETIC CONTROL MONUMENTS 5015 AND 5041.

THIS PLAN LIES WITHIN GREATER VANCOUVER REGIONAL DISTRICT
 THE FIELD SURVEY REPRESENTED BY THIS PLAN WAS
 COMPLETED ON THE 5th DAY OF NOVEMBER, 2011.
 GARY A. RHEINHART, B.C.S. No. 625
 THIS PLAN SHOWS HORIZONTAL GROUND LEVEL DISTANCES UNLESS
 OTHERWISE SPECIFIED. TO COMPUTE GRID DISTANCES, MULTIPLY
 GROUND LEVEL DISTANCES BY THE AVERAGE CORRECTION FACTOR OF 0.99959955,
 WHICH HAS BEEN DERIVED FROM CONTROL MONUMENTS 5015 AND 5041.