

CITY OF SURREY

BYLAW NO. 18181

A Bylaw to close and to remove the dedication
of a highway of a portion of road
.....

WHEREAS pursuant to Subsection 40(1)(a) of the *Community Charter*, S.B.C. 2003, c. 26, the Council may, by bylaw, close all or part of a highway that is vested in the municipality to all or some types of traffic;

AND WHEREAS pursuant to Section 40(2) of the *Community Charter*, S.B.C. 2003, c. 26, the Council may, by bylaw, remove the dedication of a highway that has been closed by a bylaw under Subsection 40(1)(a).

NOW THEREFORE the Council of the City of Surrey, ENACTS as follows:

1. That portion of Section 16 Township 8 New Westminster District dedicated as Road and shown outlined in heavy black line on Reference Plan EPP38764 attached hereto, prepared by Montgomery C. Brisson, BCLS, on the 26th day of February, 2014 and described as follows:

That portion of Road dedicated by Plan BCP 13662 called Parcel A containing 465.2 square metres;

(hereinafter referred to as that portion of Road)

shall be closed to traffic.

2. The dedication as highway be removed of said portion of Road.
3. This Bylaw may be cited for all purposes as "Surrey Close and Remove the Dedication of Highway of a Portion of Road Adjacent to 7124 – 190 Street, Bylaw, 2014, No. 18181"

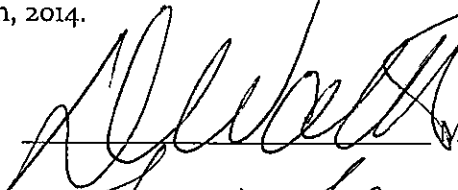
PASSED FIRST READING on the 10th day of March, 2014.

PASSED SECOND READING on the 10th day of March, 2014.

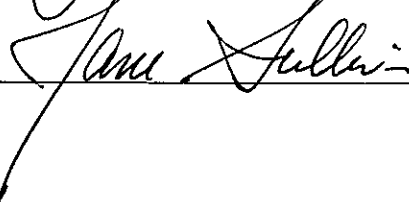
PASSED THIRD READING on the 10th day of March, 2014.

NOTICE OF INTENTION ADVERTISED on the 13th and the 20th day of March, 2014 in the SURREY/NORTH DELTA LEADER and PEACE ARCH newspapers.

RECONSIDERED AND FINALLY ADOPTED, signed by the Mayor and Clerk, and sealed with the Corporate Seal on the 31st day of March, 2014.



MAYOR



CLERK

REFERENCE PLAN TO ACCOMPANY CITY OF SURREY HIGHWAY DEDICATION CANCELLATION
 BYLAW NUMBER 18181 OF A PORTION OF ROAD LYING IN SECTION 16 TOWNSHIP 8
 NEW WESTMINSTER DISTRICT DEDICATED BY PLAN BCP13662

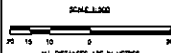
PLAN EPP38764

BCCS 926.017

PURSUANT TO SECTION 126, LAND TITLE ACT
 PURSUANT TO SECTION 49, COMMUNITY CHARTER

LEGEND

- (S) BOUNDARY CONTROL MONUMENT FOUND
- (*) BOUNDARY EVIDENCE MONUMENT FOUND
- (O) BOUNDARY MONUMENT FOUND WITH POST FOUND
- (X) BOUNDARY MONUMENT FOUND
- (D) BOUNDARY STAKE FOUND WITH POST SET
- (W) BOUNDARY MONUMENT FOUND

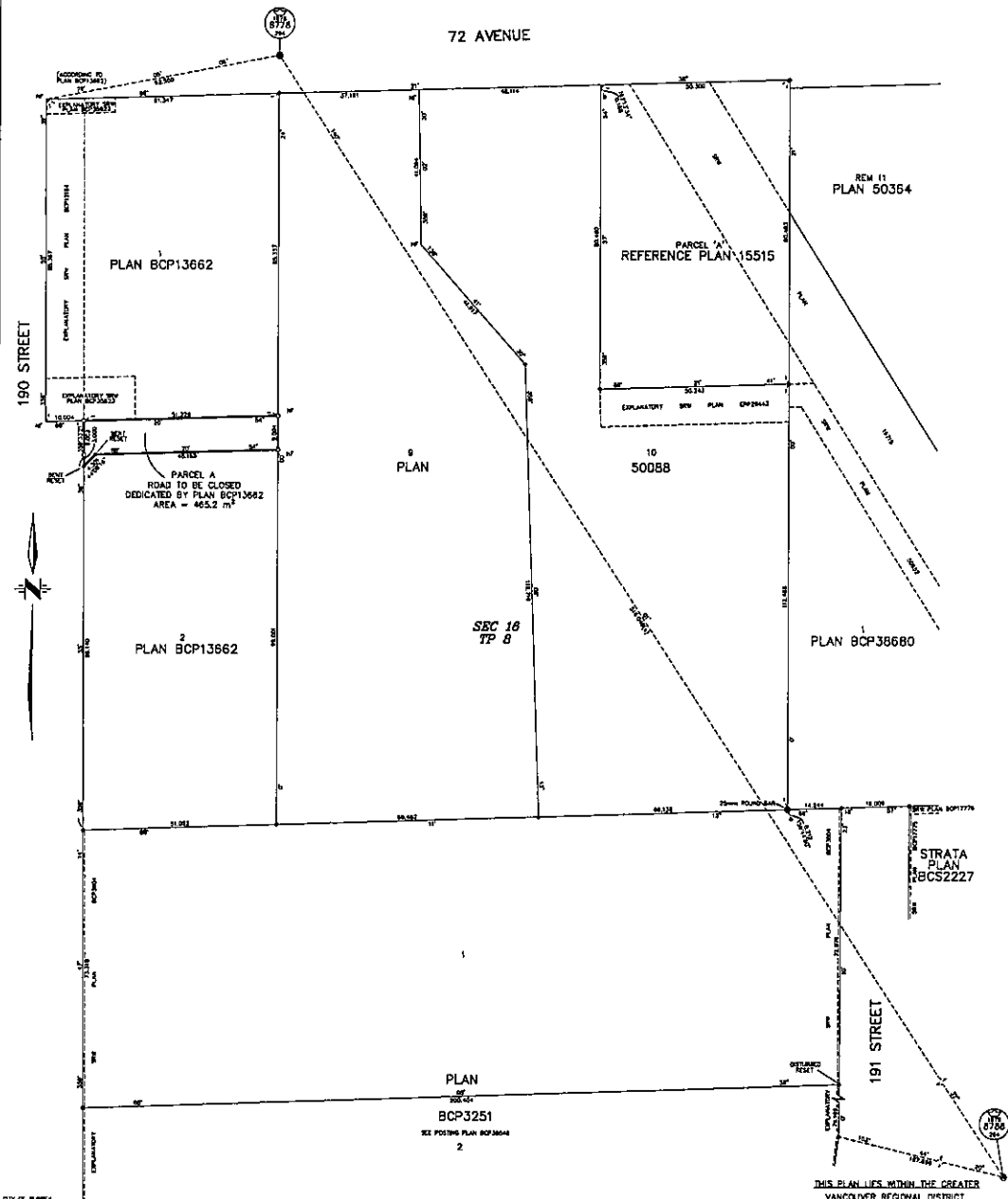


ALL DISTANCES ARE IN METERS
 THE HORIZONTAL PLATE OF THIS PLAN IS
 180° 00' 00" IN NORTH BY BEARING IN DEGREE
 (USE 0 FOR ZERO) WHEN PLOTTED AT A SCALE OF 1:3000

REGISTRAR SURVEY AREA NO. 1, SURVEY 34683 (1983)

ONLY BEARINGS ARE DERIVED FROM OBSERVATIONS BETWEEN
 SELECTED CONTROL MONUMENTS 8778 AND 8776

THIS PLAN SHOWS HORIZONTAL ORANGE-LEVEL DISTANCES UNLESS
 OTHERWISE SPECIFIED. TO COMPUTE ANG DISTANCES, MULTIPLY
 ORANGE-LEVEL DISTANCES BY THE ANGULAR CORRECTION FACTOR OF
 0.999999 WHICH HAS BEEN DERIVED FROM 8778 AND 8776.



CITY OF SURREY
 SURVEY SECTION
 13480 - 13510 AVE.
 SURREY, BC V3V 1K6
 TEL: (604) 261-4233
 FAX: (604) 261-3882

THIS PLAN LIES WITHIN THE GREATER
 VANCOUVER REGIONAL DISTRICT
 THE FIELD SURVEY REPRESENTED BY THIS PLAN WAS COMPLETED ON
 THE 28th DAY OF FEBRUARY, 2011.
 WPH DOORNEY C. BRIDSON, MILE 274

TERRACON