

CITY OF SURREY

BY-LAW NO. 18194

A By-law to close and to remove the dedication
of a highway of a portion of road
.....

WHEREAS pursuant to Subsection 40(1)(a) of the *Community Charter*, S.B.C. 2003, c. 26, the Council may, by by-law, close all or part of a highway that is vested in the municipality to all or some types of traffic;

AND WHEREAS pursuant to Section 40(2) of the *Community Charter*, S.B.C. 2003, c. 26, the Council may, by by-law, remove the dedication of a highway that has been closed by a by-law under Subsection 40(1)(a).

NOW THEREFORE the Council of the City of Surrey in open meeting assembled, ENACTS as follows:

1. That portion of Section 6, Township 2, New Westminster District dedicated as Road, shown outlined in heavy black line on Reference Plan EPP41135 attached hereto, prepared by Gene Nikula, BCLS, on the 23rd day of May, 2014 and described as follows:

That portion of Road, dedicated by Plan BCP7388, called Parcel A and containing 123.6 square metres.

(hereinafter referred to as that portion of Road)

shall be closed to traffic.

2. The dedication as highway be removed of said portions of Road.
3. This By-law may be cited for all purposes as "Surrey Close and Remove the Dedication of Highway of a Portion of Road Adjacent to 12465 – 55 Avenue, Bylaw, 2014, No. 18194".

PASSED FIRST READING on the 7th day of July, 2014.

PASSED SECOND READING on the 7th day of July, 2014.


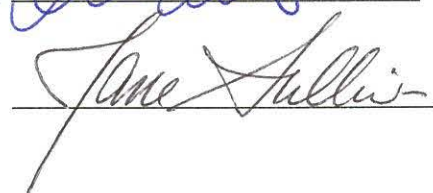
PASSED THIRD READING on the 7th day of July, 2014.

NOTICE OF INTENTION

ADVERTISED on the 10th and 17th day of July, 2014 in the SURREY/NORTH DELTA LEADER, and PEACE ARCH NEWS newspapers.

RECEIVED APPROVAL FROM THE MINISTRY OF TRANSPORTATION AND INFRASTRUCTURE on the 15th day of July, 2014.

RECONSIDERED AND FINALLY ADOPTED, signed by the Mayor and Clerk, and sealed with the Corporate Seal on the 21st day of July, 2014.

 _____ MAYOR
 _____ CLERK

REFERENCE PLAN TO ACCOMPANY THE CITY OF SURREY
 HIGHWAY DEDICATION CANCELLATION BYLAW NO. 18194
 COVERING ROAD SHOWN ON PLAN BCP7388, SECTION 6 TOWNSHIP 2
 NEW WESTMINSTER DISTRICT

PLAN EPP41135

PURSUANT TO SECTION 120 OF THE LAND TITLE ACT
 AND SECTION 40 OF THE COMMUNITY CHARTER

BCGS 926.006
 CITY OF SURREY
 SCALE 1:500



(All distances are in metres)

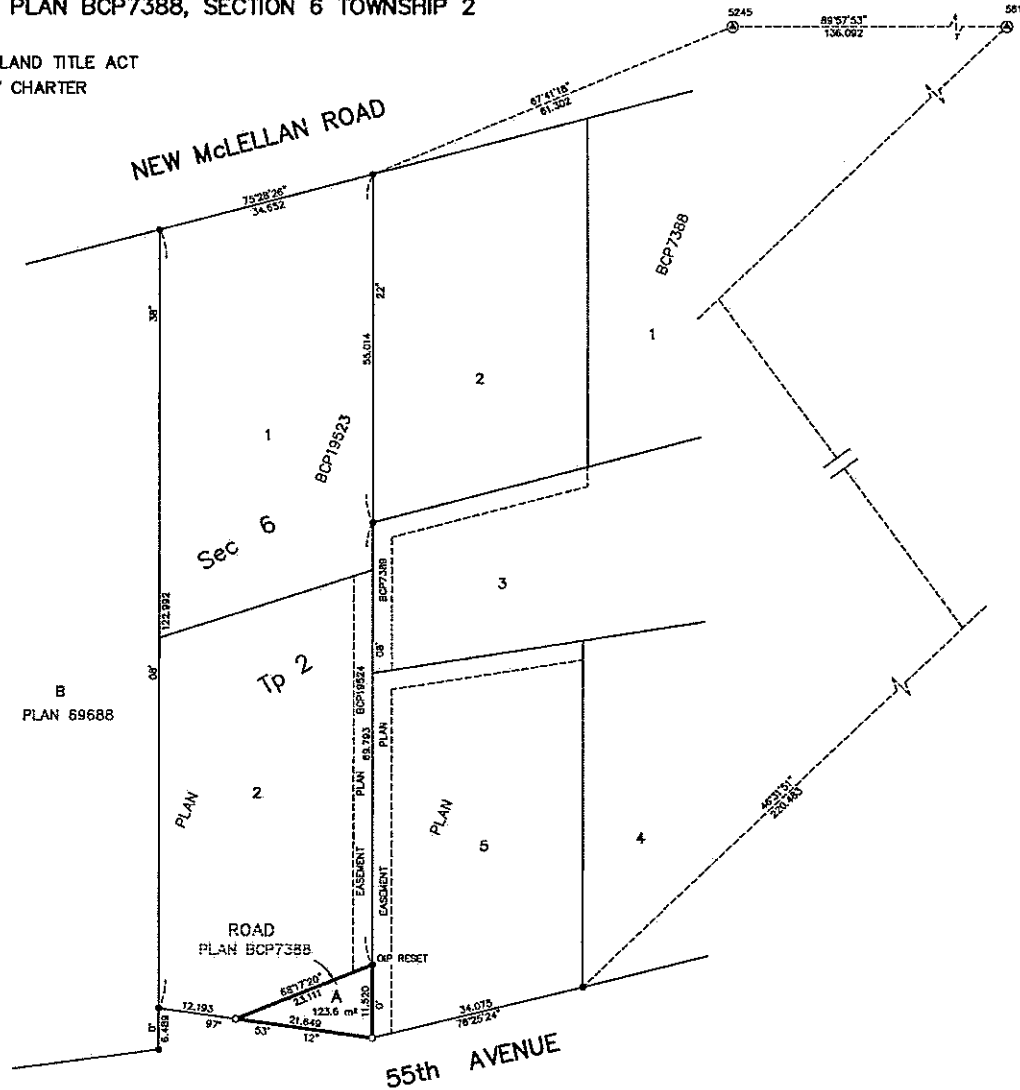
The intended plot size of this plan is 560mm in width by
 432mm in height (C size) when plotted at a scale of 1:500.

LEGEND

- ⊙ Indicates control monument found
- Indicates standard iron post found
- Indicates standard iron post placed

Grid bearings are derived from observations
 between control monuments 5245 and 5814,
 Integrated Survey Area No.1, Surrey B.C.
 NAD83 (CSRS)

This plan shows horizontal ground-level
 distances unless otherwise specified.
 To compute grid distances, multiply
 ground-level distances by the average
 combined factor of 0.99958445 which
 has been derived from geodetic
 control monuments 5245 and 5814.



DHALIWAL & ASSOCIATES
 LAND SURVEYING INC.
 216 - 12299 76th Avenue
 Surrey, B.C.
 V0W 1E6
 (ph) 604 501-8188
 (fx) 604 501-8189
 FILE : 1404005-R01

THIS PLAN LIES WITHIN THE GREATER VANCOUVER REGIONAL DISTRICT

The field survey represented by this plan was
 completed on the 23rd day of May, 2014.
 Gene Paul Nikula, BOLS 803