

CITY OF SURREY

BYLAW NO. 19462

A bylaw to amend "Surrey Zoning By-law, 1993, No. 12000," as amended.

.....

The Council of the City of Surrey ENACTS AS FOLLOWS:

1. "Surrey Zoning By-law, 1993, No. 12000", as amended, is hereby further amended pursuant to the provisions of Section 479 of the *Local Government Act*, R.S.B.C. 2015, c.1, as amended, by changing the classification of the following parcels of land, presently shown upon the maps designated as the Zoning Maps and marked as Schedule "A" under Part 3 of "Surrey Zoning By-law, 1993, No. 12000", as amended, as follows:

FROM: ONE-ACRE RESIDENTIAL ZONE (RA)
TO: HALF-ACRE RESIDENTIAL ZONE (RH)

Portion of Parcel Identifier: 001-811-312
Lot 11 Section 12 Township 1 New Westminster District Plan 46910

(Portion of 16736 – 16 Avenue)

Portion of 16 Avenue Road Allowance

Shown on a Survey Plan attached hereto and forming part of this Bylaw as Schedule A, certified correct by James R. Enders, B.C.L.S. on the 17th day of November, 2017, containing 0.261 hectares called Block A.

2. This Bylaw shall be cited for all purposes as "Surrey Zoning Bylaw, 1993, No. 12000, Amendment Bylaw, 2017, No. 19462"

PASSED FIRST READING on the 4th day of December, 2017.

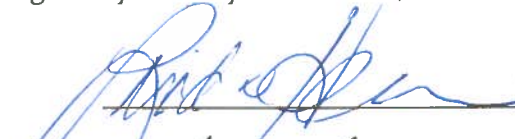
PASSED SECOND READING on the 4th day of December, 2017

PUBLIC HEARING HELD thereon on the 18th day of December, 2017.

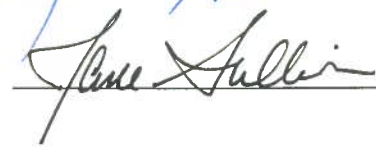
PASSED THIRD READING on the 18th day of December, 2017.

RECEIVED APPROVAL FROM THE MINISTRY OF TRANSPORTATION AND INFRASTRUCTURE
on the 9th day of January, 2018.

RECONSIDERED AND FINALLY ADOPTED, signed by the Mayor and Clerk, and sealed with the
Corporate Seal on the 23rd day of July, 2018



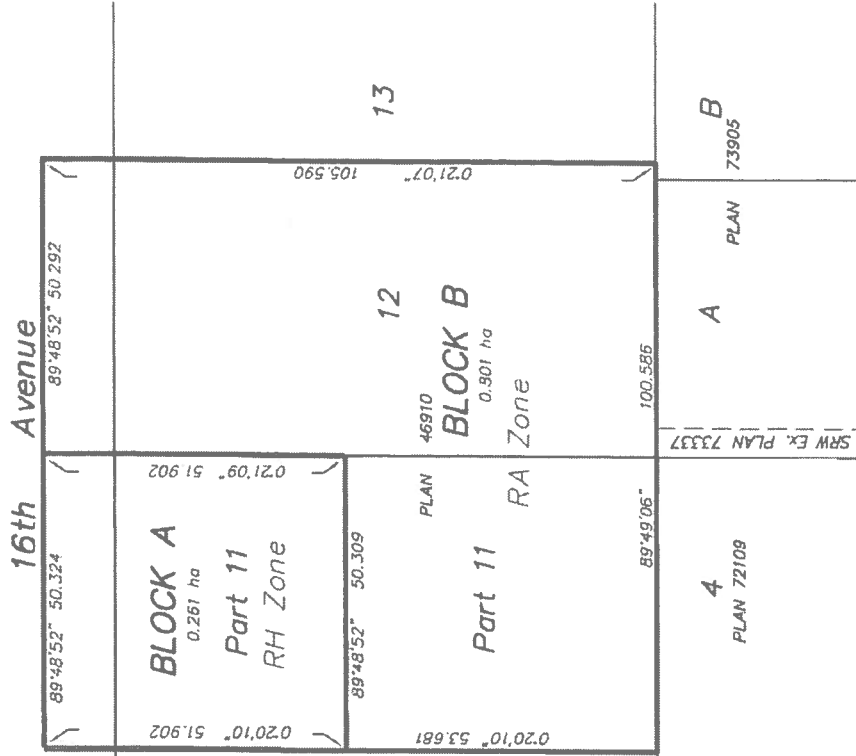
MAYOR



CLERK

h:\clerks\by-laws\bylaw library\adopted\19000\19400\byl 19462.docx

**SURVEY PLAN TO ACCOMPANY CITY OF
SURREY REZONING BYLAW # 19462 OF
LOT 11 AND 12 SECTION 12 TOWNSHIP 1
NEW WESTMINSTER DISTRICT PLAN 46910**



CERTIFIED CORRECT ACCORDING TO SURVEY
DATED THIS 17th DAY OF NOVEMBER, 2017

[Signature]
JAMES R. ENDERS, BCLS 659

MURRAY & ASSOCIATES
PROFESSIONAL LAND SURVEYORS
201-12448 82nd AVENUE
SURREY, BC V3W 3E9
(604) 597-9189

10295base C3D -- BLOCK1