

CITY OF SURREY

BYLAW NO. 19490

A Bylaw to close and to remove the dedication
of a highway of portions of lane
.....

WHEREAS pursuant to Subsection 40(1)(a) of the *Community Charter*, S.B.C. 2003, c. 26, the Council may, by bylaw, close all or part of a highway that is vested in the municipality to all or some types of traffic;

AND WHEREAS pursuant to Section 40(2) of the *Community Charter*, S.B.C. 2003, c. 26, the Council may, by bylaw, remove the dedication of a highway that has been closed by a bylaw under Subsection 40(1)(a).

NOW, THEREFORE the Council of the City of Surrey ENACTS as follows:

1. That portion of Section 15 Block 5 North Range 1 West New Westminster District dedicated by Plan 2368 shown outlined in heavy black line on Reference Plan EPP 79664 attached hereto, prepared by Zuzana Fulkova, B.C.L.S. on the 22nd day of January, 2018, and described as follows:

that portion of lane containing 427.7 square metres and labeled as "Parcel A";

(hereinafter referred to as that portion of Lane)

shall be closed to traffic.

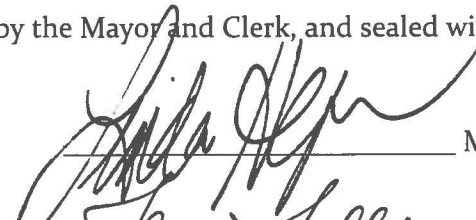
2. The dedication as highway be removed of said portion of Lane.
3. This Bylaw may be cited for all purposes as "Surrey Close and Remove the Dedication of Highway of a Portion of Lane Adjacent to 10863, 10873 and 10879 – 160 Street, 15972 and 15982 – 109 Avenue Bylaw, 2018, No. 19490".

PASSED FIRST READING on the 6th day of February, 2018.

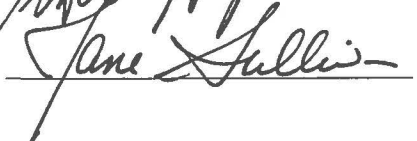
PASSED SECOND READING on the 6th day of February, 2018.

PASSED THIRD READING on the 6th day of February, 2018.

RECONSIDERED AND FINALLY ADOPTED, signed by the Mayor and Clerk, and sealed with the Corporate Seal on the 19th day of February, 2018.



MAYOR



CLERK

REFERENCE PLAN TO ACCOMPANY BYLAW NO. 19490 (CITY OF SURREY)
 TO CLOSE PART OF ROAD DEDICATED ON PLAN 2368, SECTION 15,
 BLOCK 5 NORTH, RANGE 1 WEST, NEW WESTMINSTER DISTRICT

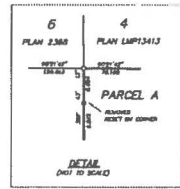
EPP79664

BCOS 92C.017
 PURSUANT TO SECTION 120 OF THE LAND TITLE ACT AND
 SECTION 40 OF THE COMMUNITY CHARTER

ALL DISTANCES ARE IN METRES
 The intended plot sizes of this plan is 864mm in width by 580mm in height
 (D size) when plotted at a scale of 1:500



DATAN: MURRAY (2018) 4.8.8.6.C.L.040
 UTM ZONE: 18
 UTM EASTING: 5449378.241
 UTM NORTHING: 5016682.807
 POINT COUNTERED FACTOR: 0.9885646
 ESTIMATED HORIZONTAL POSITIONAL ACCURACY: 0.04 METRES



DATAN: MURRAY (2018) 4.8.8.6.C.L.040
 UTM ZONE: 18
 UTM EASTING: 5449378.241
 UTM NORTHING: 5016682.807
 POINT COUNTERED FACTOR: 0.9885646
 ESTIMATED HORIZONTAL POSITIONAL ACCURACY: 0.04 METRES

LEGEND:
 (C) BENCHES (CONCRETE, METALWORK, PLASTER)
 (B) BENCHES LEAD PLASTER
 (H) BENCHES BY STANDING SIGN POST PLASTER
 (D) BENCHES BY STANDING SIGN POST PLASTER
 (F) BENCHES BY STANDING SIGN POST PLASTER

INTERNAL SURVEY AREA No. 1, CITY OF SURREY, MARRS (2018) 4.8.8.6.C.L.040
 AND BENCHES ARE DERIVED FROM OBSERVATIONS BETWEEN
 BENCHES CONTROL, MONUMENTS 8276 AND 8896,
 AND ARE REFERRED TO THE CONTROL SIGNATURE OF UTM ZONE 18

THE LINE REPRESENTED AND ESTIMATED HORIZONTAL POSITIONAL
 ACCURACY ADVISED ARE DERIVED FROM THE HARDEST PUBLISHED
 CONTROL AND STATIONED SIGNATURE FOR GEODETIC CONTROL
 MONUMENTS 8276 AND 8896

THE PLAN SHOWS HORIZONTAL, VERTICAL-LEVEL, DISTANCES
 UNLESS OTHERWISE SPECIFIED. TO CURVES AND DISTANCES
 ALONG A BOUNDARY-LINE DISTANCES BY THE AVERAGE CURVED
 FACTOR OF BOUNDARIES WHEN HAS BEEN DERIVED FROM
 GEODETIC CONTROL MONUMENT 8276 AND 8896

MURRAY & ASSOCIATES
 PROFESSIONAL LAND SURVEYORS
 205-12448 BIRD AVE
 SURREY, BC V3W 2E9
 (604) 897-9980

THIS PLAN LIES WITHIN THE METRO VANCOUVER REGIONAL DISTRICT
 (CITY OF SURREY)

THE FIELD SURVEY REPRESENTED BY THIS PLAN WAS COMPLETED
 ON THE 22ND DAY OF JANUARY, 2018
 ZSISANA PUKOVIC, BCLS 944
 FILE: 10420-02