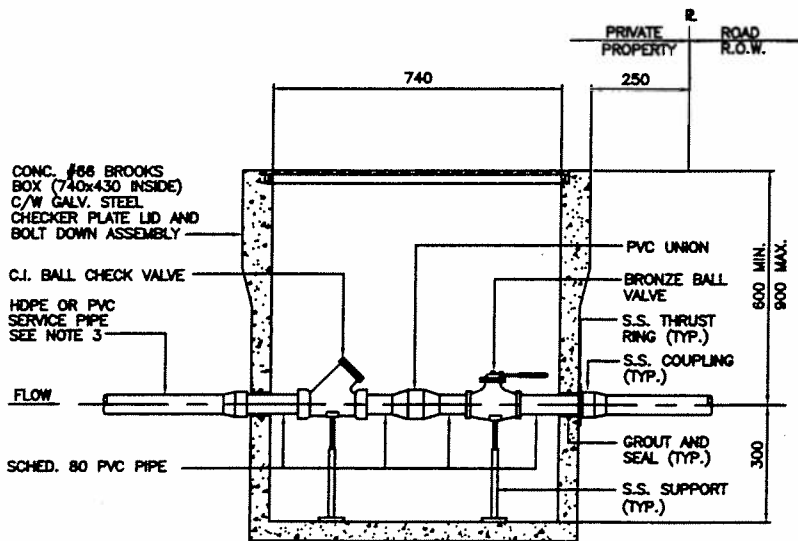


**TYPICAL LOW PRESSURE SEWER CONNECTION**

N.T.S.



**CHAMBER DETAIL**

N.T.S.

**NOTES:**

1. CONTROL PANEL MAY BE LOCATED INSIDE BUILDING OR ON POST ADJACENT TO PUMP CHAMBER IF APPROVED BY CITY.
2. VENT MAY BE CONNECTED TO BUILDING VENT SYSTEM OR LOCATED ADJACENT TO PUMP CHAMBER IF APPROVED BY CITY.
3. ALL PIPE SIZES REFER TO INSIDE DIAMETER (I.D.).
4. SERVICE PIPE MIN. I.D.: 38mm
5. PROPERTY OWNER IS RESPONSIBLE FOR MAINTENANCE OF ALL SEWER CONNECTION COMPONENTS INCLUDING PIPE BETWEEN PROPERTY LINE AND THE CITY SEWER.
6. CHAMBER ACCESS IS TO BE UNOBSTRUCTED.
7. CITY STAFF OR AGENTS ARE ALLOWED UNRESTRICTED ACCESS TO CHAMBER.
8. CHAMBER AND PUMP CHAMBER ARE IN THE PRIVATE PROPERTY.

FILE:G:\032459\SKETCH\032459SK001.DWG

All Dimensions Shown in Millimetres,  
Unless Otherwise Noted

Title

TYPICAL LOW PRESSURE SEWER CONNECTION

Revision Date

Approved

Approved

*Michael...*

Date

May 2004

Drawn By

Associated Engineering (BC) Ltd

DRAWING NUMBER

SSD-S.2



**SURREY**  
CITY OF PARKS