

CITY OF SURREY

BYLAW NO. 20685

A Bylaw to close and to remove the dedication
of a highway of portions of Road
.....

WHEREAS pursuant to Subsection 40(1)(a) of the *Community Charter*, S.B.C. 2003, c. 26, the Council may, by bylaw, close all or part of a highway that is vested in the municipality to all or some types of traffic;

AND WHEREAS pursuant to Section 40(2) of the *Community Charter*, S.B.C. 2003, c. 26, the Council may, by bylaw, remove the dedication of a highway that has been closed by a bylaw under Subsection 40(1)(a).

NOW, THEREFORE the Council of the City of Surrey ENACTS as follows:

1. That portion of road lying in Section 27, Block 5 North, Range 2, West Plan 12996, Plan LMP25267, Plan LMP46320 shown outlined in heavy black line on reference Plan EPP122089 attached hereto, prepared by William C. Oleksuk, B.C.L.S. on the 5th day of July, 2022, and described as follows:

That portion of road labeled Lot A containing 0.110 hectares

(hereinafter referred to as that portion of Road)

shall be closed to traffic.

2. The dedication as highway be removed of said portion of Road.
3. This Bylaw may be cited for all purposes as "Surrey Close and Remove the Dedication of Highway of Adjacent to 10223 and 10285 University Drive, Bylaw, 2022, No. 20685".

PASSED FIRST READING on the 25th day of July, 2022.

PASSED SECOND READING on the 25th day of July, 2022.

PASSED THIRD READING on the 25th day of July, 2022.

NOTICE OF INTENTION ADVERTISED on the 28th day of July and 4th day of August 2022, in the SURREY NOW LEADER newspapers.

RECONSIDERED AND FINALLY ADOPTED, signed by the Mayor and Clerk, and sealed with the Corporate Seal on the 8th day of August, 2022.


MAYOR


CLERK

**REFERENCE PLAN TO ACCOMPANY CITY OF SURREY ROAD
CLOSURE BYLAW NUMBER 20685 OF PORTIONS OF SECTION 27,
BLOCK 5 NORTH, RANGE 2 WEST, BEING:**

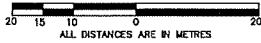
PLAN EPP122089

FIRSTLY: PART OF ROAD DEDICATED ON REFERENCE PLAN 12996.
SECONDLY: PARTS OF ROAD DEDICATED ON PLAN LMP25267.
THIRDLY: PART OF ROAD DEDICATED ON PLAN LMP46320.
NEW WESTMINSTER DISTRICT

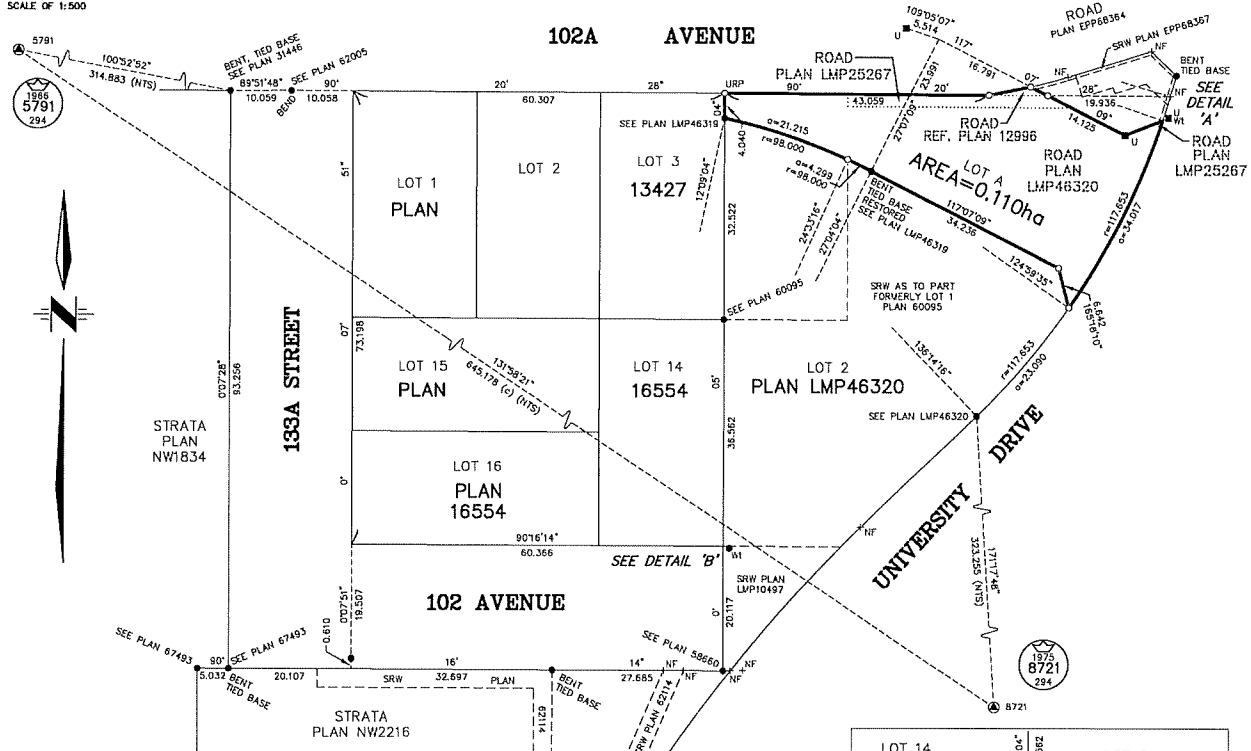
B.C.G.S. 92G.016

PURSUANT TO SECTION 40 OF THE COMMUNITY CHARTER
AND PURSUANT TO SECTION 120 OF THE LAND TITLE ACT

GEODETTIC CONTROL MONUMENTS			
UTM ZONE: TO NORTH - DATUM: NAD83(CSRS)	4.0.0.BC.1.UVRD		
TABLET MARKING	NORTHING	EASTING	COMBINED FACTOR
5791	5448510.256	510458.586	0.9995896
8721	5448078.555	510938.058	0.9995915
			ABSOLUTE ACCURACY ACHIEVED
			0.03

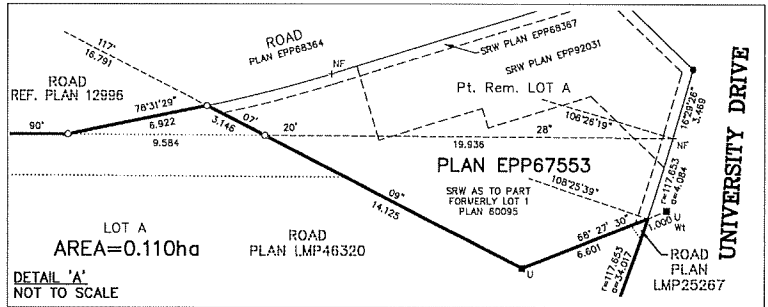
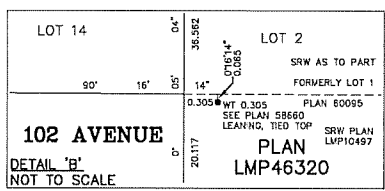


THE INTENDED PLOT SIZE OF THIS PLAN IS 432mm IN WIDTH
BY 580mm IN HEIGHT (C SIZE SHEET) WHEN PLOTTED AT A
SCALE OF 1:500



- LEGEND**
- ⊙ INDICATES CONTROL MONUMENT FOUND
 - INDICATES LEAD PLUG FOUND
 - INDICATES STANDARD IRON POST FOUND
 - INDICATES STANDARD IRON POST SET
 - ⊕ INDICATES UNMONUMENTED POINT
 - NF DENOTES NO EVIDENCE FOUND
 - WL DENOTES WITNESS
 - NTS DENOTES NOT TO SCALE
 - (C) DENOTES CALCULATED
 - U DENOTES UNKNOWN ORIGIN
 - PL DENOTES PART
 - REF: DENOTES REFERENCE
 - URP DENOTES UNSUITABLE FOR A REFERENCE POST

THIS PLAN SHOWS ONE OR MORE WITNESS POSTS WHICH ARE NOT SET ON THE TRUE CORNER(S).
SOME SYMBOLS AND LINES HAVE BEEN EXAGGERATED FOR CLARITY.
THE UTM COORDINATES AND ESTIMATED ABSOLUTE ACCURACY ACHIEVED ARE DERIVED FROM DUAL FREQUENCY DIFFERENTIAL GNSS OBSERVATIONS TO GEODETTIC CONTROL MONUMENTS 5791, AND 8721.
GRID BEARINGS ARE DERIVED FROM DUAL FREQUENCY DIFFERENTIAL GNSS OBSERVATIONS AND ARE REFERRED TO THE CENTRAL MERIDIAN OF UTM ZONE 10.
THIS PLAN SHOWS HORIZONTAL GROUND-LEVEL DISTANCES, UNLESS OTHERWISE SPECIFIED, TO COMPUTE GRID DISTANCES. MULTIPLY GROUND-LEVEL DISTANCES BY THE AVERAGE COMBINED FACTOR OF 0.9995896. THE AVERAGE COMBINED FACTOR HAS BEEN DETERMINED BASED ON AN ELLIPSOIDAL ELEVATION OF 66.7m.



CITY OF SURREY
SURVEY SECTION
13450 - 104 AVENUE
SURREY, BC V3T 1V8
TEL (604) 591-4253

THE FIELD SURVEY REPRESENTED BY THIS PLAN WAS COMPLETED ON THE 6th DAY OF JULY, 2022
WILLIAM C. DLEKSIK, BCLS 1026

THIS PLAN LIES WITHIN THE METRO VANCOUVER REGIONAL DISTRICT
THIS PLAN LIES WITHIN INTEGRATED SURVEY AREA NO. 1, SURREY, NAD83(CSRS) 4.0.0.BC.1.UVRD