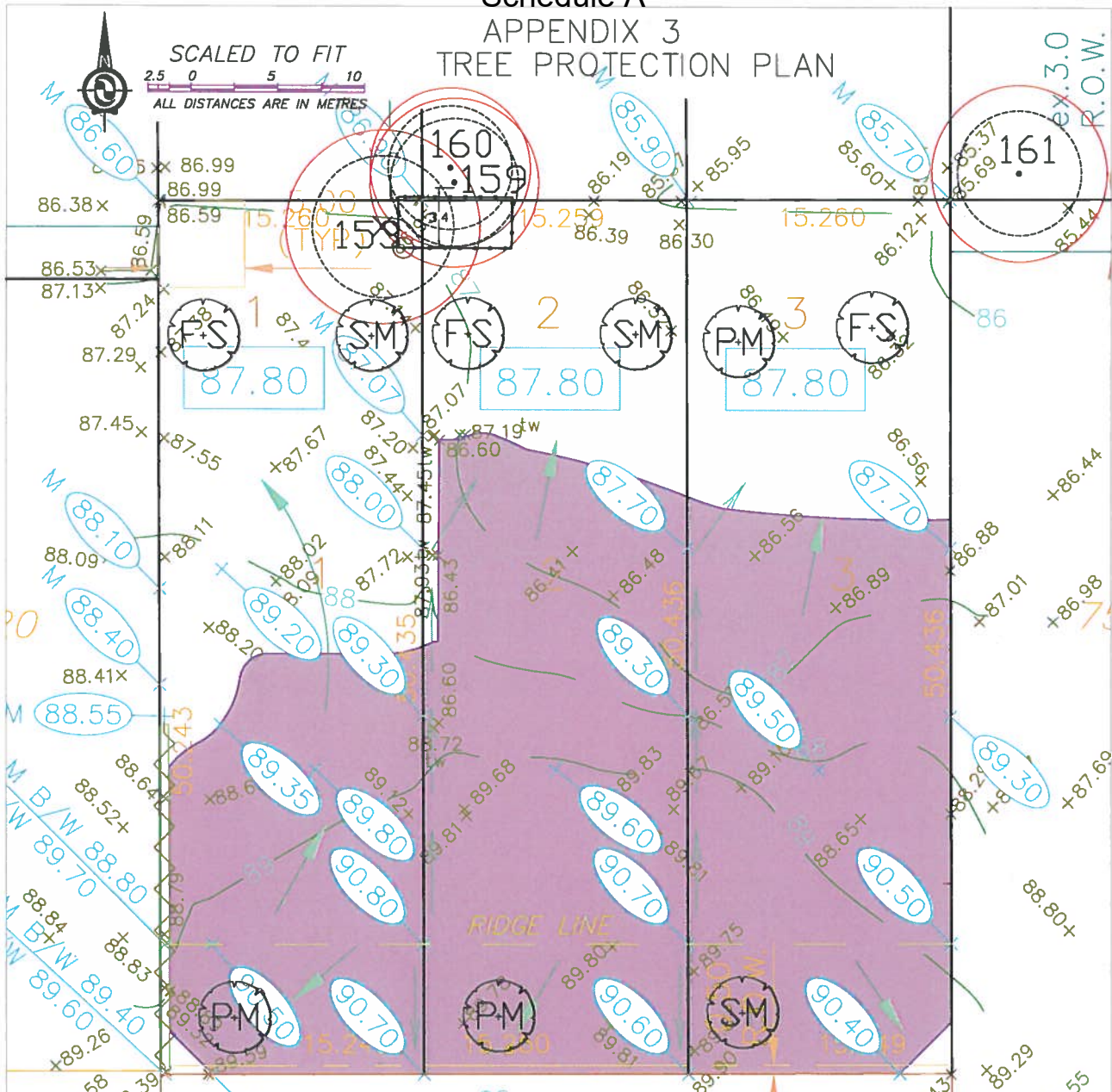


Schedule A

APPENDIX 3

TREE PROTECTION PLAN



REPLACEMENT TREES

QTY	Type	Size
3	Fragrant Snowbell	6cm
3	Paperbark Maple	6cm
3	Saucer Magnolia	6cm

TREE PROTECTION FENCING

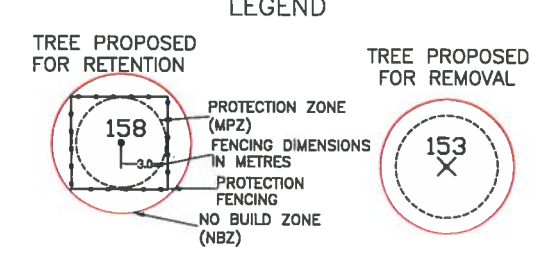
Minimum Radial Distance from trunk

#	Type	DBH	Metres	Feet
159	Paper Birch	40/30cm	3.4m	11.2ft
160	Western Hemlock	40cm	2.4m	7.9ft

TREE INVENTORY

#	Type	Action	DBH	MPZ
153	Western Redcedar	Remove	68cm	4.1m
159	Paper Birch	Retain	40/30cm	3.4m
160	Western Hemlock	Retain	40cm	2.4m
161	Weeping Willow	Retain	60cm	3.6m

DBH- trunk diameter, MPZ- protection zone



NOTES:

1. PLANTS IN THE PLANT LIST ARE SPECIFIED ACCORDING TO THE LANDSCAPE CANADA GUIDE SPECIFICATIONS FOR NURSERY STOCK AND THE BCNTA STANDARD FOR CONTAINER GROWN PLANTS.

2. ALL LANDSCAPING AND LANDSCAPE MATERIALS CONFORM TO THE LATEST EDITION OF THE BCNTA/BCSLA "LANDSCAPE STANDARDS".

NOTES:

1. SITE LAYOUT INFORMATION AND TREE SURVEY DATA PER SUPPLIED DRAWING

2. REFER TO ATTACHED TREE PROTECTION REPORT FOR INFORMATION CONCERNING TREE SPECIES, STEM DIAMETER, HEIGHT, CANOPY SPREAD AND CONDITION.

3. ALL MEASUREMENTS ARE METRIC

Froggers Creek
Tree Consultants Ltd

7783 McGregor Avenue Burnaby BC V5J 4M4
Telephone: 604-721-8002 Fax: 604-437-0870
11859 86th Ave Surrey BC

TREE PROTECTION DRAWING

THE DRAWING PLOTS ALL TREES, PROPOSED FOR RETENTION, REMOVAL, THEIR PROTECTION ZONES, PROTECTION FENCING AND REPLACEMENT TREES IN RELATION TO PROPOSED LAYOUT

April 28, 2018

MP Chan
March 2011

Retain 153 as sanitary access from 96 Ave