

City of Surrey

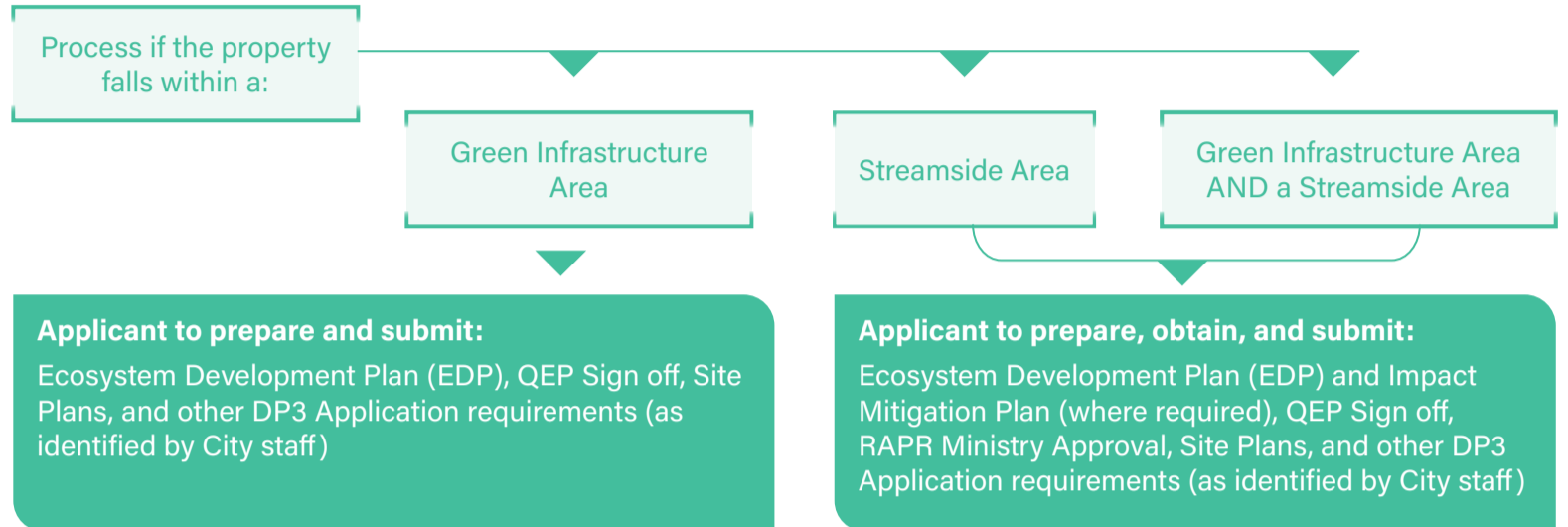
Sensitive Ecosystem Development Permit Area (DP3) Application Process

Pre-application Phase

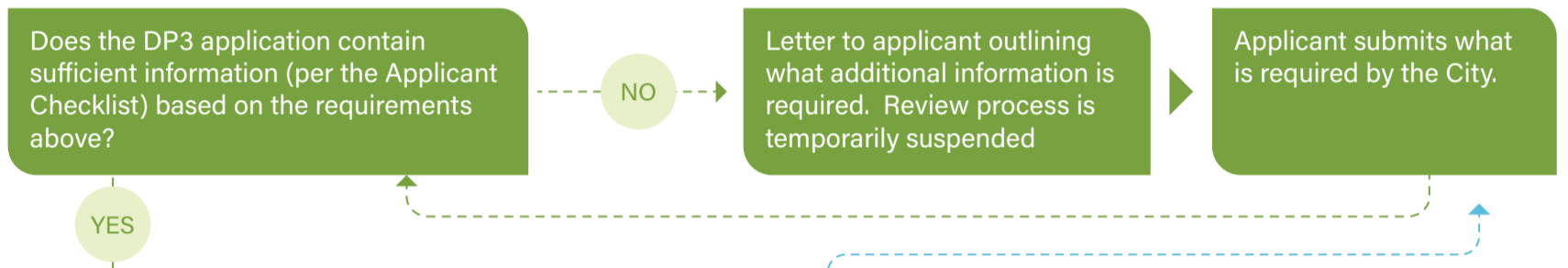
Pre-application is the first step in the City of Surrey's land development process. Through the pre-application phase, applicants will have the opportunity to discuss multiple aspects of a potential development, including key environmental issues or constraints with City staff early in the development process before extensive site planning is undertaken. This may include site development opportunities and limitations, environmental approvals and permitting requirements (provincial and federal), as well as stream and wetland classification requirements. A pre-application meeting should include the applicant, their QEP, and representatives from applicable City Referral Groups.*

*City Referral Groups may include but not limited to: Planning and Development; Land Development Engineering; Trees and Landscape; Building; Parks, Recreation & Culture; Transportation; Utilities

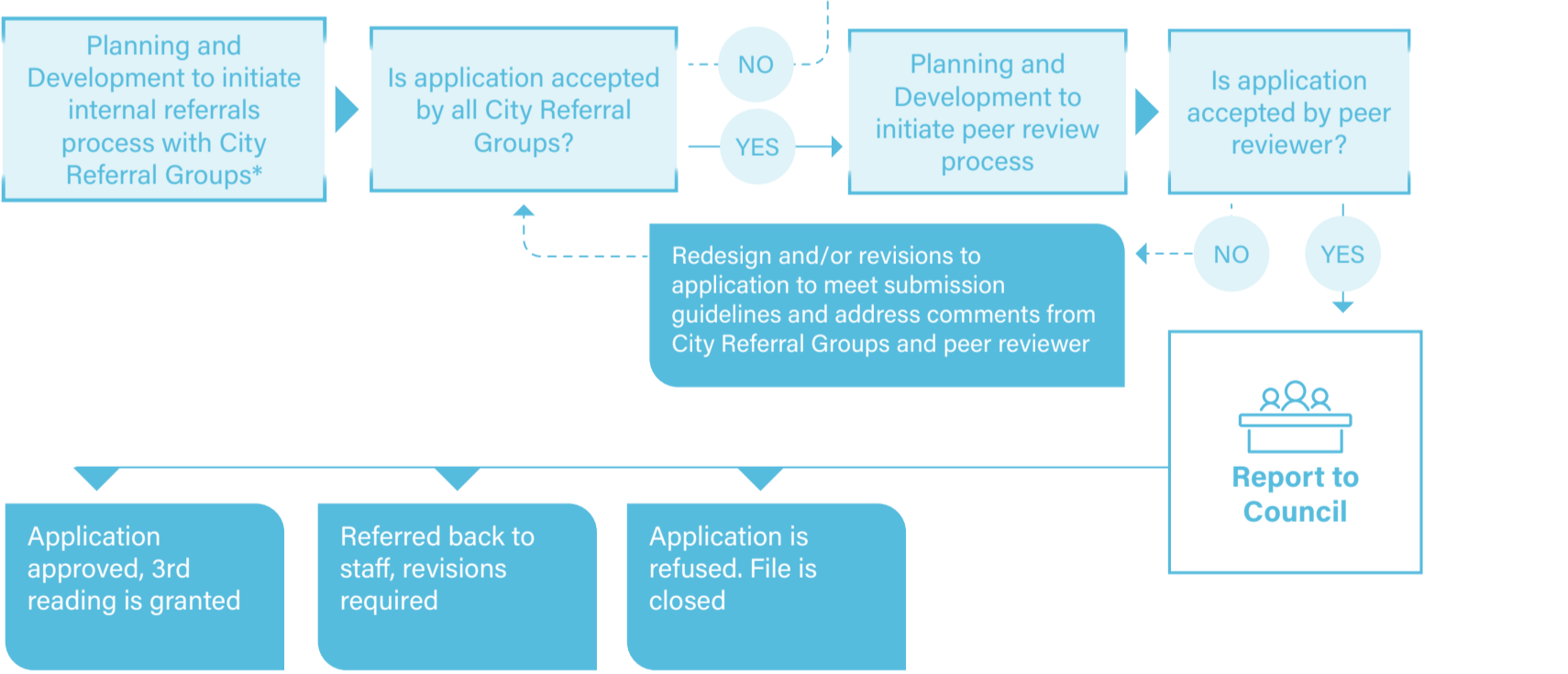
Application Preparation Phase (by applicant)



Application Phase (by Planning and Development Group)



Application Review and Decision Phase



Detailed Design and Permit Issuance Phase

