





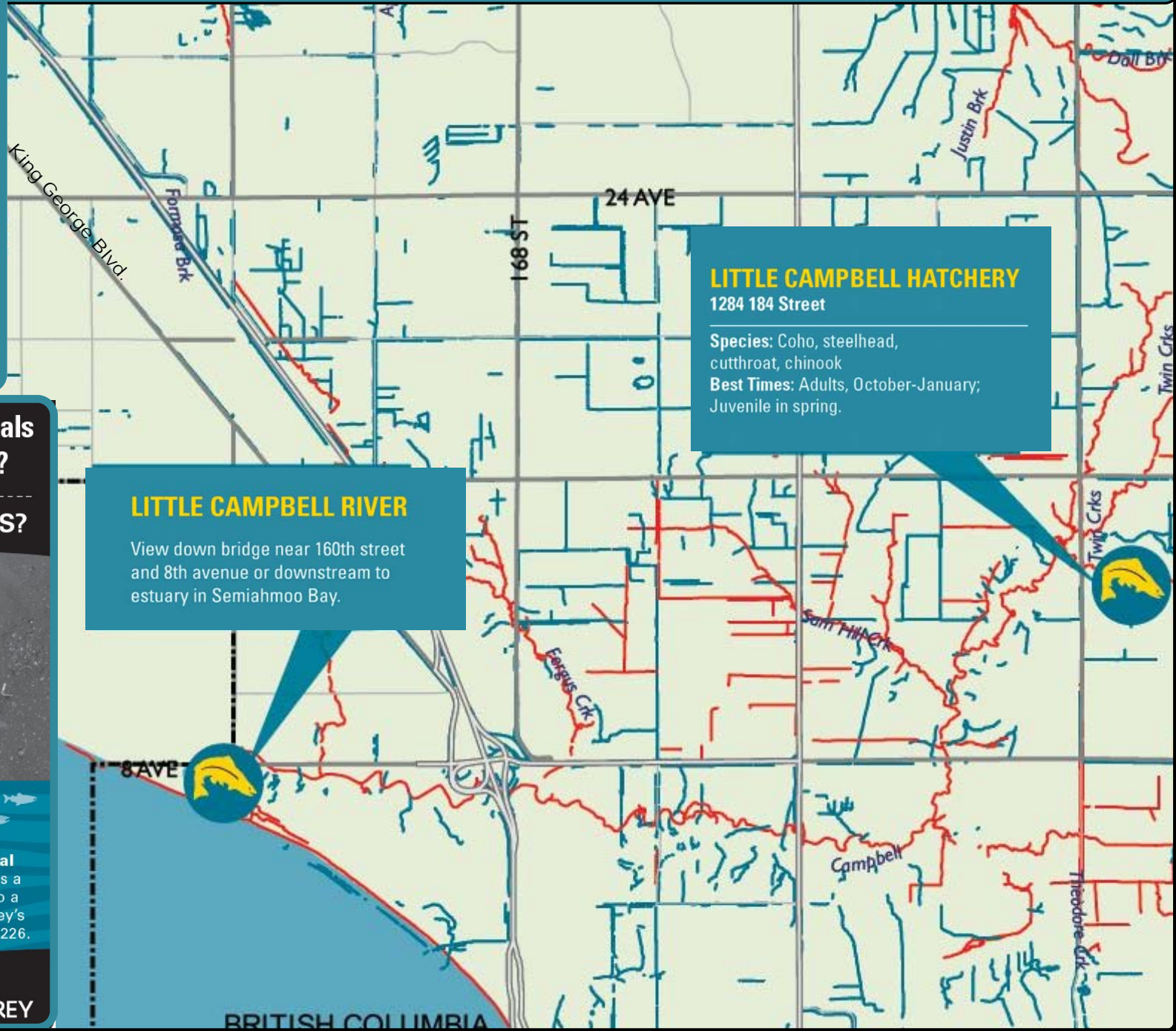


Little Campbell Estuary

SPOTTING
Salmon
IN THE CITY

LEGEND

- FISH BEARING STREAMS & CREEKS 
- OTHER STREAMS & CREEKS (NO SALMON OR TROUT) 
- ROAD NETWORK 
- BODIES OF WATER 
- PARKS 
- SPOT FISH HERE 



LITTLE CAMPBELL HATCHERY
1284 184 Street

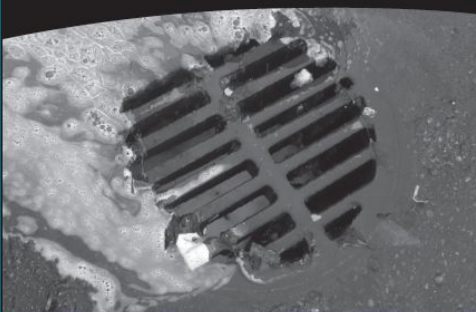
Species: Coho, steelhead, cutthroat, chinook
Best Times: Adults, October-January; Juvenile in spring.

LITTLE CAMPBELL RIVER

View down bridge near 160th street and 8th avenue or downstream to estuary in Semiahmoo Bay.

Would you dump chemicals in your drinking water?

WHY DUMP IT IN THEIRS?



FISH TIP

All storm drains connect to local creeks and streams. If you witness a spill or chemicals being washed into a storm drain, contact the City of Surrey's Engineering Department at 604-590-7226.