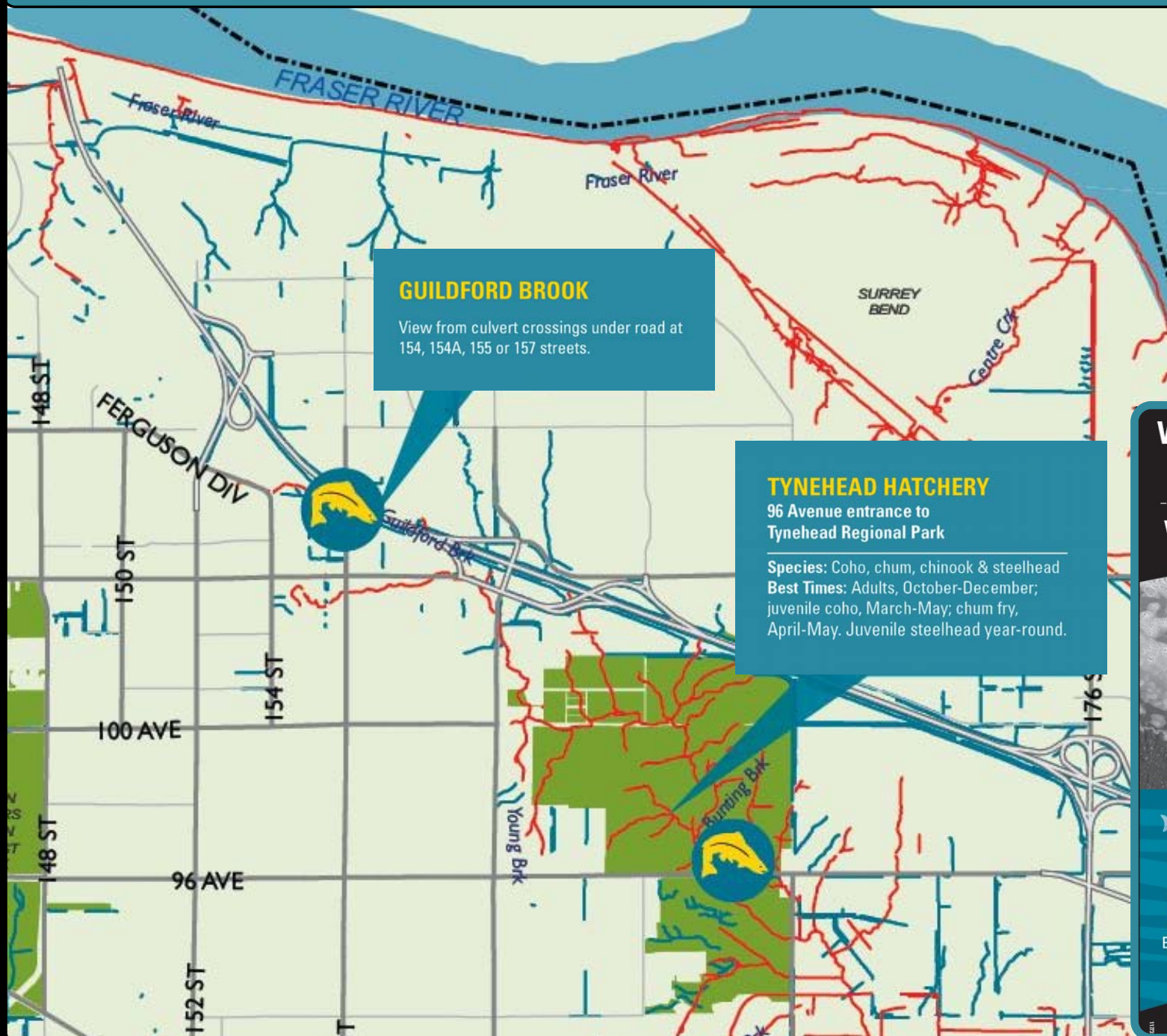


Tynehead Hatchery & Guildford Brook




GUILDFORD BROOK
View from culvert crossings under road at 154, 154A, 155 or 157 streets.

TYNEHEAD HATCHERY
96 Avenue entrance to Tynehead Regional Park
Species: Coho, chum, chinook & steelhead
Best Times: Adults, October-December; juvenile coho, March-May; chum fry, April-May. Juvenile steelhead year-round.

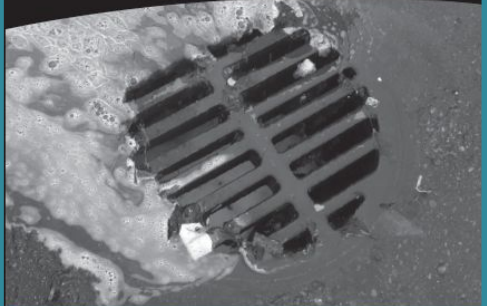
SPOTTING Salmon IN THE CITY

LEGEND

- FISH BEARING STREAMS & CREEKS —
- OTHER STREAMS & CREEKS (NO SALMON OR TROUT) —
- ROAD NETWORK —
- BODIES OF WATER ■
- PARKS ■
- SPOT FISH HERE 

Would you dump chemicals in your drinking water?

WHY DUMP IT IN THEIRS?



FISH TIP

All storm drains connect to local creeks and streams. If you witness a spill or chemicals being washed into a storm drain, contact the City of Surrey's Engineering Department at 604-590-7226.