

CITY OF SURREY

BYLAW NO. 20482

A bylaw to amend Surrey Zoning By-law, 1993, No. 12000, as amended.
.....

The Council of the City of Surrey ENACTS AS FOLLOWS:

1. Surrey Zoning By-law, 1993, No. 12000, as amended, is hereby further amended pursuant to the provisions of Section 479 of the *Local Government Act*, R.S.B.C. 2015, c.1, as amended, by changing the classification of the following parcels of land, presently shown upon the maps designated as the Zoning Maps and marked as Schedule A under Part 3 of Surrey Zoning By-law, 1993, No. 12000, as amended, as follows:

FROM: SINGLE FAMILY RESIDENTIAL ZONE (RF)
TO: SINGLE FAMILY RESIDENTIAL (13) ZONE (RF-13)

Portion of PID: 008-751-366
Lot 11 Section 7 Township 8 New Westminster District Plan 8584
containing 925.5 square metres labeled Block 2

(Portion of 5892 – 172 Street)

Shown on a Survey Plan attached hereto and forming part of this Bylaw as Schedule A, certified correct by Sean Costello, B.C.L.S. on the 12th day of August, 2021.

2. This Bylaw shall be cited for all purposes as "Surrey Zoning Bylaw, 1993, No. 12000, Amendment Bylaw, 2021, No. 20482".

PASSED FIRST READING on the 22nd day of November, 2021.

PASSED SECOND READING on the 22nd day of November, 2021.

PUBLIC HEARING HELD thereon on the th day of, 20 .

PASSED THIRD READING on the th day of, 20 .

RECEIVED APPROVAL FROM THE MINISTRY OF TRANSPORTATION AND INFRASTRUCTURE
on the day of , 20 .

RECONSIDERED AND FINALLY ADOPTED, signed by the Mayor and Clerk, and sealed with the
Corporate Seal on the th day of, 20 .

_____MAYOR

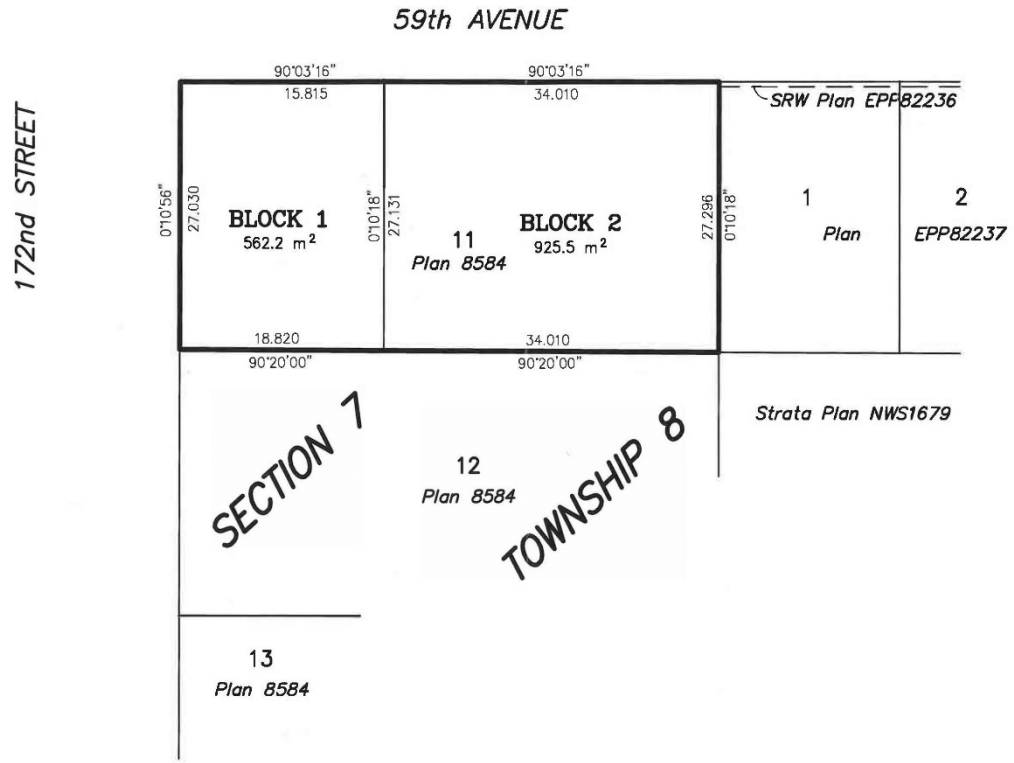
_____CLERK

**SURVEY PLAN TO ACCOMPANY CITY OF SURREY REZONING
BYLAW NO. 20482 OF LOT 11 SECTION 7 TOWNSHIP 8
NEW WESTMINSTER DISTRICT PLAN 8584**

City of Surrey B.C.G.S. 92G.017



SCALE - 1 : 500
All distances are in metres



Cameron Land Surveying Ltd.
B.C. Land Surveyors
Unit 234-18525-53rd Street
Surrey, B.C. V3S 7A4
Phone: 604-597-3777
File: 7820-BLOCK



Certified correct to survey dated this 12th day of August, 2021.

Sean Costello, B.C.L.S.