



PROCUREMENT SERVICES

CITY OF SURREY, SURREY CITY HALL
13450 – 104 Avenue, Surrey, B.C., V3T 1V8
Tel: 604-590-7274
E-mail: purchasing@surrey.ca

ADDENDUM No. 1

REQUEST FOR QUOTATIONS (RFQ) No.: 1220-040-2022-036

TITLE: Bear Creek Park Lights Event

ADDENDUM ISSUE DATE: April 26th, 2022

DATE: PREFER TO RECEIVE QUOTATIONS ON OR BEFORE May 2nd, 2022.

INFORMATION FOR CONTRACTORS

Contractors are advised that Addendum No. 1 to 1220-040-2022-036 is hereby issued by the City. This addendum shall form part of the contract documents and is to be read, interpreted and coordinated with all other parts. The following information is provided to answer questions raised by Contractors for the above-named project, to the extent referenced and shall become a part thereof. No consideration will be allowed for extras due to the Contractors or any sub-contractor not being familiar with this addendum. This Addendum No. 1 contains six (6) pages.

REVISION TO SCHEDULE A-1 – SITE MAP & LEGEND:

SCHEDULE A-1 – SITE MAP & LEGEND is to be deleted in its entirety and substituted with SCHEDULE A-1 – SITE MAP & LEGEND as attached to this Addendum No. 1. Please note that Feature #25 has been removed from the map and #35 has been added for an entry archway.

QUESTIONS AND ANSWERS:

- Q1.** What color lighting should be used on the tree wrapping?
- A1.** Colors will be individually specified after the contract award.
- Q2.** Do contractors need to provide lighting on pathways?
- A2.** No, safety lighting on pathways will be provided by the City.
- Q3.** What equipment or accessories will Contractors need to provide for access to power?
- A3.** The City will supply power up to the base of trees and displays with extension cords.

Q4. Can Contractors access the display and tree wrapping areas with lift trucks?

A4. Please see Attachment 1 which shows what areas will be accessible via lift truck. Ladder work is expected in areas where lift trucks are not permitted to access.

Plywood must be laid along the edges of the path to protect landscaping if lift trucks are to access park areas.

Q5. Do you have any sizing requirements for the entrance archway?

A5. Entrance archway cannot be lower than 12.5ft in height and 20 ft wide.

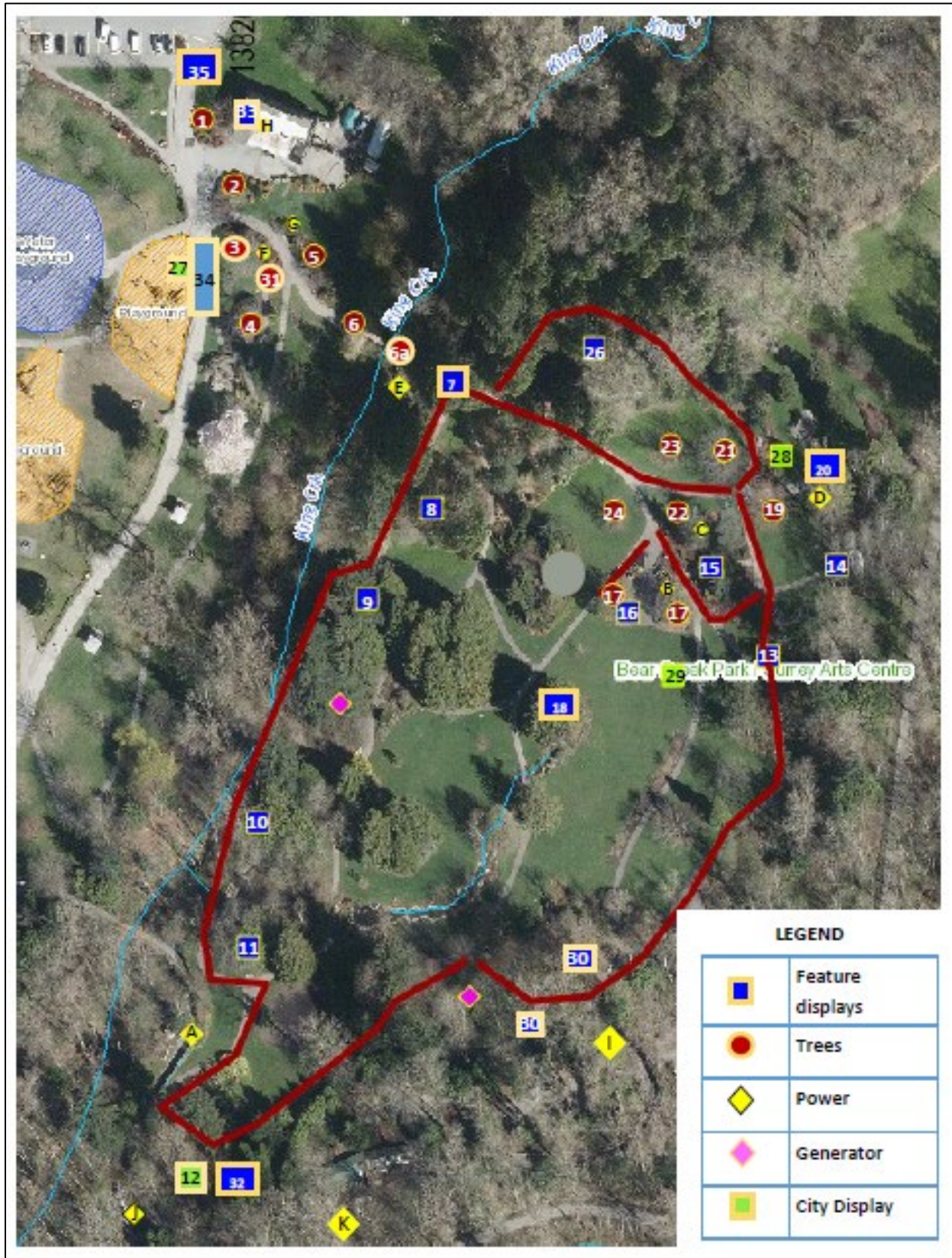
Q6. Please specify how high tree wrapping should go.

A6. For branch & canopy wrapping it should go as high as is possible with the equipment available. In areas where there is room for a lift truck the whole tree should be done. Using 25' strings - for large trees, base quote off of using 110 strings, medium trees, base quote off of using 45 strings and on small trees base quote off of 25 strings.

All Addenda will become part of the Contract Documents.

- END OF ADDENDUM -

SCHEDULE A-1 – SITE MAP & LEGEND



Bear Creek Park Lights Concept - Map Legend

		Number/shape on Map	Details	Power Connection
Power	8 locations	Yellow diamonds A-I		
Generators	2 locations	Pink diamonds		
Not included in contract				
City led displays		12,27, 28, 29		A,F,D,B
Archway		12		A
Cone trees		29		B
Red blossoms		19		D
Rainbow lights		27		F
Food Trucks		34	Self sufficient	
Package #1 – Tree Wrapping				
Canopy wrapped trees	large trees	19, 21,22	Colours TBD	C
Canopy wrapped trees	small	5,31	Colours TBD	G,F
Trunk and Branch Wrap trees	large trees – 100+ light strings	3,4,24	Colours TBD	F, C
Trunk and Branch Wrap trees	medium trees – 45+ light strings	1,2,23	Colours TBD	H,G,C
Trunk and Branch Wrap trees	small trees – 25 light strings	5,31	Colours TBD	G,F
Trunk wraps	small	32	Colours TBD	A
Wrapped trees at bridge entrance		6	wrapped mini lights	G
Entrance bridge railings		6a	twinkle lights	E
Trunk wrapped trees over pathway		8 & 30	beginning of WC Native path & near pagoda	E & I
Branch and trunk wraps		11	Rainbow area	A
Package #2 – Feature Displays				
Feature	Open to creative	9	Mother tree area	Generator
Feature	Open to creative	10	before the duck bridge	A
Feature	Large fir tree trunks	26	Colour trunk wraps & white hanging twinkle balls	E & I
Feature	mixed forested area - small wrapped trees	13	colourful tree walk	D
Feature	Chapel	14	colourful reflected lighting	D
Feature	firs NE of plaza	15	playful, Seussical	C
Feature	Plaza	16		B
Feature	Bear's Den wall	33		H

Bear Creek Park Lights Concept - Map Legend

		Number/shape on Map	Details	Power Connection
Uplighting	large trees	7, 17, 18, 20, , 32	Colours TBD	Various
Feature	Entry Archway	35	12.5ft height, 20 ft wide	H

ATTACHMENT 1 – LIFT TRUCK ACCESS

- All boom lifts and lift trucks must be included in the cost of your quote. The City of Surrey does not supply this equipment.
- Plywood must be laid on the edge of the pathways. The city of Surrey does not supply it.

