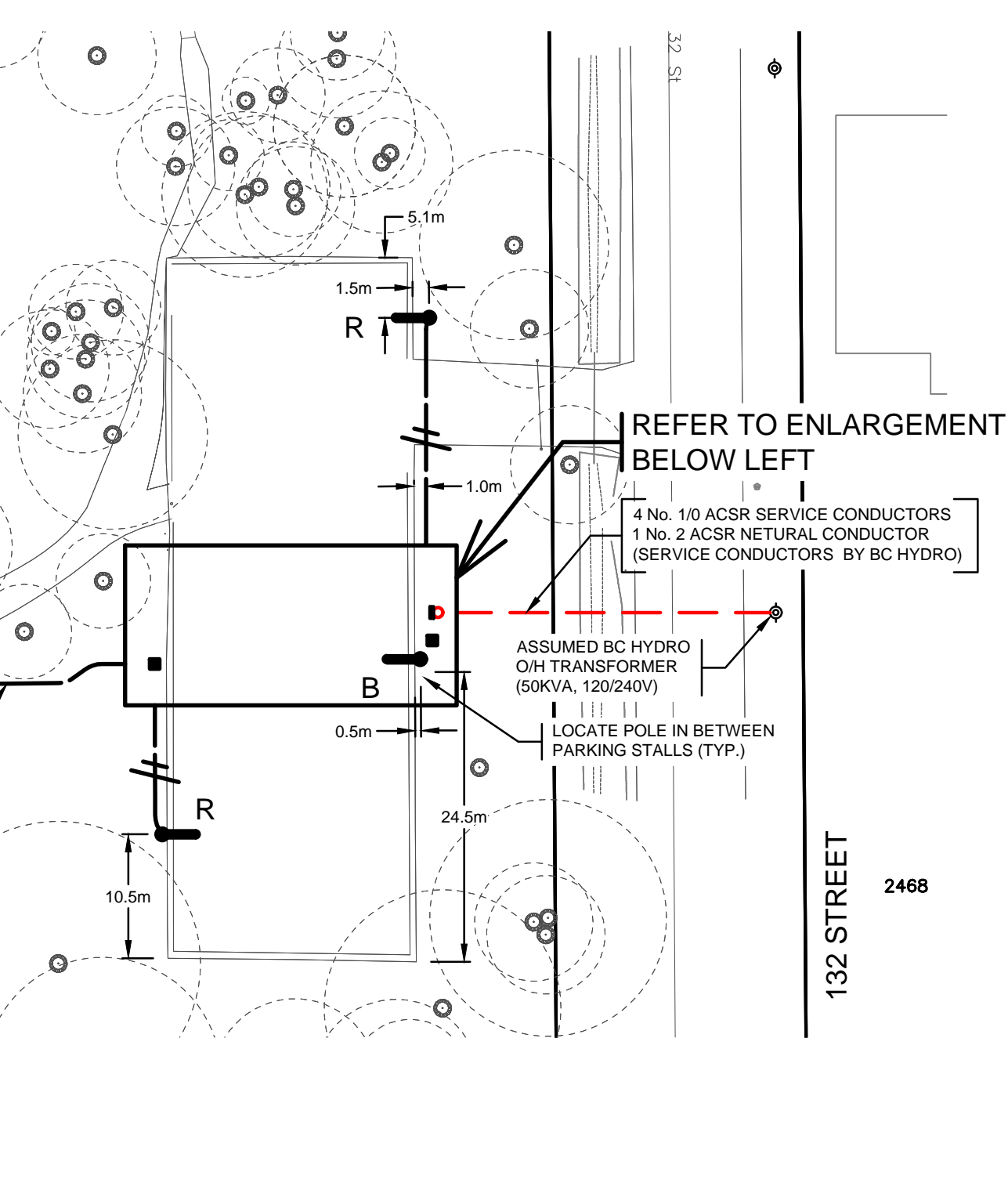


PARKING LOT DESIGN CRITERIA		
ITEM	DESIGN REQUIREMENTS	DESIGN ACHIEVED
ILLUMINATION TYPE	ATB0 - 36W 4K LED TYPE R4	
ILLUMINANCE LEVEL (MIN.)	2.0 LUX	2.1 LUX
ILLUMINANCE UNIFORMITY RATIO (MAX.:MIN.)	20:0.1	3.9:1

* REQUIRED LEVELS ARE BASED ON IES RP-8-18 RECOMMENDED PRACTICE FOR PARKING LOTS (ADDENDA 1)
 ** BASED ON A 10 YEAR CLEANING CYCLE & 20 YEAR FIXTURE LIFE

SPORTS LIGHTING DESIGN CRITERIA		
ITEM	DESIGN REQUIREMENTS	DESIGN ACHIEVED
LOCATION	CRESCENT PARK, SURREY	
FIELD TYPE	PICKLEBALL	
EQUIPMENT TYPE	TLC - 580W LED 5700K	
MAINTAINED ILLUMINANCE LEVEL (AVG.)	200 LUX	244 LUX
ILLUMINANCE UNIFORMITY RATIO (MAX.:MIN.)	3.0:1	1.9:1

• BASED ON RP6-20 TABLE A-2 PLATFORM TENNIS (CLASS 4)



LEGEND

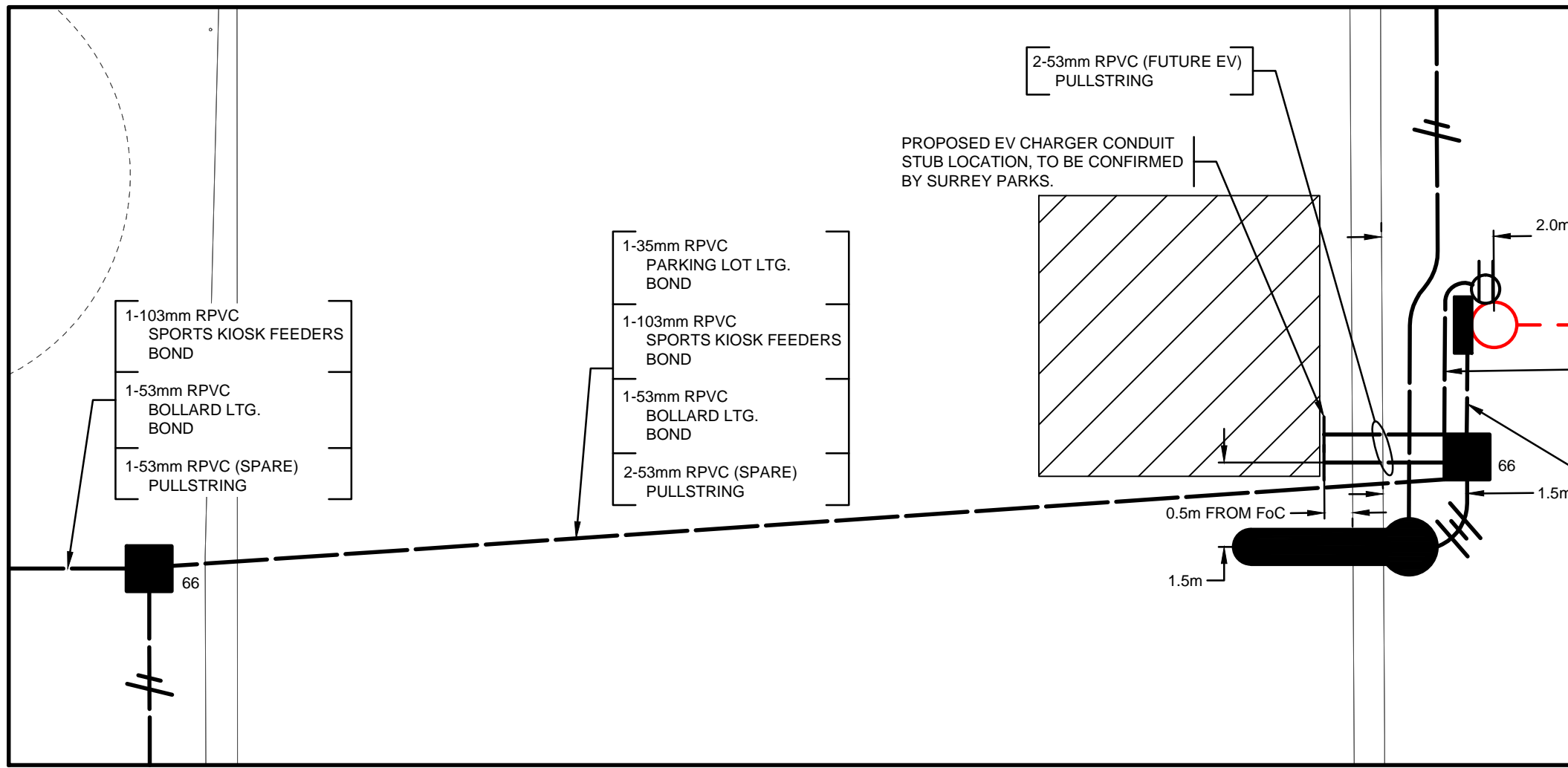
- PROPOSED SPORTS LIGHTING POLE AND FIXTURES.
- ★ PROPOSED SECURITY LIGHT ON SPORTS LIGHTING POLE (REFER TO ELEVATION ON SHEET 3 FOR DETAILS)
- PROPOSED 9.0m SINGLE PARKING LOT POLE ON A 0.9m SONOTUBE CONCRETE RAISED BASE. SEE ELEVATIONS FOR DETAILS (UNLESS OTHERWISE NOTED)
- PROPOSED 1.0m BOLLARD LIGHTING (REFER TO ELEVATION ON SHEET 3 FOR DETAILS)
- FUTURE SPORTS LIGHTING POLE AND FIXTURES.
- FUTURE SECURITY LIGHT ON SPORTS LIGHTING POLE
- PROPOSED PUSHBUTTON C/W ENCLOSURE (REFER TO ELEVATION ON SHEET 3 FOR DETAILS)
- PROPOSED ELECTRICAL COMPONENT ENCLOSURE
- FUTURE ELECTRICAL COMPONENT ENCLOSURE
- PROPOSED SPORTS LIGHTING KIOSK C/W 3" CONCRETE SERVICE PAD 1m IN FRONT OF ALL ACCESS DOORS
- PROPOSED MODIFIED PLASTIC JUNCTION BOX (No. 10) 2 SECTIONS DEEP C/W BOTTOM SECTION AND BONDED GALVANIZED SECURITY LID
- PROPOSED CONCRETE JUNCTION BOX (No. 66) 2 SECTIONS DEEP C/W BOTTOM SECTION AND BONDED GALVANIZED SECURITY LID
- PROPOSED CONCRETE JUNCTION BOX (No. 5686) 2 SECTIONS DEEP C/W BOTTOM SECTION AND BONDED GALVANIZED SECURITY LID
- PROPOSED RECEPTACLE MOUNTED TO SPORTS LIGHT POLE (REFER TO ELEVATION ON SHEET 3 FOR DETAILS)
- FUTURE RECEPTACLE MOUNTED TO SPORTS LIGHT POLE (REFER TO ELEVATION ON SHEET 3 FOR DETAILS)
- PROPOSED 2 No. 4 RW90 LTG. AND 1 No. 6 BOND IN 1-35mm RPVC
- PROPOSED 3 No. 4 RW90 LTG. AND 1 No. 6 BOND IN 1-35mm RPVC
- PROPOSED UNDERGROUND 53mm RPVC ELECTRICAL CONDUIT (120/240V)
- PROPOSED BC HYDRO UNDERGROUND CONDUIT AND SERVICE CONDUCTORS
- SPORTS LIGHTING POLE NUMBER
- LUMINAIRE ON RED PHASE CONDUCTOR
- LUMINAIRE ON BLUE PHASE CONDUCTOR
- EXISTING BC HYDRO POLE
- PROPOSED 25' SERVICE POLE (CL2 WRC) ON PRIVATE PROPERTY C/W METER BASE ENCLOSURE AND A 200A STEEL POLE MOUNTED SERVICE PANEL. (REFER TO ELEVATION ON SHEET 2 FOR DETAILS)

NOTES

1. ALL WORKS SHALL BE DONE IN ACCORDANCE WITH MASTER MUNICIPAL CONSTRUCTION DOCUMENTS (MCMCD) PLATINUM EDITION, AND THE CANADIAN ELECTRICAL CODE.
2. ALL CONDUCTORS SHALL BE RW90 STRANDED ALUMINUM (UNLESS OTHERWISE NOTED). SPORTS LIGHTING CONDUCTORS SHALL RUN CONTINUOUS WITH NO SPLICES.
3. CONTRACTOR SHALL GAIN APPROVAL FROM SPORTS LIGHTING SUPPLIER'S GEOTECHNICAL ENGINEER PRIOR TO FOUNDATION INSTALLATION. BACK FILL SHALL MEET THE APPROVAL OF THE GEOTECHNICAL ENGINEER.
4. BC HYDRO DB2 CONDUITS SHALL BE MIN. 900mm DEEP. ALL OTHER CONDUITS SHALL BE BURIED A MIN. 600mm DEEP. A BURIED CABLE MARKER TAPE SHALL BE INSTALLED IN ALL TRENCHES.
5. CONTRACTOR SHALL OBTAIN ALL PERMITS AND LICENSES PRIOR TO CONSTRUCTION.
6. CONTRACTOR SHALL LOCATE AND AVOID ALL UNDERGROUND SERVICES.
7. THE CONTRACTOR SHALL REMOVE ALL ASPHALT, CONCRETE SIDEWALK PANELS, CURB & GUTTER, LANDSCAPE, ETC. REPLACED OR DAMAGED DURING CONSTRUCTION TO THE SATISFACTION OF THE OWNER.
8. CONDUITS SHALL BE RIGID P.V.C. MANUFACTURED IN ACCORDANCE WITH C.S.A. C22.2 No. 211.2. (NOT DB2, UNLESS OTHERWISE NOTED)
9. ALL EQUIPMENT SHALL BE BONDED IN COMPLIANCE WITH THE CANADIAN ELECTRICAL CODE.
10. CONTRACTOR SHALL COORDINATE WITH BC HYDRO CIVIL INSPECTOR TO REVIEW AND SIGN OFF ON CONDUITS FOR SERVICE.
11. CONTRACTOR SHALL ENSURE ALL LOADS ARE BALANCED
12. SEE B.C. HYDRO REGULATIONS FOR SERVICE CONNECTION DETAILS.
13. A TRON HEB SERIES WATER-RESISTANT FUSE HOLDER C/W A 10A BUSS KTK 10 FUSE AND 2 INSULATING BOOTS SHALL BE INSTALLED IN EACH SECURITY LIGHTING LUMINAIRE LIVE CONDUCTOR, IN THE HANDHOLE OF EACH SECURITY LIGHTING POLE.
14. JUNCTION BOX LOCATIONS ARE DIAGRAMMATIC ONLY. LOCATIONS MAY BE ADJUSTED TO SUIT FIELD CONDITIONS IN CONSULTATION WITH DMD. ALL JUNCTION BOXES SHALL BE INSTALLED IN BOULEVARD UNLESS NOTED. ALL CHANGES SHALL BE RECORDED ON AS-BUILTS.
15. ALL CIRCUIT BREAKERS SHALL HAVE A MINIMUM TEMPERATURE RATING OF 75° CELSIUS.
16. ALL EMPTY CONDUITS SHALL HAVE PULL STRINGS INSTALLED & CAPPED AT EACH END. PULL STRINGS TO EXTEND MINIMUM 1.0m ABOVE JUNCTION BOX & BE TIED-OFF TO SUPPORT BAR (REFER TO MCMCD FOR PULL STRING DETAILS).
17. ALL WIRING SHALL CONFORM TO C.E.C. REQUIREMENTS.
18. ALL EQUIPMENT AND MATERIALS SHALL BE C.S.A. APPROVED.
19. LEAVE MINIMUM 1 SPARE CONDUIT IN EACH CONDUIT RUN BETWEEN JUNCTION BOXES.
20. SPLICES IN JUNCTION BOXES SHALL USE SPLIT BOLT STYLE CONNECTORS THEN COMPLETELY COVER SPLICE WITH TAPE THEN DUCT SEAL TO FORM A BALL OVER CONNECTION. DUCT SEAL TO BE THICK ENOUGH TO PREVENT SHARP ENDS OF CONDUCTORS AND/OR POINTS OF CONNECTOR FROM PROTRUDING THROUGH TAPED CONNECTION. ONCE DUCT SEAL HAS BEEN APPLIED, TAPE SPLICE WITH SELF-HOLDING AND PVC TAPE.
21. ALL SECURITY LUMINAIRES AND PARKING LOT LUMINAIRES SHALL BE PROVIDED WITH LAMP WATTAGE LABELS (BLACK LETTERING ON WHITE BACKGROUND) TO NEMA STANDARDS.



LOCATION MAP
1:1500



ENLARGEMENT
1:100

CONTRACTOR IS RESPONSIBLE FOR COMMISSIONING SPORTS LIGHTING SYSTEM INCLUDING REAIMING FIXTURES AS REQUIRED. THE CONTRACTOR SHALL RETAIN DMD & ASSOCIATES FOR ANY ADDITIONAL LIGHTING MEASUREMENTS AS A RESULT OF REAIMING.

BE EXTRA CAUTIOUS WHEN TRENCHING NEAR TREE BALL AND ROOTS (TYP.). IT IS RECOMMENDED THAT THE PROJECT ARBORIST BE CONTACTED TO REVIEW IMPACTS BEFORE WORKING AROUND TREES. HYDRO VAC ONLY WITHIN THE TREE DRIP LINE, UNDER THE SUPERVISION OF THE PROJECT ARBORIST.

ALL FIELD WIRING SHALL BE ALUMINUM CABLE (UNLESS OTHERWISE SPECIFIED)

DISTRIBUTION VOLTAGE IS 120/240V

PERMIT TO PRACTICE NUMBER: 1000771
ENGINEERS AND GEOSCIENTISTS BRITISH COLUMBIA

NOT FOR CONSTRUCTION
2022-10-07

HOLD POINT: CONTACT STRUCTURAL ENGINEER TO REVIEW SOIL AT PROPOSED POLE LOCATIONS TO CONFIRM DESIGN PARAMETERS OF FOUNDATION DESIGN BEFORE BACKFILL. PROVIDE STRUCTURAL SCHEDULES B & CB

CONDUIT ROUTING AND PULL BOX LOCATIONS SHOWN FOR DIAGRAMMATIC PURPOSE ONLY. LOCATE BOXES TO MINIMIZE CONDUIT BENDS.

REFER TO SINGLE LINE DIAGRAM FOR SPORTS LIGHTING WIRING DETAILS. LEAVE AT LEAST ONE EMPTY CONDUIT FOR EACH RUN. NO MORE THAN 20 CURRENT CARRYING CONDUCTORS IN ONE CONDUIT

ALL EQUIPMENT IS NEW EXCEPT WHERE NOTED

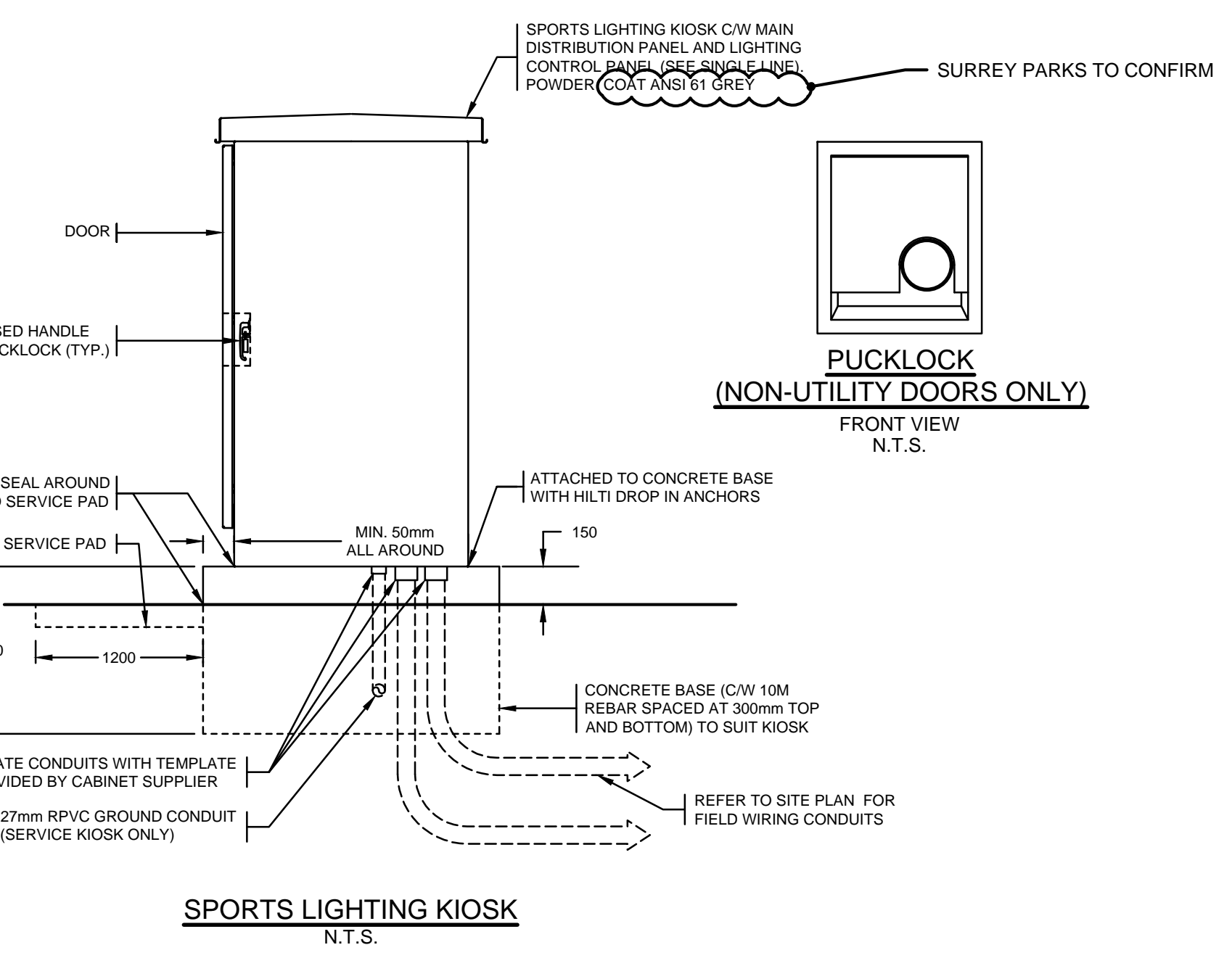
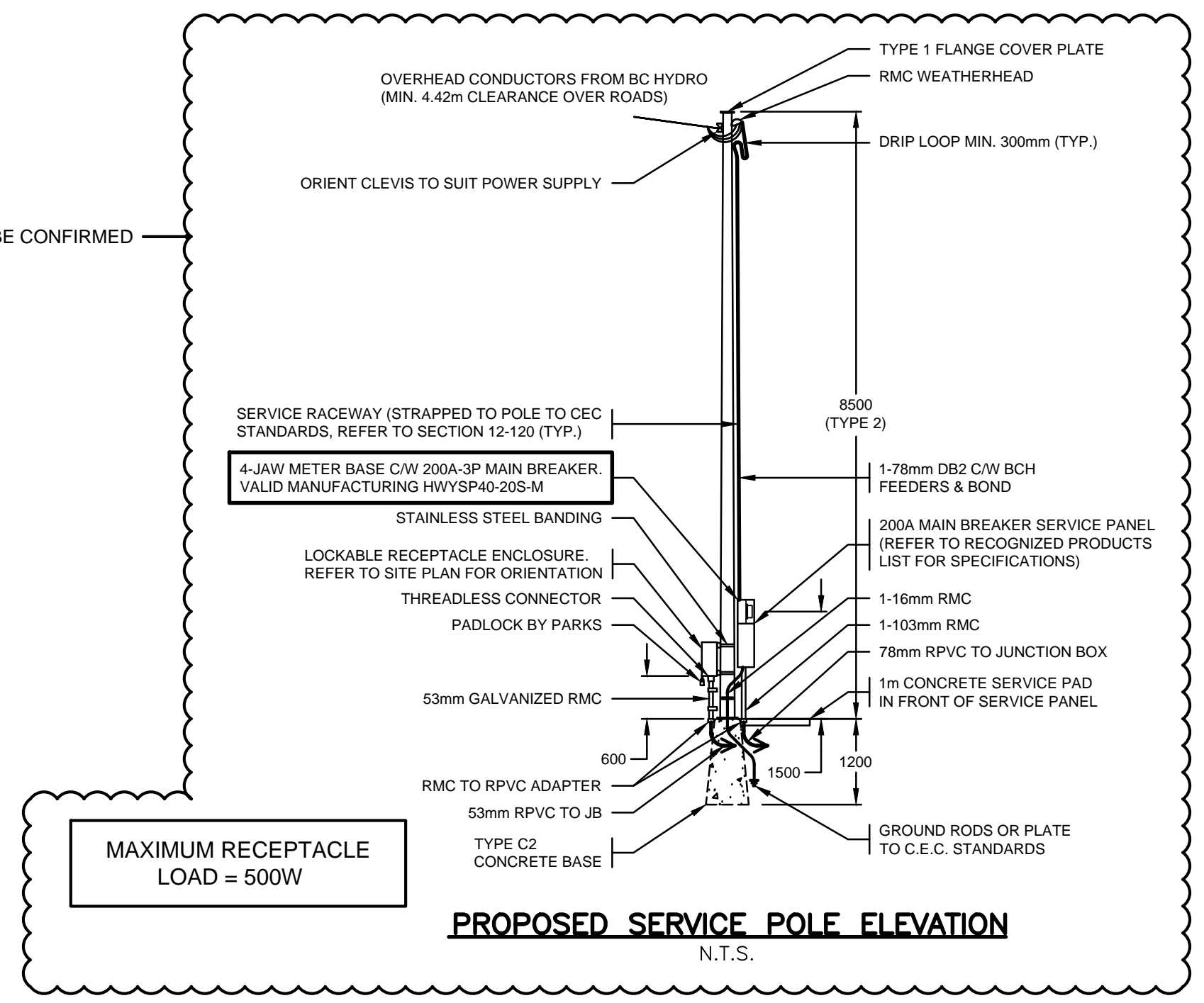
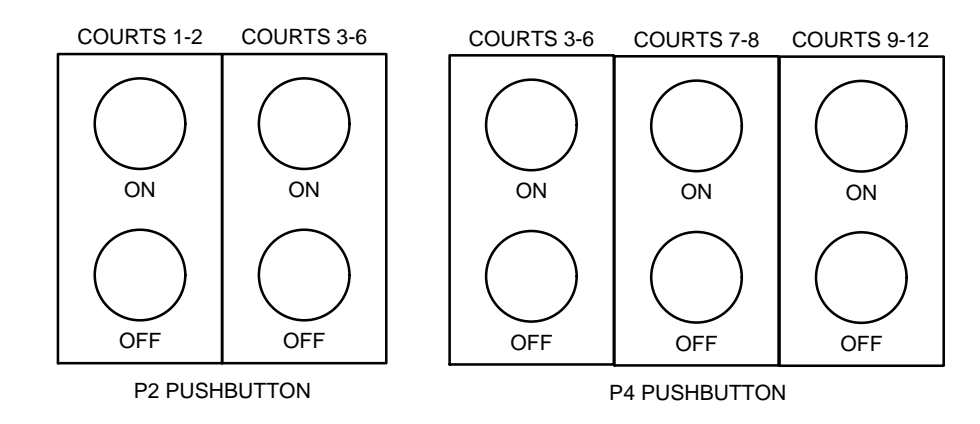
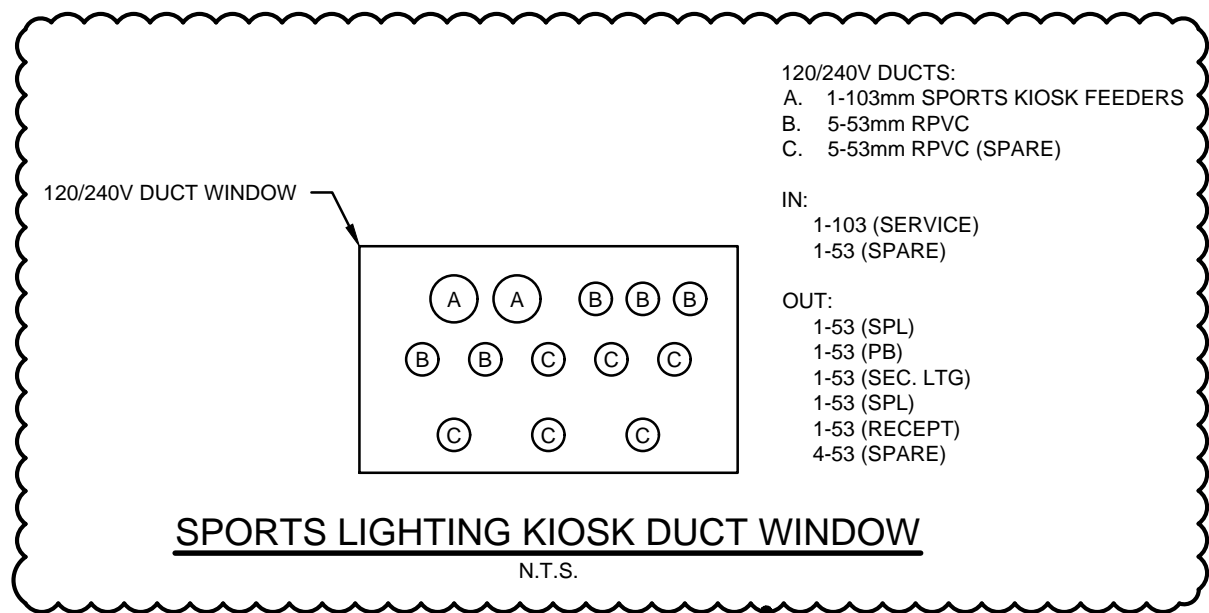
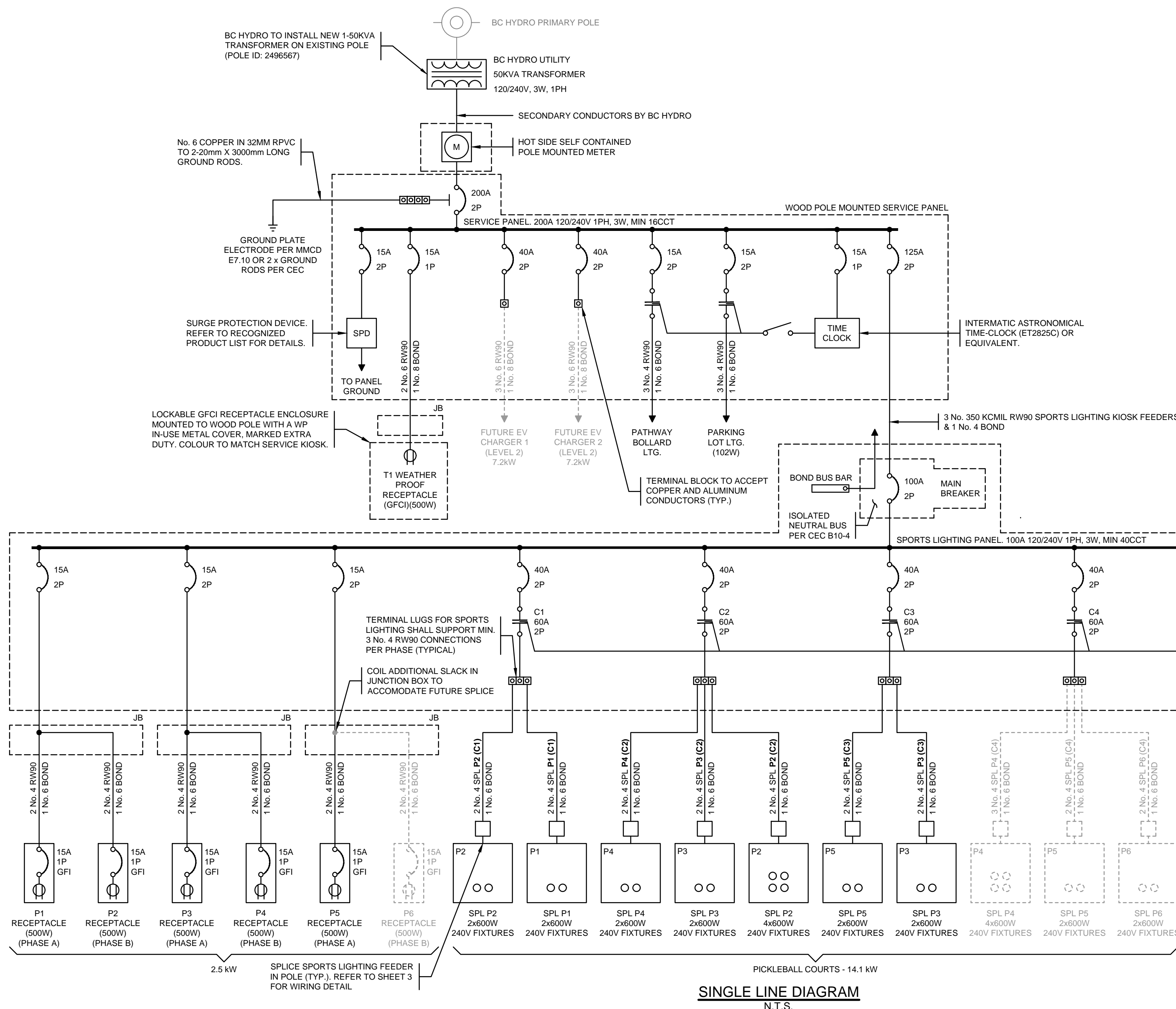
ALL INFORMATION RELATING TO BC HYDRO WORK IS FOR BID PURPOSES ONLY. ALL CONSTRUCTION SHALL BE DONE AS PER BC HYDRO CONSTRUCTION DRAWINGS

CHECK BEFORE YOU DIG
CONTRACTOR SHALL REFER TO MUNICIPAL RECORD / CIVIL DESIGN DRAWINGS FOR ALL OTHER UTILITIES, SERVICE LOCATIONS, AND DETAILS. THE EXACT LOCATION OF THESE UTILITIES SHALL BE DETERMINED ON SITE BY THE CONTRACTOR. CONTRACTOR TO REPORT ANY CONFLICTS OR DISCREPANCIES TO DMD & ASSOCIATES PRIOR TO ORDERING BASES.

LOCATING EQUIPMENT
FOR CLARITY CONDUITS, JUNCTION BOXES AND STREETLIGHT POLES MAY NOT BE SHOWN AT DESIGN OFFSETS. CONTRACTOR SHALL LOCATE ALL EQUIPMENT BASED ON STATIONS AND/OR OFFSETS AS NOTED AND SHALL NOT RELY ON COORDINATES OBTAINED FROM DMD DIGITAL DRAWINGS. CONTRACTOR TO REPORT ANY CONFLICTS OR DISCREPANCIES TO DMD & ASSOCIATES PRIOR TO ORDERING EQUIPMENT.

No.	DATE	BY	CHKD	REVISION
1	2022-05-27	JP	AL	90% SUBMISSION
2	2022-10-07	JP	AL	100% SUBMISSION - UPDATED OVERHEAD SERVICE, SPORTS POLE & CONDUIT

City of Surrey Parks Planning, Research and Design 13450 104 Avenue, Surrey, BC V3T 1V8		
SPORTSFIELD LIGHTING CRESCENT PARK PICKLEBALL COURTS SURREY, BC		
PROJECT No.	SHEET No.	REVISION
7579-22-01 of 03	1 of 3	2



- ELECTRICAL KIOSK NOTES:**
- ALL SPORTS FIELD LTG. CONDUCTORS SHALL RUN CONTINUOUS WITH NO SPLICES (UNLESS OTHERWISE NOTED).
 - INSTALL A BOND IN EACH BRANCH CIRCUIT CONDUIT TO CEC REQUIREMENTS.
 - ALL TERMINAL BLOCKS SHALL BE LABELED WITH CIRCUITS AND POLE NUMBER.
 - CONTRACTOR SHALL ARRANGE FOR SUPPLIER TO COMMISSION, TEST & SET UP LIGHTING CONTROL SYSTEM.
 - CONTRACTOR SHALL SUPPLY DMD & ASSOCIATES ELECTRICAL CONSULTANTS LTD. KIOSK SHOP DRAWINGS FOR REVIEW PRIOR TO MANUFACTURING.
 - CONTRACTOR SHALL SUPPLY KIOSK SHOP DRAWINGS FOR APPROVAL PRIOR TO MANUFACTURING.
 - KIOSK SHALL BE SECURED TO CONCRETE BASE WITH A MINIMUM OF 6 CONCRETE INSERTS.
 - CONCRETE SHALL HAVE A STRENGTH OF 25Mpa AT 28 DAYS.
 - LOCATE CONDUITS IN CONCRETE BASE TO SUIT KIOSK EQUIPMENT.
 - KIOSK SHALL MEET THE APPROVAL OF THE PROVINCIAL ELECTRICAL INSPECTOR SHALL BARE A PROVINCIAL INSPECTION STICKER.
 - SERVICE PANEL SHALL HAVE LAMICOID NAME PLATES INDICATING VOLTAGES & LABELING ALL EQUIPMENT.
 - KIOSK SHALL HAVE LAMICOID NAME PLATES INDICATING VOLTAGES & LABELING ALL EQUIPMENT. NORMAL POWER NAME PLATES SHALL BE WHITE LETTERS ON BLACK AND EMERGENCY POWER NAME PLATES SHALL BE WHITE LETTERING ON RED (WHERE APPLICABLE).
 - ALL BREAKERS SHALL BE RATED AT A MINIMUM OF 10,000 AIC.
 - CONTACTORS AND SWITCHES MUST BE APPROVED FOR CONTROL OF LED LIGHTING.
 - RUBBER GASKET SHALL BE INSTALLED BETWEEN KIOSK AND CONCRETE BASE.
 - KIOSK SHALL BE HEATED.
 - KIOSK SHALL HAVE A CIRCULATION FAN AND VENTING WITH A PLEATED AIR FILTER.
 - RECOGNIZED KIOSK SUPPLIERS: VALID MANUFACTURING LTD. CONTACT CHRIS SLADE 1-250-832-6477. ChrisS@validmfg.com
 - ALL KIOSK/PANEL WIRING SHALL BE STRANDED COPPER CONDUCTORS.
 - PROVIDE JUNCTION BOX SECURITY BIT(S) IN A ZIP LOCK BAG LOCATED INSIDE KIOSK.
 - SERVICE KIOSK SHALL CONFORM TO LATEST REVISIONS OF BC HYDRO ES54 S1-01.08 (120/240V) AND ES54 S2-01.04 (120/208V & 347/600V) AND SECONDARY REVENUE METERING GUIDE.

ALL SHADED ITEMS ARE EXISTING. SCOPE OF WORK INCLUDES DARK ITEMS UNLESS OTHERWISE NOTED AS NOT IN CONTRACT.

LIGHTING CONTROLS			
ZONE		POLES	CONTACTOR
Z1	PICKLEBALL COURTS 1 & 2	P1, P2	C1
Z2	PICKLEBALL COURTS 3 - 6	P2, P3, P4	C2
Z3	PICKLEBALL COURTS 7 & 8	P3, P5	C3
Z4	FUTURE PICKLEBALL COURTS	P4, P5, P6	C4
Z5	SPARE	P7	C5
Z6	SECURITY LIGHTING	P2, P4	C6

TOTAL PROPOSED CONNECTED LOAD = 9.5KW

TOTAL PROPOSED LOAD = 14.1KW

ALL BREAKERS AND PANELS SHALL BE RATED FOR 10KA INTERRUPTING CURRENT (SERIES RATED EQUIPMENT ALLOWED)

PERMIT TO PRACTICE NUMBER: 1000771
ENGINEERS AND GEOSCIENTISTS BRITISH COLUMBIA

NOT FOR CONSTRUCTION
2022-10-07

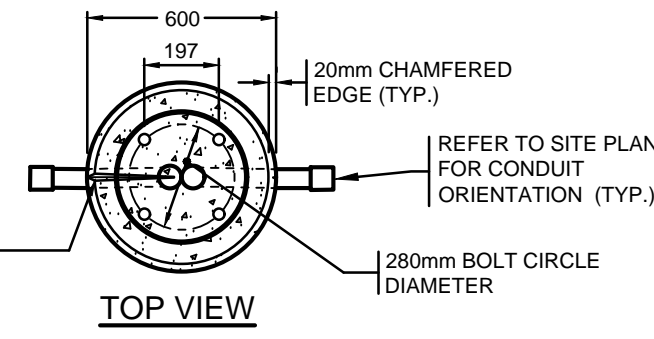
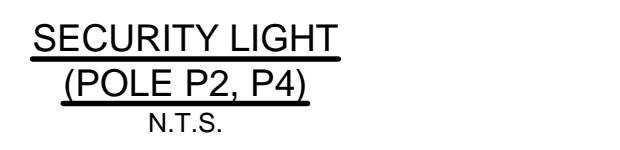
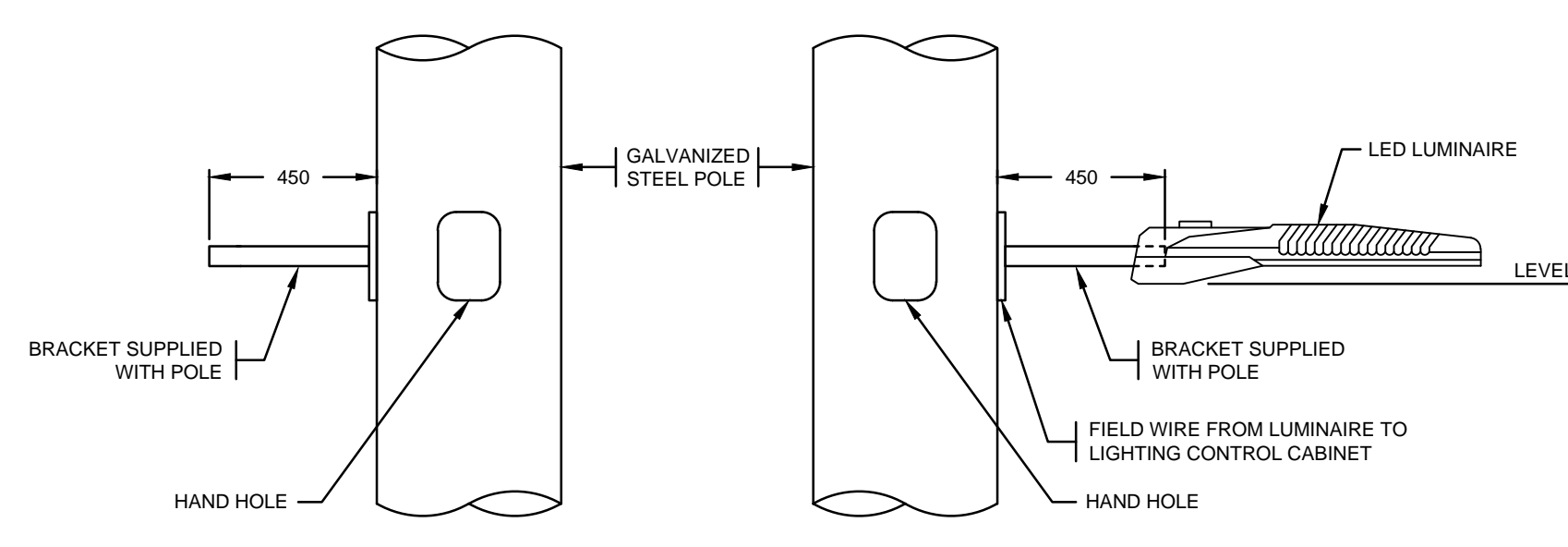
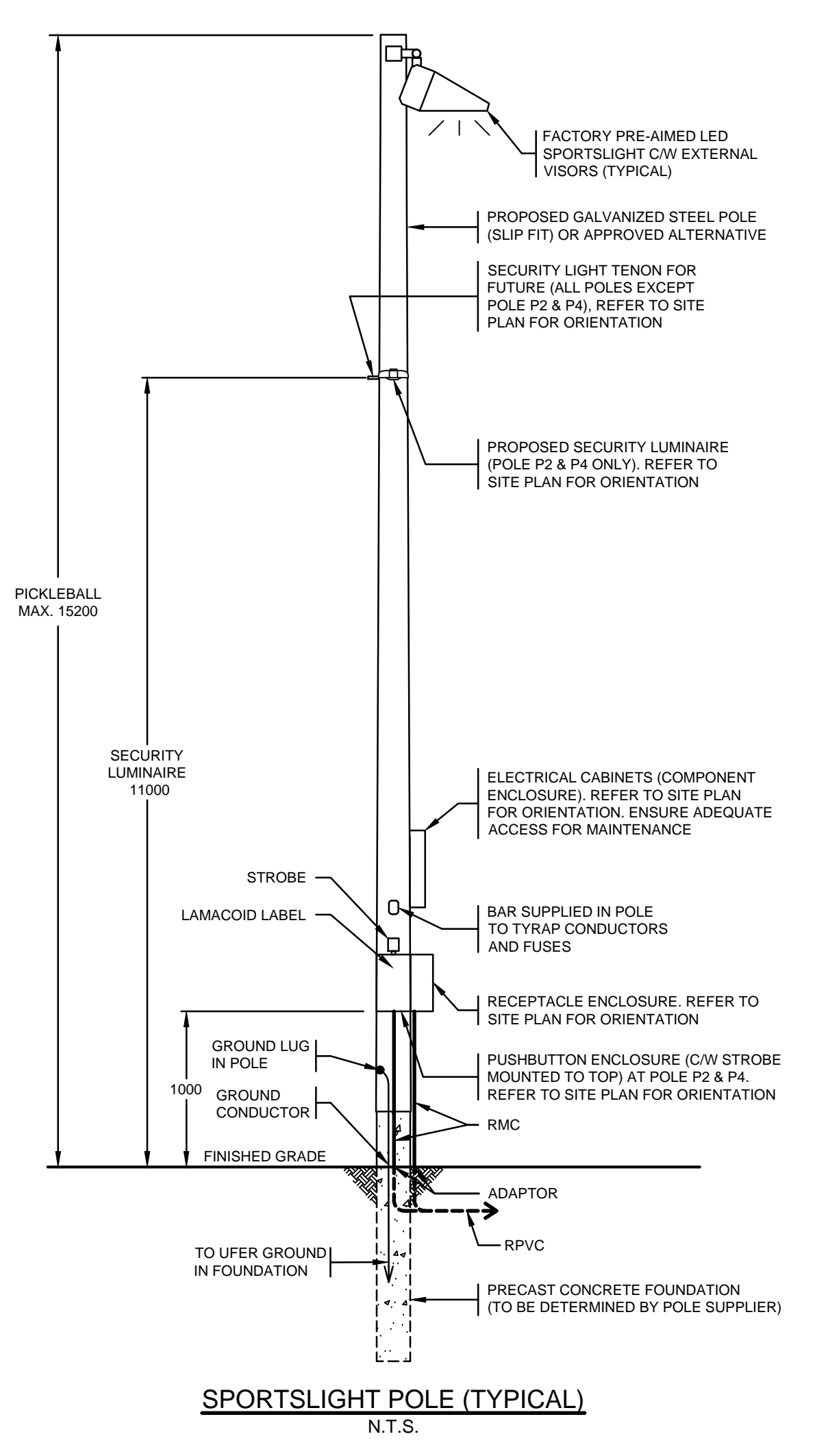
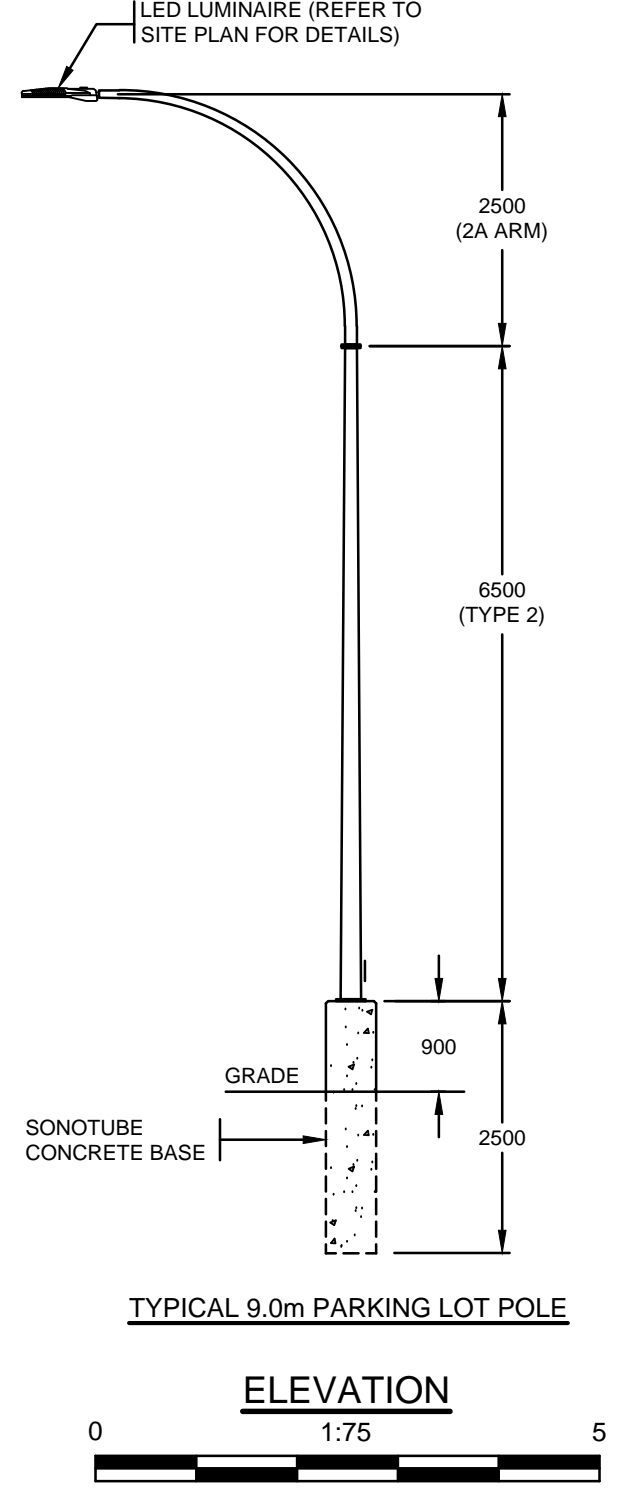
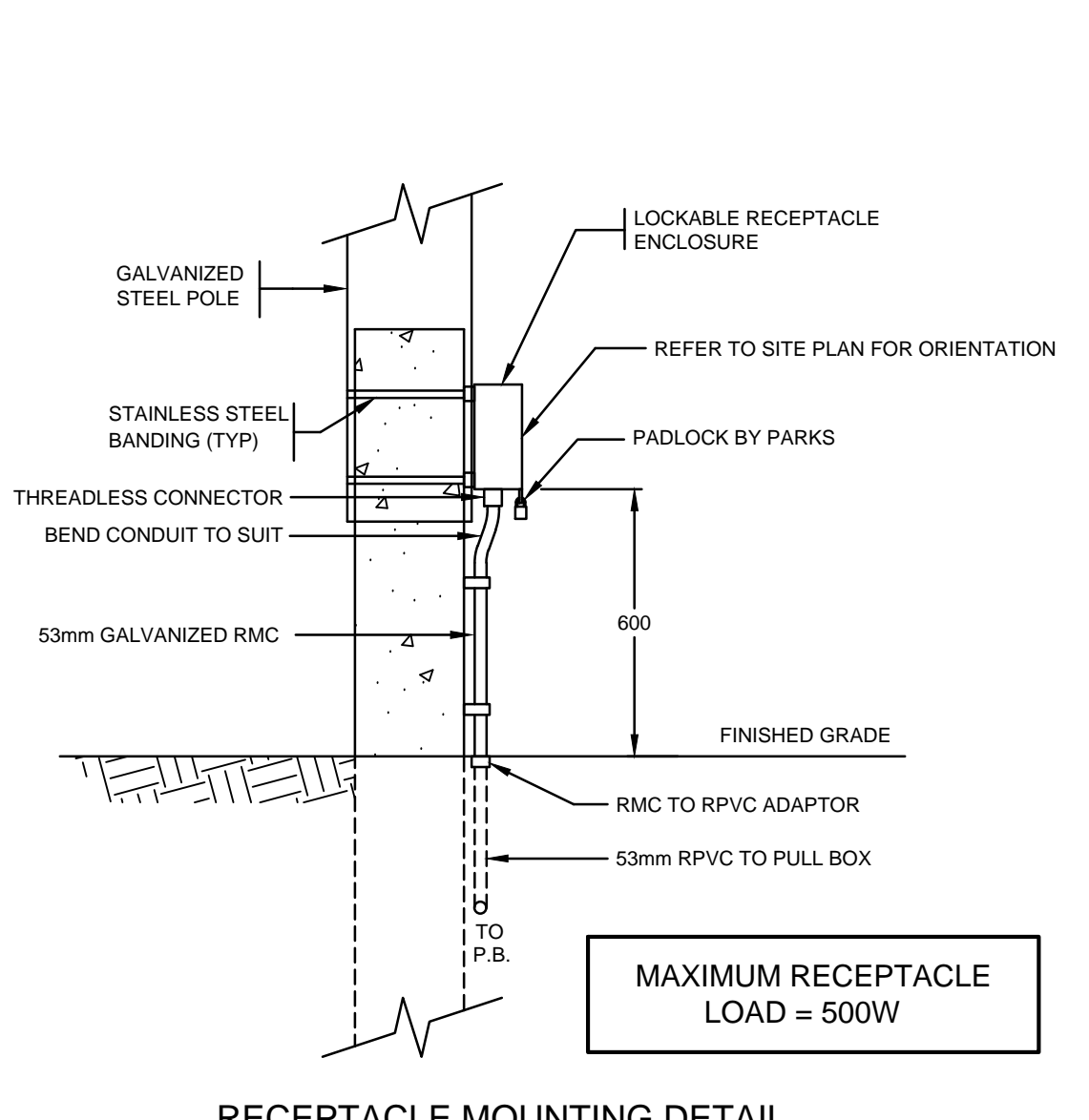
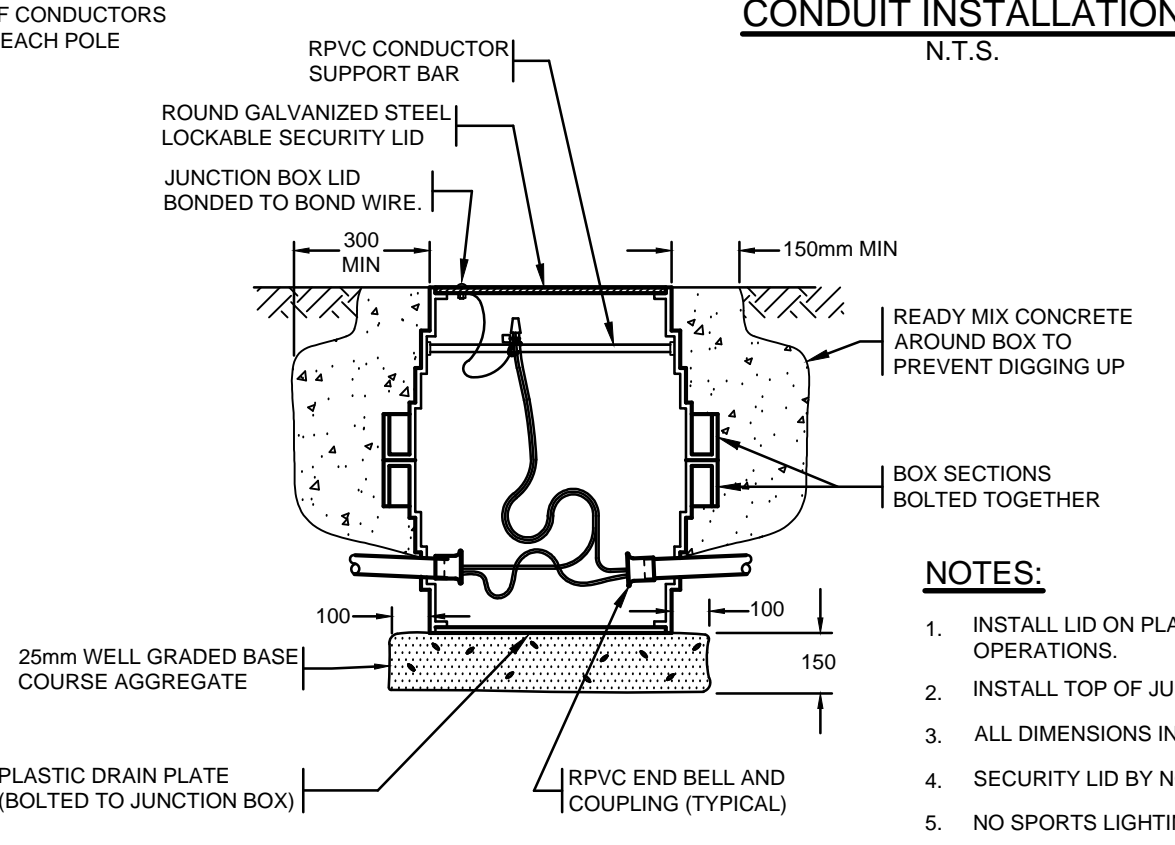
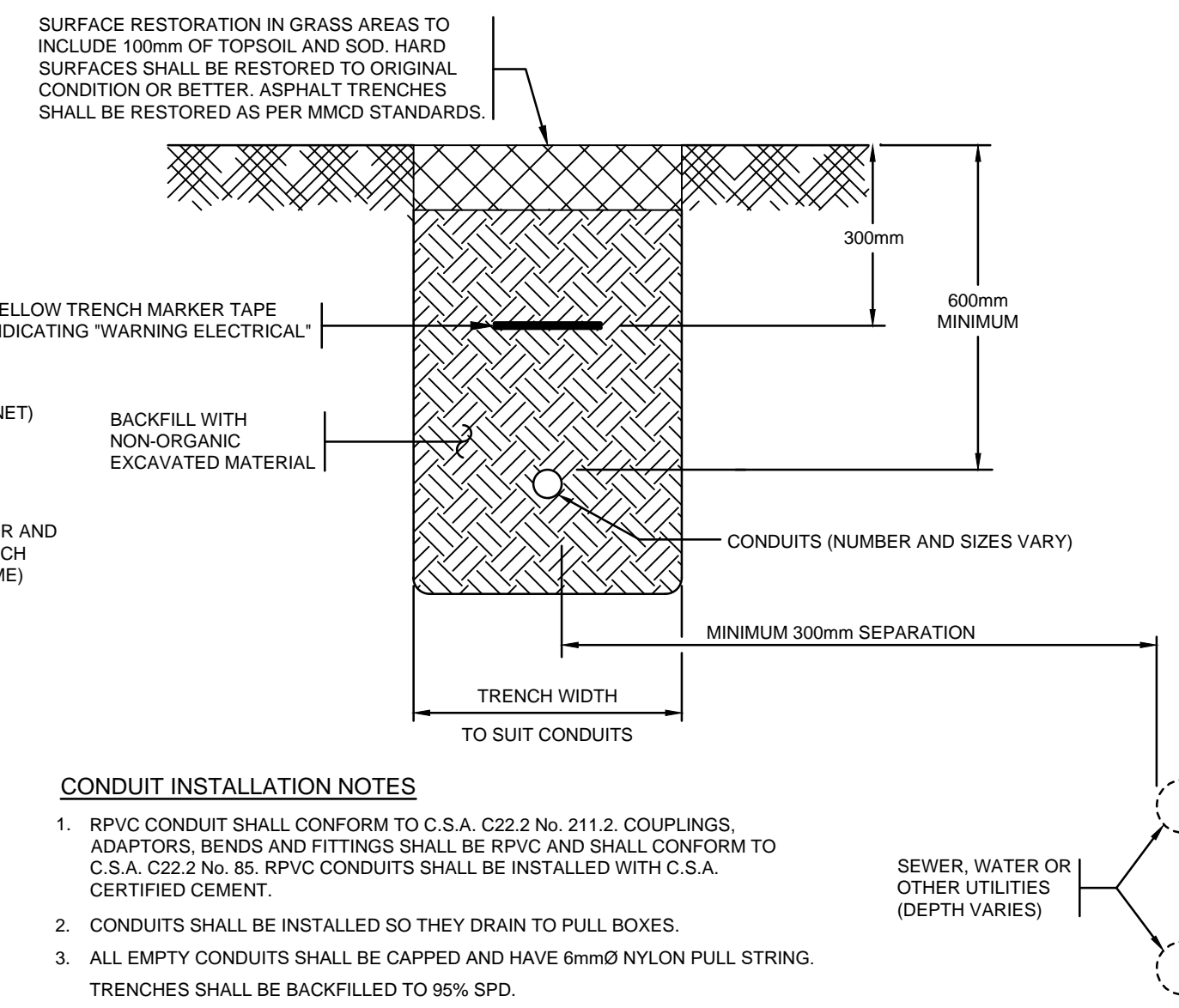
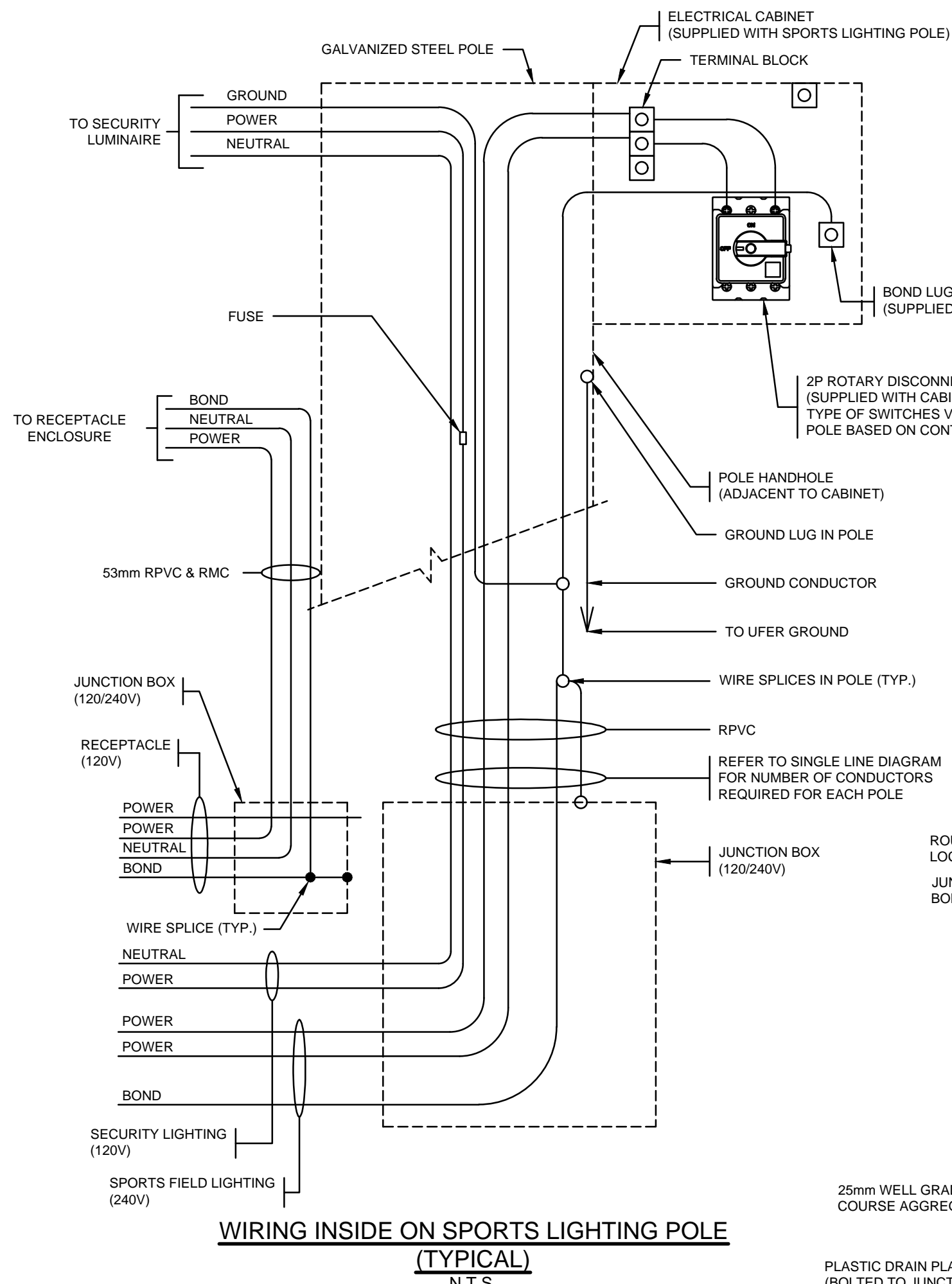
No.	DATE	BY	CHKD	REVISION
1	2022-05-27	JP	AL	90% SUBMISSION
2	2022-10-07	JP	AL	100% SUBMISSION - UPDATED OVERHEAD SERVICE, SPORTS POLE & CONDUIT

City of Surrey Parks Planning, Research and Design 13450 104 Avenue, Surrey, BC V3T 1V8		
SPORTSFIELD LIGHTING CRESCENT PARK PICKLEBALL COURTS SURREY, BC		
PROJECT No.	SHEET No.	REVISION
7579-22-02 of 03	2 of 3	2

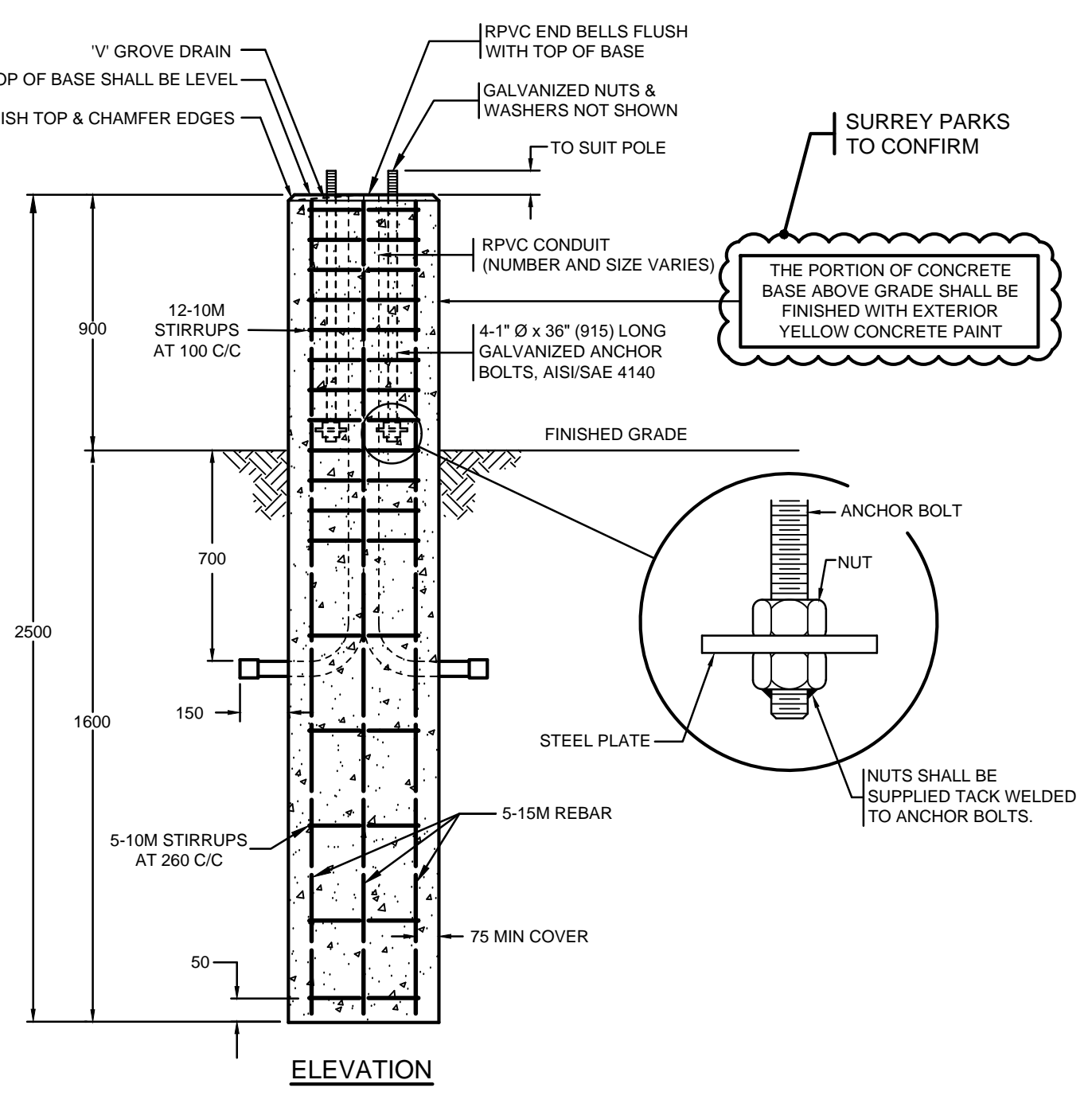
DMD
DMD & Associates
Electrical Consultants Ltd.
#12-17358 104A Avenue
Surrey, BC, Canada V4N 5M3
www.dmdeng.com 604-589-9010
office@dmdeng.com Fax 604-589-9012

DESIGNED	JWAL PRAJAPATI
DRAWN	CRYSTA ANDREWS
CHECKED	MARTIN STERLING
E.O.R.	AUBURN LEUNG
DATE	APRIL 29, 2022
SCALE:	N.T.S.

SEAL



V GROOVE DRAIN TO START AT ZERO DEPTH AND WIDTH IN THE CENTRE OF THE BASE AND EXTEND TO A 10mm DEPTH AND WIDTH AT THE OUTSIDE EDGE



- NOTES (APPLY TO BOTH FOUNDATIONS)**
- ALL HARDWARE SHALL BE GALVANIZED IN ACCORDANCE WITH CAN/CSA G14-M92
 - APPLY LUBRICATE OR OTHER SUITABLE GREASE TO EXPOSED PORTION OF ANCHOR BOLTS AND NUTS PRIOR TO POLE INSTALLATION
 - CONCRETE TO HAVE A MINIMUM STRENGTH OF 30MPa AT 28 DAYS.
 - FOUNDATION DESIGNS BASED ON STRUCTURE BASE REACTIONS AS SHOWN.
 - FOOTINGS ARE DESIGNED FOR SOILS WITH A MINIMUM ALLOWABLE BEARING PRESSURE OF 125kPa. AFTER EXCAVATION DESIGN ENGINEER SHALL CONFIRM SOIL AND EXCAVATION PRIOR TO CONSTRUCTION OF BASE.
 - ALL DIMENSIONS ARE IN MILLIMETERS UNLESS OTHERWISE NOTED.
 - ALL WORK SHALL BE CONSTRUCTED IN ACCORDANCE WITH THE MINISTRY STANDARD SPECIFICATIONS FOR HIGHWAY CONSTRUCTION (2012 ISSUE) UNLESS OTHERWISE NOTED ON THESE DRAWINGS OR IN THE SPECIAL PROVISIONS.
 - BACKFILL SHALL BE S.G.S.B. IN ACCORDANCE WITH SECTION 202 OF BC MOTI STANDARD SPECIFICATIONS FOR HIGHWAY CONSTRUCTION. BACKFILL SHALL BE PLACED AND COMPACTED IN LAYERS NO MORE THAN 150mm THICK TO 100% STANDARD PROCTOR MAXIMUM DENSITY (ASTM D-698).
 - THE PREPARED FOUNDATION SUBGRADE SHALL BE INSPECTED BY THE DESIGN ENGINEER AND APPROVED PRIOR TO COMMENCING FOUNDATION CONSTRUCTION.
 - CONTRACTOR SHALL PROVIDE ALL MEANS NECESSARY TO ENSURE THAT EXCAVATIONS SHALL REMAIN DRY DURING CONSTRUCTION.
 - ALL EXPOSED EDGES SHALL BE CHAMFERED 20 x 20 U.N.O.
 - CONFIRM ANCHOR BOLTS AND THEIR PLAN ORIENTATION PRIOR TO SETTING IN CONCRETE FORMS.

RECOGNIZED PRODUCT LIST			
PRODUCT	MANUFACTURER	SPECIFICATION	EXCEPTIONS
SPORTS LIGHTING SYSTEM	REFER TO SPECIFICATIONS	POLES, LUMINAIRES, FOUNDATIONS, & LIGHTING CONTROL SYSTEM.	FOUNDATION SHALL BE SIGNED AND SEALED BY THE SUPPLIER'S STRUCTURAL ENGINEER. WARRANTY SHALL BE 25 YEARS
CONDUIT	IPEX	CSA C22-211.2	
PICKLEBALL SPORTS LIGHTING KIOSK	VALID MANUFACTURING (1-250-832-6477)	SEE SUPPLEMENTARY SPECIFICATIONS	POWDER COATED ANSI 61 GREY
RECEPTACLE ENCLOSURE	VALID MANUFACTURING (1-250-832-6477)	RWA 12015	LOCKABLE, GFCI, 15A, IN USE "EXTRA DUTY" COVER. POWDER COATED ANSI 61 GREY
SECURITY LUMINAIRE	AMERICAN ELECTRIC LIGHTING	ATB0-P201-MVOLT-R4-HSS-NL-P7-SH	C/W SHORTING CAPS
PUSHBUTTON ENCLOSURE	VALID MANUFACTURING OR APPROVED ALTERNATIVE	ENCLOSURE C/W WEATHER PROOF IN-USE COVER	PUSHBUTTON SUPPLIED BY MUSCO. COLOUR TO MATCH KIOSK.
SPD	MERSEN OR EQUIVALENT	MIN. 40KA; MIN. 10KA SCCR	
PARKING LOT LUMINAIRE	AMERICAN ELECTRIC LIGHTING	ATB0-P201-MVOLT-R4-HSS-NL-P7-SH	
BOLLARD LIGHTING	FC LIGHTING	FION-18LED-2711-3000K-UNV-ABT-CAL-xxxx-TP-TS-BL-SP2	POWDER COATED GLOSS BLACK RAL 9005
TYPE 10 JUNCTION BOX	AE CONCRETE, FRASERWAY PRECAST (OR APPROVED EQUIVALENT)	MMCD SPEC	PROVIDE SECURITY BIT IN ZIP LOCK BAG WITH LABEL AND TAPE TO INSIDE OF KIOSK. LID MARKED "ELEC" OR "COMM" AS REQUIRED
TYPE 66 JUNCTION BOX	AE CONCRETE, FRASERWAY PRECAST (OR APPROVED EQUIVALENT)	MMCD SPEC	GALVANIZED CHECKERPLATE LID C/W RECESSED PADLOCK AND BOLTDOWN HOLE TO UTILIZE SECURITY BOLT. PROVIDE SECURITY BIT IN ZIP LOCK BAG AND TAPE INSIDE OF KIOSK. LID MARKED "ELEC"
TYPE 5686 JUNCTION BOX	AE CONCRETE, FRASERWAY PRECAST (OR APPROVED EQUIVALENT)	MMCD SPEC	GALVANIZED CHECKERPLATE LID C/W RECESSED PADLOCK AND BOLTDOWN HOLE TO UTILIZE SECURITY BOLT. PROVIDE SECURITY BIT IN ZIP LOCK BAG AND TAPE INSIDE OF KIOSK. LID MARKED "ELEC"
PARKING LOT POLE	NOVAPOLE	MMCD SPEC	9.0m OCTAGONAL STREETLIGHT POLE GALVANIZED AND POWDER COATED (ANSI-61)
CUSTOM SERVICE PANEL	VALID MANUFACTURING (1-250-832-6477)	HWYSP40-QS-M	WEATHERPROOF ENCLOSURE C/W 1-100mm WEATHERPROOF KNOCKOUTS FOR CONDUITS (REFER TO ELEVATION FOR NUMBER AND SIZE OF CONDUIT KNOCKOUTS)
STEEL SERVICE POLE	N/A	MMCD SPEC	8.5m TYPE 2 GALVANIZED STEEL POLE MOUNTED TO A TYPE C2 CONCRETE BASE. POLE POWDER COATED ANSI 61 GREY

SURREY PARKS TO CONFIRM COLOR AND FINISH

SURREY PARKS TO CONFIRM FIXTURE COLOUR GREY IS ACCEPTABLE

SURREY PARKS TO CONFIRM BOLLARD COLOR

SURREY PARKS TO CONFIRM POLE COLOUR GREY (ANSI-61) IS ACCEPTABLE

SURREY PARKS TO CONFIRM POLE COLOUR GREY (ANSI-61) IS ACCEPTABLE

DMD
DMD & Associates
Electrical Consultants Ltd.
#12-17358 104A Avenue
Surrey, BC, Canada V4N 5M3
604-589-9010
office@dmdeng.com Fax 604-589-9012

DESIGNED	JWAL PRAJAPATI
DRAWN	CRYSTA ANDREWS
CHECKED	MARTIN STERLING
E.O.R.	AUBURN LEUNG
DATE	APRIL 29, 2022
SCALE:	AS NOTED
SEAL	

PERMIT TO PRACTICE
NUMBER: 1000771
ENGINEERS AND GEOSCIENTISTS BRITISH COLUMBIA

NOT FOR CONSTRUCTION
2022-10-07

No.	DATE	BY	CHKD	REVISION
1	2022-05-27	JP	AL	90% SUBMISSION
2	2022-10-07	JP	AL	100% SUBMISSION - UPDATED OVERHEAD SERVICE, SPORTS POLE & CONDUIT

City of Surrey Parks Planning, Research and Design
13450 104 Avenue, Surrey, BC V3T 1V8

**SPORTSFIELD LIGHTING
CRESCENT PARK
PICKLEBALL COURTS
SURREY, BC**

PROJECT No. 7579-22-03 of 03 SHEET No. 3 of 3 REVISION 2

CANCEL PRINTS BEARING PREVIOUS LETTER